

TULANE vs. ALABAMA

SEPTEMBER 27, 1947

Souvenir Program

Twenty-Five Cents

Kick-off

for

Enjoyment



Listen
to

"TIME OUT"
with

JOHNNY LYNCH

WSMB FRIDAYS
9:45-10:00 P.M.

DRINK

JAX



JACKSON BREWING CO.,
NEW ORLEANS, LA.

86

A GREAT NAME IN BEER

The Roosevelt

The Roosevelt Hotel Offers
New Orleans' Most Diversified Program
of
Music and Entertainment

in the FOUNTAIN LOUNGE

At LUNCHEON we invite you to listen to the sweet strains of the Gypsy Ensemble. For COCKTAILS and DANCING, alternating nightly from five o'clock until two the next morning is one of Latin America's noted Rhumba bands and the Society Music of one of America's outstanding combinations.

in the BLUE ROOM

Each evening, for DINNER and SUPPER DANCING, is presented one of the Nation's famous orchestras . . . Featured also in the Blue Room Floor Shows at Dinner and Supper, are celebrated stars from radio, stage and screen.

*New Orleans' most discriminating audiences choose The Roosevelt
for their relaxation and entertainment*

The Roosevelt
"The Pride of the South"

PONTCHARTRAIN PATIO



BAYOU BAR

☆ FINE DRINKS —
DISTINCTIVE ATMOSPHERE



Pontchartrain Hotel

2031 ST. CHARLES AVE.

*Cheered by
Millions!*

*You like it...
it likes you!*



THE GREENIE



Vol. 17

SEPTEMBER 27, 1947

No. 1

Official Souvenir Football Program of Tulane University, Published for Each Home Game

National Advertising Representative, Football Publications, 370 Lexington, New York N. Y.

ANDY ROGERS, Co-Editor

CAROL HART, Co-Editor

THE SEASON AHEAD

Once more it's pigskin time—the time when football stadia throughout the nation become swirling masses of humanity, when suddenly the soft turf becomes alive with the thunder of dashing heels and the smack of player against player.

From now through the first week in December the gridiron game will pick up in enthusiasm until it reaches its fever pitch when regional, sectional, and national champions are crowned.

Here in Tulane Stadium this bustle of activity will come into the open in one gigantic splash today when the Tulane Green Wave meets the Crimson Tide of Alabama.

It's the first home showing in a seven-reel continual series which pits the Green Wave each Saturday against one of the nation's major grid powers and provides two additional "foreign" previews for intersectional contests.

The Crimson Tide, with all the color of a circus side-show, starts off the Tulane pigskin parade. With Coach Harold "Red" Drew, in his first season as head man of the Tide, comes an experienced team from the red hills of 'Bamaland, which like the U. S. Navy, has made a good start at seeing the world. This fourth-year team first won acclaim here in the 1945 Sugar Bowl,

then travelled to the Far West for a Rose Bowl visitation, and now in its last year of activity has its sights set on acquiring new laurels for its alma mater.

The venerable Harry Gilmer, master of the forward pass, leads the Tidemen today against the Green Wave. His supporting cast includes such "old-timers" as All-American Vaughn Mancha, Lowell Tew, Norwood Hodges, John Wozniak, Hugh Morrow, Tom Whitley and others who played New Year's Day, 1945, in Tulane Stadium.

For Coach Henry Frnka, today's tussle will mark the start of his second season at the helm of the Green Wave. He'll plot a cautious course through the perilous channels that send his Wave rushing against such foes as the Tide, Georgia Tech, Rice, Ole Miss, Auburn, Mississippi State, Florida, Notre Dame and Louisiana State University.

Today's encounter marks the coming of age of the Tulane-Alabama rivalry which dates back to 1894, for the 21st battle is to be fought between the Wave and the Tide. The Tulane series rates as the oldest on the Alabama slate this fall. Since it began, the Crimson Tide have managed 15 victories to four for the Greenies with a single tie scribbled in the record books.



FAMOUS FOR
FINE FOOD
and **DRINK**

TONIGHT—enjoy
specialties of these
noted restaurants:

ANTOINE'S
713 St. Louis St.

ARNAUD'S
813 Bienville St.

BROUSSARD'S
819 Conti St.

KOLB'S
125 St. Charles St.

LA LOUISIANE
725 Iberville St.

The Schedules

●

TULANE

Sept. 27—Alabama at New Orleans
Oct. 4—Georgia Tech at New Orleans
Oct. 11—Rice at Houston, Tex.
Oct. 18—Ole Miss at New Orleans
(Homecoming)
Oct. 25—Auburn at New Orleans
Nov. 1—Mississippi State at New Orleans
Nov. 15—Florida at New Orleans
Nov. 22—Notre Dame at South Bend, Ind.
Dec. 6—L. S. U. at New Orleans

●

ALABAMA

Sept. 27—Tulane at New Orleans
Oct. 4—Vanderbilt at Nashville, Tenn.
Oct. 11—Duquesne at Tuscaloosa, Ala.
Oct. 18—Tennessee at Birmingham, Ala.
Oct. 25—Georgia at Athens, Ga.
Nov. 1—Kentucky at Lexington, Ky.
Nov. 15—Georgia Tech at Birmingham, Ala.
Nov. 22—L. S. U. at Tuscaloosa, Ala.
Nov. 28—Miami at Miami, Fla.

For Campus Clothes
of Distinction

COLLEGE MEN
CHOOSE MB



College men know MB clothes are right! With campus big-wigs and extra-curricular leaders the MB label has become a legend for campus smartness. Whether for the stadium . . . an early morning class . . . or a senior prom, MB's clothes are right in fabric, tailoring, famous brand names, and style! Their quality doesn't flunk out. In fact long after you have forgotten about semesters, credits, and the like, MB will still be your headquarters for clothes of distinction.

- *The Store for Men,
MB First Floor*



Maison Blanche
GREATEST STORE SOUTH



Henry Frnka
Head Coach



R. Prats
halfback



M. Balen
guard



D. Doyle
guard



P. Bienz
halfback



J. Campora
halfback



C. Van Meter
halfback



K. Tarzetti
end



E. Price
halfback

TULANE



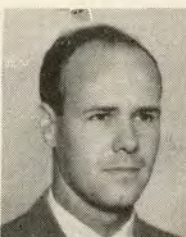
M. McCain
fullback



J. Wasieleski
end



R. Olsen
end



B. Ellender
quarterback



D. Kirschenheuter
center



R. Partridge
end

| No. | Name and Position | Age | Ht. | Wt. | Home Town |
|-----|-----------------------|-----|------|-----|---------------------|
| 25 | Al Waller, hb | 21 | 5-10 | 165 | New Orleans |
| 26 | Bobby Jones, hb | 18 | 5-10 | 170 | Houston, Tex. |
| 27 | Don Fortier, hb | 25 | 5-10 | 170 | New Orleans |
| 29 | Florian Seal, hb | 24 | 5-11 | 175 | New Orleans |
| 31 | Marvin McCain, fb | 22 | 6-0 | 190 | New Orleans |
| 32 | Bennie Ellender, qb | 22 | 6-2 | 187 | Sulphur, La. |
| 33 | Dick Hoot, fb | 22 | 6-0 | 185 | Swarthmore, Pa. |
| 34 | John Wasieleski, e | 22 | 6-0 | 180 | Shamokin, Pa. |
| 35 | Al Fleider, e | 18 | 6-2 | 190 | Berwyn, Ill. |
| 36 | Dan Kirschenheuter, c | 21 | 6-0 | 190 | New Orleans |
| 39 | Harold Headrick, t | 18 | 6-1 | 200 | San Angelo, Tex. |
| 40 | Bill Riggs, e | 18 | 5-11 | 175 | Tulsa, Okla. |
| 41 | George Maddox, g | 19 | 6-1 | 185 | Dallas, Tex. |
| 42 | Paul Bienz, hb | 22 | 5-8 | 170 | Fort Wayne, Ind. |
| 43 | John Campora, hb | 24 | 5-10 | 175 | New Orleans |
| 44 | Jim Keeton, qb | 22 | 5-10 | 185 | Enid, Okla. |
| 45 | Ed Price, hb | 22 | 5-11 | 190 | New Orleans |
| 46 | Ray Prats, hb | 23 | 5-11 | 170 | New Orleans |
| 47 | Rex Partridge, e | 20 | 5-10 | 170 | Odessa, Tex. |
| 48 | Leonard Finley, qb | 24 | 6-0 | 180 | New Orleans |
| 49 | Ed Heider, e | 20 | 6-2 | 180 | New Orleans |
| 50 | Bob Whitman, qb | 23 | 5-10 | 175 | New Orleans |
| 51 | Ronald Chernick, qb | 20 | 5-11 | 185 | Chicago, Ill. |
| 52 | Nick Eggenberger, g | 19 | 5-11 | 200 | White Plains, N. Y. |
| 54 | Stanley Kottemann, c | 22 | 5-11 | 200 | New Orleans |
| 55 | Homer Dedeaux, c | 13 | 6-1 | 185 | Gulfport, Miss. |
| 56 | Bob Franz, t | 22 | 6-1 | 190 | Crystal Lake, Ill. |
| 57 | Emile O'Brien, e | 24 | 5-11 | 180 | New Orleans |
| 58 | David Rowland, g | 20 | 6-2 | 205 | Hot Springs, Ark. |
| 59 | Ken Tarzetti, e | 22 | 6-4 | 190 | DeLisle, Miss. |
| 60 | Mike Balen, g | 24 | 6-0 | 200 | Sawyer ville, Ill. |

(This Roster Copyrighted by Tulane University)



E. Deramee
guard



J. Keeton
quarterback



E. O'Brien
end



W. Svoboda
fullback



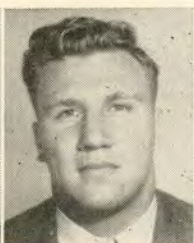
W. McEver
center



W. Villars
tackle



S. Kottemann
Center



V. Klein
tackle



E. Heider
end



J. Tessier
tackle



L. Finley
quarterback



B. Franz
tackle



C. Bounds
tackle



D. Rowland
guard



A. D'Alessio
fullback



R. Chernick
quarterback



R. Brown
guard



D. Rogas
tackle

TULANE

| No. | Name and Position | Age | Ht. | Wt. | Home Town |
|-----|-----------------------|-----|------|-----|---------------------|
| 61 | Ed Deramee, g | 22 | 5-10 | 198 | Thibodeaux, La. |
| 63 | Anthony D'Alessio, fb | 21 | 6-0 | 190 | Philadelphia, Pa. |
| 64 | Ed Lennox, t | 22 | 6-2 | 205 | New Orleans |
| 65 | Dick Chassee, e | 18 | 6-3 | 190 | Chicago, Ill. |
| 66 | Ray Olsen, e | 24 | 6-2 | 190 | New Orleans |
| 67 | Dan Rogas, t | 22 | 6-1 | 200 | Port Arthur, Tex. |
| 68 | Al Demma, g | 19 | 5-11 | 200 | New Orleans |
| 69 | Dennis Doyle, g | 20 | 5-11 | 195 | San Angelo, Tex. |
| 70 | Darwood Holm, g | 23 | 6-0 | 198 | Eau Claire, Wis. |
| 71 | Walter Villars, t | 19 | 6-1 | 205 | New Orleans |
| 72 | Paul Lea, t | 18 | 6-1 | 215 | New London, Tex. |
| 73 | Vic Klein, t | 26 | 6-2 | 210 | New Orleans |
| 75 | Don Joyce, e | 18 | 6-0 | 190 | Stubenville, Ohio |
| 76 | Stanley Wojcik, hb | 21 | 6-1 | 185 | Chicago, Ill. |
| 77 | Cliff Van Meter, hb | 20 | 6-1 | 190 | Henryetta, Okla. |
| 78 | Don Ford, g | 18 | 5-11 | 180 | New Orleans |
| 79 | Tom Heintz, t | 24 | 6-2 | 240 | Hartford, Wis. |
| 80 | Al Crutchfield, c | 18 | 6-1 | 195 | Bristow, Okla. |
| 81 | John Tessier, t | 23 | 6-1 | 205 | New Orleans |
| 82 | Max Druen, t | 20 | 6-1 | 190 | Enid, Okla. |
| 84 | George Kinek, hb | 18 | 6-2 | 185 | Allentown, Pa. |
| 85 | Tom Reising, c | 18 | 6-1 | 190 | Evansville, Ind. |
| 86 | Bill Svoboda, fb | 20 | 5-11 | 195 | Bonham, Tex. |
| 90 | Bobby Maxwell, hb | 18 | 5-9 | 165 | Dallas, Tex. |
| 91 | John Miechowicz, g | 19 | 5-11 | 190 | Chicago, Ill. |
| 92 | Rainey Brown, g | 19 | 5-11 | 200 | New Orleans |
| 93 | Clinton Arnold, fb | 18 | 5-11 | 180 | Pensacola, Fla. |
| 94 | Jerome Helluin, t | 18 | 6-1 | 240 | Donaldsonville, La. |
| 95 | Clemon Bounds, t | 19 | 6-3 | 200 | Pascagoula, Miss. |
| 97 | Bill McEver, c | 23 | 6-3 | 185 | Hillsboro, Tex. |

(This Roster Copyrighted by Tulane University)



R. Chassee
end



R. Hoot
fullback



E. Lennox
tackle



A. Demma
guard



A. Waller
halfback



D. Fortier
halfback



W. Riggs
end



P. Lea
tackle



H. Dedeaux
center



D. Holm
guard



B. Jones
halfback



M. Druen
tackle

The Roosevelt

New Orleans' Finest

In America's Most Interesting City




THE ROOSEVELT is located in the heart of Romantic old New Orleans. It is in the center of business and social activities and is close to the Theatre, Shopping, French Quarter, and Business Districts . . . You will like the tasteful luxury and home-like atmosphere of this modern hotel where the traditions of Southern Hospitality are maintained the year 'round.

800 ROOMS WITH BATH

MODERATE RATES


SEYMOUR WEISS, *President and Managing Director*
J. U. JORDY, *Resident Manager*

The Roosevelt
"The Pride of the South"



Much of the color of football games in Tulane Stadium can be credited to the Tulane University Band, directed by John J. Morrissey, and here shown in one of its halftime formations.

Cam! **CAMPUS PICTURES**
pix
A MEDLEY OF
ANDY ROGERS

An aerial photograph of a large football stadium during a game. The field is filled with players and officials. In the center-right, a marching band is performing in a complex, diamond-shaped formation. The stands are packed with spectators. The field has yard lines and numbers visible. A checkered pattern is visible on the right side of the field.

Fancy-stepping and precision marching drills between the halves are the result of careful planning and the plotting of formations to scale on graph paper.



Preparation of the program and music, however, requires hours of rehearsal and practice by the 75-piece organization.



Adding to the Saturday spectacle are such traditional features as this parade and presentation of Tulane's Homecoming queen and court.



"Your Specialists In Sports"

Johnny Lynch's
SPORTS, INC.

FORMERLY DUNLAP SPORTING
GOODS CO., INC.

*Complete Equipment
For All Sports*

138 CARONDELET ST.
New Orleans 12, La. MAgnolia 5891

"It Pays To Play"

THIS PROGRAM PRINTED
by

TULANE UNIVERSITY PRESS

Printing Department of Tulane University

CAMPUS PRINTERS

BASEMENT
GIBSON HALL

PHONE
WALNUT 0082

HAUSMANN

~

**NEW ORLEANS'
LEADING JEWELERS**

~

Special Department for College
and
Fraternal Jewelry

Time out... Have a Coke



REGAL BEER

SLOW AGED FOR BETTER TASTE

TULANE

STARTING LINEUP

| LE | LT | LG | C | RG | RT | RE |
|-----------------|-------------|---------------|--------------|-------------|---------------|-------------|
| W's'l'skl 34 | Franz 56 | Deramee 61 | K'mann 54 | Doyle 69 | Villars 71 | Olsen 66 |

QB
Keeton
44

LHB
Fortier
27

RHB
Price
45

FB
McCain
31

SQUAD LIST

| | | | |
|------------------|-------------------|------------------|-------------------|
| 25 Waller, hb | 45 Price, hb | 61 Deramee, g | 78 Ford, g |
| 26 Jones, hb | 46 Prats, hb | 63 D'Alessio, fb | 79 Heintz, t |
| 27 Fortier, hb | 47 Partridge, e | 64 Lennox, t | 80 Crutchfield, c |
| 29 Seal, hb | 48 Finley, qb | 65 Chassee, e | 81 Tessier, t |
| 31 McCain, fb | 49 Heider, e | 66 Olsen, e | 82 Druen, t |
| 32 Ellender, qb | 50 Whitman, qb | 67 Rogas, t | 84 Kinek, hb |
| 33 Hoot, fb | 51 Chernick, qb | 68 Demma, g | 85 Reising, c |
| 34 Wasieleski, e | 52 Eggenberger, g | 69 Doyle, g | 86 Svoboda, fb |
| 35 Fleider, e | 54 Kottemann, c | 70 Holm, g | 90 Maxwell, hb |
| 36 Kirsch'ter, c | 55 Dedeaux, c | 71 Villars, t | 91 M'chowicz, g |
| 39 Headrick, t | 56 Franz, t | 72 Lea, t | 92 Brown, g |
| 40 Riggs, e | 57 O'Brien, e | 73 Klein, t | 93 Arnold, fb |
| 41 Maddox, g | 58 Rowland, g | 75 Joyce, e | 94 Helluin, t |
| 42 Bienz, hb | 59 Tarzetti, e | 76 Wojcik, hb | 95 Bounds, t |
| 43 Campora, hb | 60 Balen, g | 77 Van Meter, hb | 97 McEver, c |
| 44 Keeton, qb | | | |

ALABAMA

STARTING LINEUP

| LE | LT | LG | C | RG | RT | RE |
|---------------|---------------|---------------|--------------|----------------|---------------|---------------|
| Steiner 23 | Compton 40 | Wozniak 38 | Mancha 41 | Richeson 49 | Flowers 47 | J. Cain 24 |

QB
Morrow
68

LHB
Gilmer
52

RHB
Cadenhead
13

FB
Tew
10

SQUAD LIST

| | | | |
|------------------|------------------|-----------------|------------------|
| 3 Calvin, fb | 17 S. Cain, qb | 30 Filippini, g | 43 Whitley, g |
| 4 Hicks, fb | 18 Cochran, qb | 31 Fortunato, g | 44 Miller, t |
| 6 Davis, hb | 19 Fleck, e | 32 Holdnak, g | 45 Hannah, t |
| 7 Hodges, fb | 20 Noonan, fb | 33 Franko, g | 46 Radosevich, t |
| 8 Mims, hb | 21 O'Sullivan, t | 34 Lockridge, c | 47 Flowers, t |
| 9 August, hb | 22 Hood, e | 35 May, g | 48 Lauer, c |
| 10 Tew, fb | 23 Steiner, e | 36 Cashio, g | 49 Richeson, g |
| 11 Mosley, hb | 24 J. Cain, e | 37 Cassidy, t | 52 Gilmer, hb |
| 12 Welsh, hb | 25 White, e | 38 Wozniak, g | 57 Kizzire, qb |
| 13 Cadenhead, hb | 26 Pierson, e | 39 Mizerany, g | 62 Pettus, hb |
| 14 Salem, hb | 27 Shouse, e | 40 Compton, t | 64 Abston, hb |
| 15 Lary, e | 28 Chapman, c | 41 Mancha, c | 68 Morrow, qb |
| 16 Avinger, qb | 29 Chambliss, e | 42 Theris, t | |

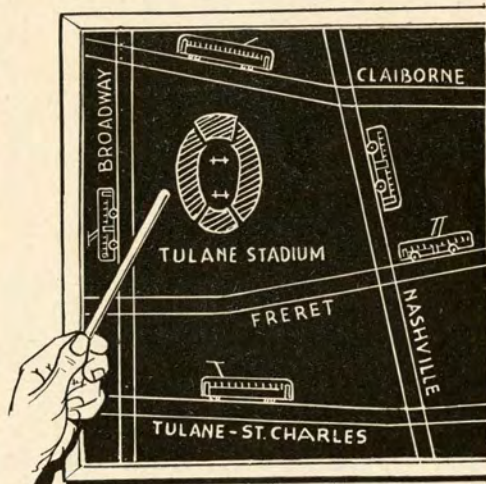
OFFICIALS

Referee—Alvin Bell (Vanderbilt)
Umpire—S. H. Sanders (Texas A. & M.)
Linesman—G. C. Gardner (Georgia Tech)
Judge—W. R. Bentley (Georgia)
Clock—Jack Griffith (Georgia)



TULANE STADIUM





*Don't Buck Traffic
and Parking--Go by*

**STREET CAR or
TROLLEY COACH**

Come on Team of Football Fans! It's time for a little skull practice. This isn't a trick play diagramed. It's just a bit of coachin' in how to get to the stadium the **easy** way . . . by Street Car or Trolley Coach.

No gear-shifting game of stop and start driving for the street car or bus rider. No parking problems either—and no need for that mad dash before the game's over to make a quick getaway. In street cars and coaches you ride relaxed, free from the wear and tear of driving through heavy traffic.

When your "goal to go" is the Tulane Stadium, don't buck the line of snail-pace drivers . . . Go By Street Car or Trolley Coach. The South Claiborne car, the Freret and the Broadway Trolley Coaches take you to the stadium and home again in comfort.



WSMB

1350 Kilocycles



**NEW ORLEANS' OUTLET FOR
THE N B C NETWORK**



**IF YOU CAN'T ATTEND ALL OF
THE TULANE GAMES, LISTEN
TO THE ACCURATE, RAPID-
FIRE BROADCAST ON
W S M B.**

QUALITY

PURITY

FLAVOR



It's Delicious

It's Nutritious



The Newcomb freshman cheering section with its card displays and demonstrations of spirit contributes in large measure to the sideline enthusiasm.





The concert band has been widely acclaimed for its performances and its music has received enthusiastic reviews.

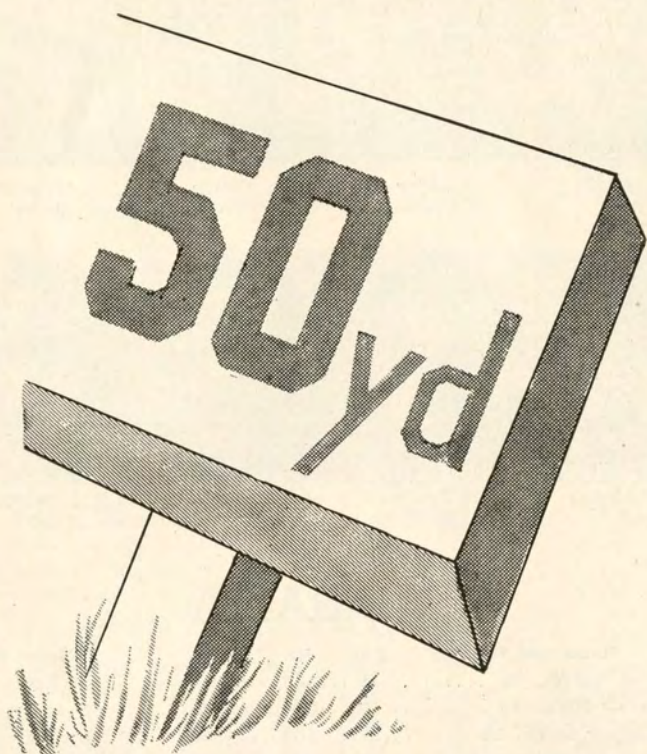


Following the football season, Tulane's band dons tuxedos for the presentation of popular and semi-classical concerts.





The Tulane band preserves for the future its best concert renditions with recording equipment which also enables the band members to have a permanent record of their achievements.



Style...

—On the 50 Yd. Line—

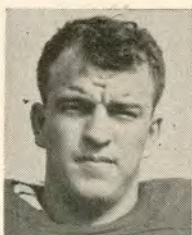
You'll see the smartest, the very latest styles at Porter's, the store where well-dressed men buy their clothes. You see those same smart styles at all the games—because discriminating New Orleans men buy their clothes at Porter's!

by Porter's

Carondelet at Gravier



Harold "Red" Drew
Head Coach



B. Hood
end



W. May
guard



T. Calvin
fullback



J. Wozniak
guard



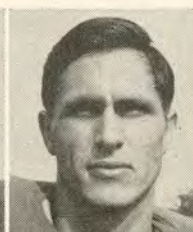
W. Abston
halfback



J. Franko
guard



S. Cain
quarterback



H. Chapman
center



C. Welsh
halfback



D. Kizzire
quarterback



N. Mosley
halfback



L. W. Noonan
fullback



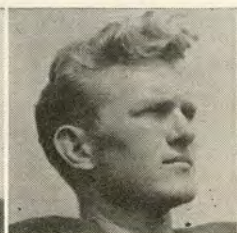
C. Mims
halfback



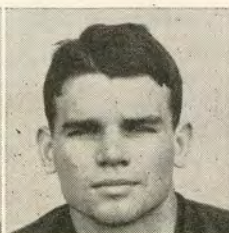
J. August
halfback



G. Cashio
guard



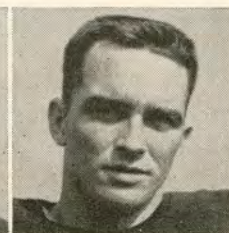
H. Gilmer
halfback



R. Steiner
end



T. Whitley
tackle



H. Morrow
quarterback

ALABAMA

| No. | Name and Position | Age | Ht. | Wt. | Home Town |
|-----|------------------------|-----|------|-----|-------------------|
| 3 | Tom Calvin, fb | 21 | 6-0 | 192 | Athens, Ala. |
| 4 | Travis Hicks, fb | 19 | 5-10 | 195 | Hueytown, Ala. |
| 6 | Charley Davis, hb | 21 | 5-10 | 182 | Uniontown, Pa. |
| 7 | Norwood Hodges, fb | 20 | 5-10 | 165 | Hueytown, Ala. |
| 8 | Carl Mims, hb | 26 | 5-10 | 188 | Sylacauga, Ala. |
| 9 | Johnny August, hb | 26 | 5-10 | 171 | Shadyside, Ohio |
| 10 | Lowell Tew, fb | 20 | 5-11 | 191 | Waynesboro, Miss. |
| 11 | Norman Mosley, hb | 25 | 5-9 | 180 | Blytheville, Ark. |
| 12 | Clem Welsh, hb | 23 | 5-7 | 175 | Winchester, Ill. |
| 13 | Bill Cadenhead, hb | 23 | 6-0 | 176 | Greenville, Miss. |
| 14 | Ed Salem, hb | 19 | 5-10 | 187 | Birmingham, Ala. |
| 15 | Al Lary, e | 19 | 6-2 | 180 | Northport, Ala. |
| 16 | Clarence Avinger, qb | 18 | 6-2 | 201 | Montgomery, Ala. |
| 17 | Sam Cain, qb | 24 | 5-10 | 186 | Bessemer, Ala. |
| 18 | Bob Cochran, qb | 22 | 5-10 | 177 | Hueytown, Ala. |
| 19 | Clarence Fleck, e | 18 | 6-1 | 180 | Birmingham, Ala. |
| 20 | L. W. "Red" Noonan, fb | 22 | 5-11 | 198 | Mobile, Ala. |
| 21 | Pat O'Sullivan, t | 20 | 6-0 | 203 | New Orleans, La. |
| 22 | Bob Hood, e | 23 | 6-0 | 195 | Gadsden, Ala. |
| 23 | Rebel Steiner, e | 20 | 6-0 | 183 | Birmingham, Ala. |
| 24 | Jim Cain, e | 19 | 6-3 | 201 | Eudora, Ark. |
| 25 | Ed White, e | 22 | 6-2 | 195 | Anniston, Ala. |
| 26 | Howard Pierson, e | 20 | 6-4 | 203 | Succasunna, N. J. |
| 27 | Bill Shouse, e | 23 | 6-1 | 189 | Nashville, Tenn. |
| 28 | Herb Chapman, c | 23 | 5-11 | 195 | Elmore, Ala. |
| 29 | Byron Chambliss, e | 23 | 6-3 | 210 | Birmingham, Ala. |



E. Holdnak
guard

B. Filippini
guard

V. Mancha
center

B. Chambliss
end

D. Flowers
tackle

L. Lauer
center



G. Pettus
halfback

E. Salem
halfback

S. Fortunato
guard

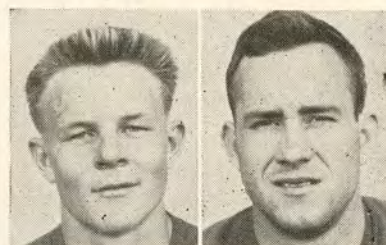
D. Lockridge
center

T. Hicks
fullback

N. Hodges
fullback

ALABAMA

| No. | Name and Position | Age | Ht. | Wt. | Home Town |
|-----|--------------------|-----|------|-----|----------------------|
| 30 | Bruno Filippini, g | 22 | 6-0 | 191 | Powhatan, Ohio |
| 31 | Steve Fortunato, g | 19 | 5-8 | 190 | Mingo Junction, Ohio |
| 32 | Ed Holdnak, g | 20 | 5-9 | 194 | Kenvil, N. J. |
| 33 | Jim Franko, g | 23 | 5-11 | 196 | Yorkville, Ohio |
| 34 | Doug Lockridge, c | 19 | 6-0 | 203 | Jasper, Ala. |
| 35 | Walter May, g | 21 | 6-0 | 186 | Mobile, Ala. |
| 36 | Gri Cashio, g | 26 | 5-9 | 195 | Gadsden, Ala. |
| 37 | Mike Cassidy, t | 20 | 6-2 | 198 | Neffs, Ohio |
| 38 | John Wozniak, g | 25 | 5-11 | 208 | Fairhope, Pa. |
| 39 | Mike Mizerany, g | 19 | 5-10 | 205 | Birmingham, Ala. |
| 40 | Charley Compton, t | 24 | 6-2 | 209 | Sylacauga, Ala. |
| 41 | Vaughn Mancha, c | 25 | 6-1 | 241 | Birmingham, Ala. |
| 42 | Bill Theris, t | 21 | 5-10 | 196 | Mobile, Ala. |
| 43 | Tom Whitley, g | 23 | 6-1 | 178 | Birmingham, Ala. |
| 44 | Floyd Miller, t | 22 | 6-2 | 221 | Oneonto, Ala. |
| 45 | Herb Hannah, t | 26 | 6-3 | 219 | Athens, Ala. |
| 46 | Bill Radosevich, t | 26 | 6-0 | 229 | Midland, Pa. |
| 47 | Dick Flowers, t | 25 | 6-0 | 207 | Mobile, Ala. |
| 48 | Larry Lauer, c | 20 | 6-2 | 217 | Wilmette, Ill. |
| 49 | Ray Richeson, g | 23 | 6-0 | 221 | Russellville, Ala. |
| 52 | Harry Gilmer, hb | 21 | 6-0 | 160 | Birmingham, Ala. |
| 57 | Doyle Kizzire, qb | 22 | 5-9 | 175 | Birmingham, Ala. |
| 62 | Gordon Pettus, hb | 19 | 6-0 | 171 | Birmingham, Ala. |
| 64 | Bill Abston, hb | 22 | 5-10 | 170 | Peterson, Ala. |
| 68 | Hugh Morrow, qb | 20 | 5-9 | 161 | Birmingham, Ala. |



J. Cain
end

E. White
end



W. Theris
tackle

C. Compton
tackle



W. Snouse
end

B. Cocran
quarterback



L. Tew
fullback

M. Cassidy
tackle

F. Miller
tackle

R. Richeson
guard

W. Cadenhead
halfback



THIRD FLOOR: New Antoine Beauty Salon. New enlarged Intimate Apparel and Corset Shop.

FOURTH FLOOR: An entire floor dedicated to the finest in women's fashions. An exquisite floor . . . a showplace you'll want to see.

FIFTH FLOOR: Our New Fifth Floor Shops For Youth, dedicated to the younger generation. Infants, Tod-

dlers, Girls and Smart-Teens fashions. Infants Furniture Shop. A complete new Gift Shop.

SIXTH FLOOR: A new Career Hat Shop and an exquisite women's Shoe Salon.

SEVENTH FLOOR: A complete new floor housing Godchaux's New Career Shops. Ready-to-wear and sports wear for the Career Girl.



PIGSKIN ROUNDUP

L.S.U. vs Rice—This one proved an enigma same time last season. And the difference is just as thin now as then. It'll be two masters of the "T" in the Tigers' Tittle against the Owls' Eikenberg. A wee small voice ventures: the Owls.

California vs Navy—They'll be serving "Waldorf" salad to the far-off-base Middies. By a spoon's length, Navy.

Michigan vs Michigan State—A powerhouse Crisler crew opens against the completely New Deal Spartans who've changed coaches, formations and even their colors. The Statemen, however, will wish they could shuffle their way out of this one. Michigan.

Ole Miss vs Florida—Conerly's coming and the 'Gators 're going. Ole Miss.

Army vs Villanova—Herein a depleted West Point team tackles a stoutly reinforced Wildcat array. The Cadet victory string may be endangered, but we'll stick with the champs till they go down.

Columbia vs Rutgers—Lou Little's Lions are loose. Columbia.

North Carolina vs Georgia—Return engagement, but this time a roadshow for the Georgians who'll be minus the services of their leading character actor. On the gentle slopes of

Chapel Hill, Justice will be done. North Carolina.

Cornell vs Lehigh—The Ithicans to make the boys from Bethlehem see red. Cornell.

Texas vs Oregon—From the plains of the Panhandle comes a Texas Tornado which is headed straight for Portland. And the Webfeet will be in the wrong "Layne." Texas.

S.M.U. vs Santa Clara—The Mustangs to break the bucking Broncos into the Southwest way of keeping aloft. S.M.U.

Georgia Tech vs Tennessee—Another titanic opening tussle. Teacher Bob Neyland vs Pupil Bobby Dodd. Your guess is as good as mine!

Northwestern vs Vanderbilt—A meeting of an S.E.C. "surprise package" and a Big Nine also-ran. Strictly from Southern pride, suh, the Commodores to keep 'em running.

Southern Cal vs Washington State—The Cougars, returning intact, last year blew a close one in the final minute to the Trojans. Look for another toughie, but the "Men of Troy" to triumph.

Slim-pickings—Arkansas over North Texas; Kentucky over Cincinnati; Holy Cross over Dartmouth; Duke over North Carolina State; Illinois over Pittsburgh; T.C.U. over Oklahoma A.M.; Wisconsin over Purdue.

—Carol Hart

Official timing watch for the

TULANE-ALABAMA FOOTBALL GAME

Longines

The World's Most Honored Watch
winner of 10 world's fair grand prizes,
28 gold medals, and more honors for
accuracy than any other timepiece



Product of Longines-Wittnauer Watch Co.

The Official Watch for Timing All Tulane Games is a Longines—"The World's Most Honored Watch"

TULANE SONGS



ALMA MATER

We praise thee for thy past, O Alma Mater!
Thy hand hath done its work full faithfully;
The incense of thy spirit hath ascended
And filled America from sea to sea!

We praise thee for thy present, Alma Mater!
Today thy children look to thee for bread!
Thou leapest them to dreams and actions
splendid!
The hunger of their souls is richly fed!

We praise thee for thy future, Alma Mater!
The vista of its glory gleameth far!
We shall ever be part of thee, great Mother!
There thou will be where e'er thy children are!

Chorus

Olive Green and Blue, we love thee.
Pledge we now our fealty true.
Where the trees are ever greenest,
Where the skies are purest blue.
Hear us now, O Tulane, hear us.
As we proudly sing to thee!
Take from us our hearts' devotion!
Thine we are, and thine shall be!

ROLL ON, TULANE

Here's a song for the Olive and the Blue.
Here's a cheer for the team that's tried and true.
Here a pledge of loyalty to thee,
Oh, Tulane Varsity.
Here's to the Greenbacks that never will say die,
And here's to the hearts that are true
To the men of Tulane, who are fighting for her
name,
For the Olive and the Blue.

Chorus

Roll, Green Wave,
Roll them down the field.
Hold, Green Wave,
That line must never yield.
When those Greenbacks charge through the line
They're bound for victory.
Hail, Green Wave,
For you we give a cheer.
Hail Green Wave,
For you we have no fear.
So ev'ry man in ev'ry play,
And then we'll win that game today.
Hurrah for Old Tulane.

TULANE FIGHT SONG

Green Wave, Green Wave,
Hats off to thee,
Fight, fight, fight for our victory
Shout to the skies
The Green Wave war cry.
The bravest we'll defy.
Hold that line for Olive and Blue
We will cheer for you.
So fight, fight, Old Green Wave
Right on to victory.

Douglas gives you . . .

HIGH QUALITY AT FAIR PRICES



Style CRUISER
No. 6628



Style CAMPUS
No. 6607



The Hand of a Master Craftsman is Behind This Trusted Trademark

Douglas Shoes

W.L. DOUGLAS SHOE CO., BROCKTON 15, MASS.

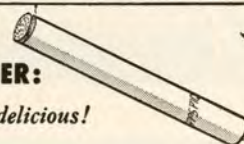
218 ST. CHARLES STREET

Stores in Principal Cities—Good Dealers Everywhere

**Know
the
score
in
flavor!**

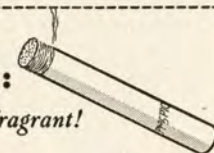
**FIRST
QUARTER:**

Simply delicious!



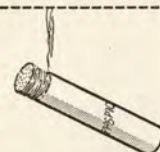
**SECOND
QUARTER:**

Mild and fragrant!



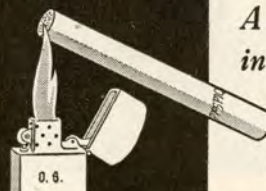
**THIRD
QUARTER:**

Cool as can be!



**FINAL
SCORE:**

*A touchdown
in taste!*



Old Gold

*Seen at all
the games . . .*



**CLOTHES FROM
MAYER ISRAEL'S . . .**

for over half a century the
store of fine fashions for
men, women and children.

Mayer Israel's

TULANE CHEERS

HULLABALOO

Hu- la- ba- loo Ray-Ray!
Hu- la- ba- loo Ray-Ray!
Hoo-Ray! Hoo-Ray!
Vars, Vars, tee-ay!
Tee-ay! Tee-ay!
Vars, Vars, tee-ay!
Tulane!

KILL

Scream! (Drawn out)
Kill! Kill!! Kill!

T. U. YELL

T - U
L - A
Nnnnn E!
Fight! Fight! Fight!

GREEN WAVE

R-o-o-ll On!
Gre-e-e-n Wave!
R-o-o-ll On!
Gre-e-e-n Wave!
R-o-o-ll On!
Gre-e-e-n Wave!

LOCOMOTIVE

T- U- L- A- N- E-
T- U- L- A- N- E-
T- U- L- A- N- E-
RAH!
T - u - u - LANE!

YEA, TEAM

Yea Team Fight!
Ray Team Fight!
Yea Team!
Ray Team!
FIGHT! FIGHT!
FIGHT!

VICTORY

V-I-C-T-O-R-Y
Victory! Victory!
That's our cry.

ECHO

| | | |
|------------------|---|---|
| Cheerleaders: | | T |
| Crowd! | T | |
| Cheerleaders: | | U |
| Crowd! | U | |
| Cheerleaders: | | L |
| Crowd! | L | |
| Cheerleaders: | | A |
| Crowd! | A | |
| Cheerleaders: | | N |
| Crowd! | N | |
| Cheerleaders: | | E |
| Crowd! | E | |
| All: T-u-u-lane! | | |
| FIGHT! | | |



Everything in Flowers

Camellias

See our Camellias under glass
From November 1st to
end of Camellia season.

Every known variety. Sturdy healthy
young trees. Own root and grafted
plants. Over 150 varieties represent-
ing the cream of the Southern nursery
stock are always on hand.

\$1.50 to \$150.00

LANDSCAPING . . . If you are planning a new home, or if you wish to beautify the setting of your present one, we offer a landscape gardening service on a scientific basis, from drawing board to perfect garden especially designed to fit your special requirements. All sketches and designs executed by a Graduate Landscape Architect.

CUT FLOWERS. For every occasion — for sentiment and for remembrance. We specialize in big orders: Weddings, parties, home, church and club decoration, and all festive events. Distinctive corsages are a "specialty of the house."

All Azaleas, Camellias, trees, vines, evergreens, ornamental shrubs, ferns
and potted plants always available at reasonable prices.

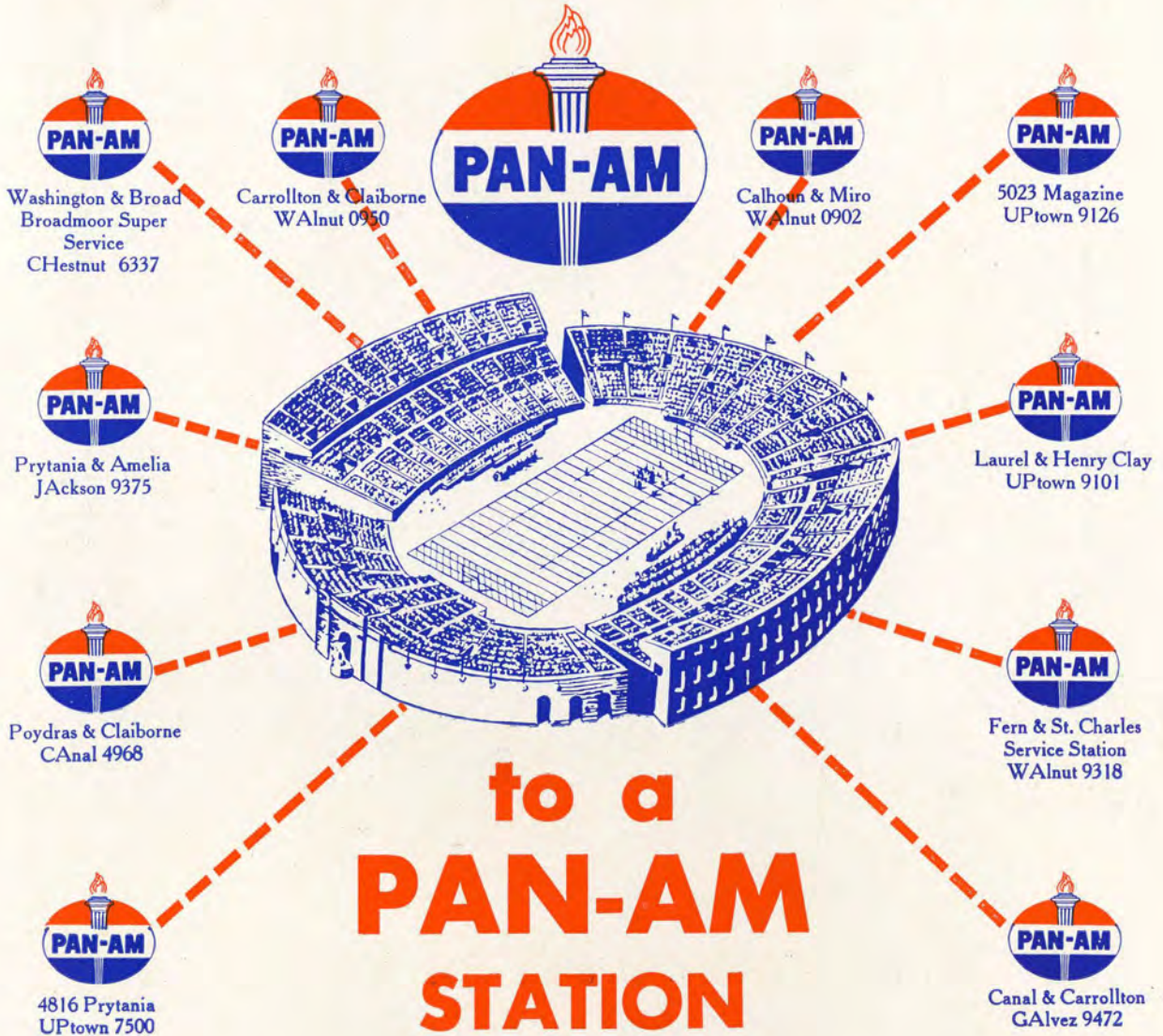
Ellis F. Robbert, Inc.

1221 S. BROAD

RAYmond 9104

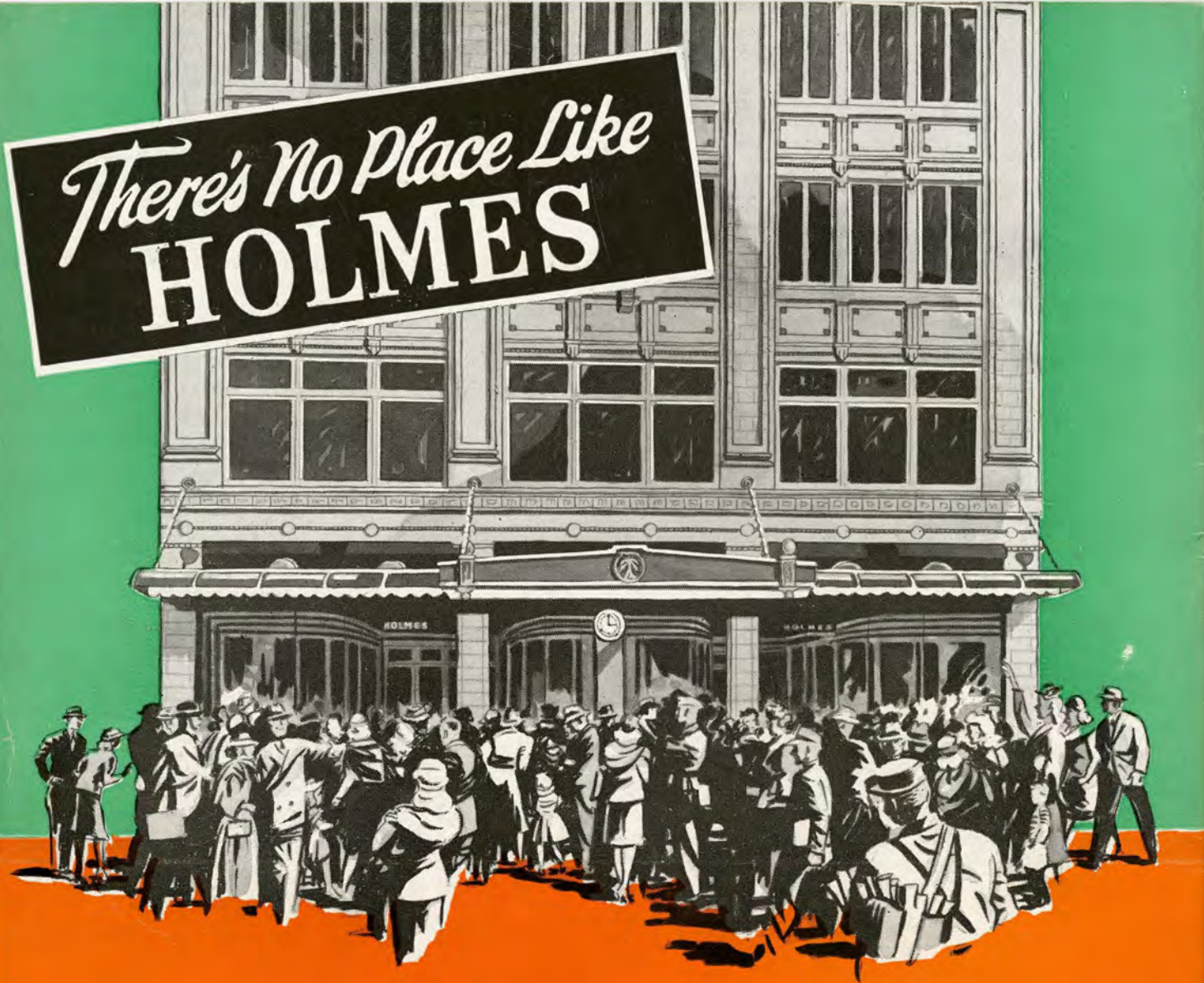
"Flowers are Important"

only a few yards to go...



(Other Pan-Am Stations conveniently located in all parts of the City.)

There's No Place Like
HOLMES



"Meet Me Under the Clock at Holmes"

After the game, have dinner in HOLMES RESTAURANT,
in the Vieux Carre — on Bourbon Street just off Canal —
open daily except Sunday from 11 A. M. to 8:30 P. M.
Delicious French and Creole Cuisine served in an atmosphere
of quiet refinement.

D.H.HOLMES CO., Ltd.
NEW ORLEANS' QUALITY DEPARTMENT STORE