



TULANE vs. BAYLOR

NOVEMBER 13, 1948

Souvenir Program

Thirty-Five Cents



The Sportsman's Beverage

DRINK **JAX**



JACKSON BREWING CO.
NEW ORLEANS, LA.

Listen to

"TIME OUT" with Johnny Lynch
WWL Thursdays 9:45 to 10 P. M.

"WORLD OF SPORTS"
with Bill Brengel

WWL Mon. thru Sat. 5:35 to 5:45 P. M.



Tulane Stadium

THE GREENIE

*Official Souvenir Football Program
of Tulane University*

Vol. 18
No. 7

CONTENTS

| | Page |
|------------------------------|-------------|
| Editorial | 3 |
| The Bruin Braintrust | 5 |
| Tulane Roster | 6-7 |
| Cam-Pix | 9-12, 17-20 |
| Starting Lineups | 14-15 |
| Tulane Yells | 21 |
| Baylor Roster | 22-23 |
| Tulane-Baylor Schedules | 25 |
| Tulane Songs | 26 |
| Pigskin Roundup | 27 |

National
Advertising
Representatives
Football Publi-
cations, Inc
370 Lexington Avenue
New York, N. Y.

Co-Editors,

ANDY ROGERS

BILL JOHNSTON



MAISON BLANCHE
GREATEST STORE SOUTH

TULANE
AT NEW ORLEANS
FRI. NOV. 13. 12.15PM
FRI. NOV. 13. 12.15PM

**That's
The Ticket**

A hard-to-beat team! Your Tulane Football Ticket . . . plus your MB Label-of-Quality!

Now, as always, Maison Blanche has the line-up of the famous labels you want and buy with confidence. No matter what the occasion . . . MB has the right clothes . . . on one of its famous fashion floors.

MAISON BLANCHE
GREATEST STORE SOUTH

OVER FROM TEXAS

A healthy bunch of Bears, fuzzy in no spots at all when it comes to the question of football, embark on the now well-worn turf of Tulane Stadium today bent on untangling a knot of long standing.

More than a quarter of a century and a decade ago it was that another family of Bruins was engulfed by the Wave that is Green, only to come back later that same year to redeem itself.

Tattered ledgers of the year 1908 reveal the Waco warriors were scalped 10-2 in the first game that year but came back later to emerge with a 6-0 decision. That, incidentally, was the only year a gridiron has been the battle scene for Tulane and Baylor and marked the last time a Wave football team was to engage the same foe twice in a season. Only other time such a feat occurred was in 1899 when another Texas aggregation—the Longhorns—won both games, 11-0 at New Orleans, and 32-0 at Austin.

Any resemblance between the 1947 and 1948 Bears is purely coincidental. Coach Bob Woodruff has brought them up the ladder of success at a dizzy clip and whereas last year they were stumbling in the darkness of the Southwest Conference cellar, they are this year marching toward the light of a Conference championship.

Only a 7-7 tie mars the 1948 Bear record, that against the Maroons of Mississippi State, a team whose well-rounded offense extended the Greenies before they achieved a 9-0 triumph.

A century from now historians will find the Bears with conquests over Tulsa, Ar-

kansas, Texas Tech, Texas Aggies and T.C.U., to their credit before they came to Tulane.

Adrian Burk, a junior college transfer, joins with Hayden Fry, a sophomore, to supply the main spring in the Bear offense. Burk handles a major part of the Bear's passing and also does the punting. Other backfield posts are competently held by Gabby Sims at left halfback; Jitterbug Frank McKinney at right halfback and Ben Hall at fullback.

The Baylor team, coached by a man who served as line coach under Georgia Tech, would naturally tend toward the "T" as the Engineers. It will also employ the double team system this afternoon.

"Your Specialists In Sports"

Johnny Lynch's

SPORTS, INC.

FORMERLY DUNLAP SPORTING
GOODS CO., INC.

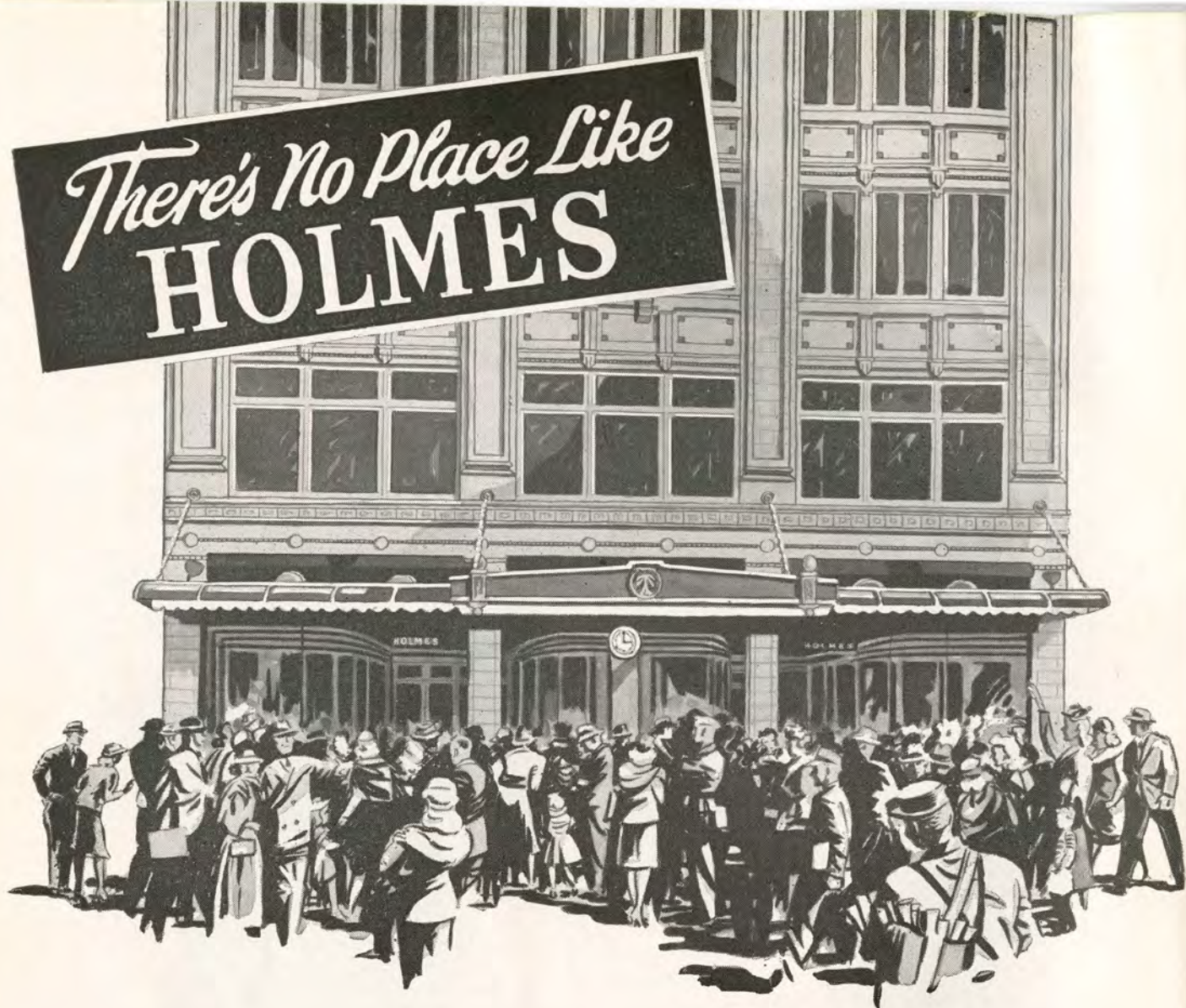
*Complete Equipment
For All Sports*

138 CARONDELET ST.

New Orleans 12, La. MAGnolia 5891

"It Pays To Play"

There's No Place Like
HOLMES



"Meet Me Under the Clock at Holmes"

After the game, have dinner in HOLMES RESTAURANT,
in the Vieux Carre — on Bourbon Street just off Canal —
open daily except Sunday from 11 A. M. to 8:30 P. M.
Delicious French and Creole Cuisine served in an atmosphere
of quiet refinement.

D.H.HOLMES CO., Ltd.

NEW ORLEANS' QUALITY DEPARTMENT STORE

THE WAVE ROLLS

That lucky seventh comes up today for Tulane's Green Wave—victorious in six of its seven appearances this season for the best Wave record since 1939.

And that record so far compares favorably with the best in the Southeastern Conference, a loss by six-points serving as the only blemish.

Up to this point, four SEC teams have dropped a single game—Tulane, Georgia, Georgia Tech and Mississippi. Of that quartet, Tulane has lost by six points to Tech; Georgia by seven to North Carolina and Tech by seven to Tennessee; and Mississippi by 13 points to Tulane.

Thus the Greenies rank right along with front-runners, thanks to a well-rounded offensive and defensive style and a one-for-all-and-all-for one spirit. Such staunch foes as Alabama, Ole Miss, Auburn, and Mississippi State in the conference have felt the brunt of Tulane power along with South Carolina and V.M.I. from the Southern Conference.

This 1948 team represents the Henry

Frnka philosophy of a well-rounded football team—good running, good passing, good kicking. Eddie Price's slicing runs around end over tackle and through the middle have contributed 758 yards to the Wave offense. But such stalwarts in the line as George Maddox at center, Rainey Brown and Dennis Doyle at guards; Max Druen and Dan Rogas at tackle and Hank Watkins, Dick Sheffield and Captain Emile O'Brien at the ends have contributed the blocking for such thrusts.

In addition, Joe Ernst's passing—37 completions out of 90 attempts through the first seven games—has been a constant threat while the running of Jimmy Glisson, George Kinek, John Sikora, Al Waller and the rest have kept constant pressure on opponents at all positions.

Another outstanding feature has been the defensive operations of many Greenies—in the line particularly by Rex Partridge and Joe Harper at ends; Paul Lea and Clemon Bounds at the tackles; Harold Headrick and Bob Franz at guards; and Homer Dedeaux and Stanley Kottemann at centers.

Superlative line-backing by Bill Svoboda at right-halfback; and great pass defensive tactics by Jim Keeton, Bobby Jones and Johnnie Hickman have teamed with the line bulwarks to limit every Tulane opponent this year to two touchdowns or less.

And so today—on this final home game of the 1948 season—it's not amiss to pay tribute to a combination that has typified the greatest of teamwork and to Tulane Coach Henry Frnka whose untiring efforts have shaped the Wave's greatest team in almost a decade.

Tune In—

THE BIGGEST SHOW IN TOWN!

Radio Station

WWL

All Tulane Games

Broadcast Exclusively Over WWL

870 ON YOUR DIAL

50,000 watts—Clear channel

CBS AFFILIATE

A Great Name in Clothing

SCHWOBILT
CLOTHES REG. U.S. PAT. OFF.

"SUITS THE SOUTH"



Henry Frnka
Head Coach



C. Bounds
tackle



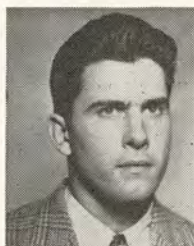
J. Sikora
back



R. Brown
guard



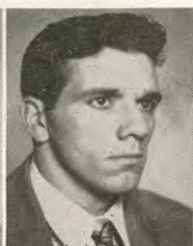
M. Druen
tackle



N. Eggenberger
guard



G. Maddox
center



B. Franz
guard



E. Price
back



B. Maxwell
back



J. Hickman
back



H. Dedeaux
center



R. Sheffield
end



P. Bienz
back



R. Svoboda
back



A. Fleider
end



T. Reising
guard



P. Lea
tackle



E. O'Brien
end



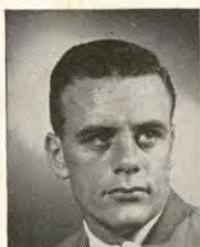
J. Helluin
tackle



W. Villars
guard

TULANE

| No. | Name and Position | Age | Ht. | Wt. | Hometown |
|-----|----------------------|-----|---------|-----|---------------------|
| 10 | Jim Keeton, b | 23 | 5-11 | 172 | Enid, Okla. |
| 11 | Bill Bonar, b | 19 | 6-1 | 185 | Bellaire, Ohio |
| 12 | Don Fortier, b | 26 | 5-9 | 170 | New Orleans |
| 13 | Joe Ernst, b | 20 | 6- | 185 | New Orleans |
| 14 | Jimmy Dick, b | 19 | 6-2 | 170 | Tulsa, Okla. |
| 16 | Bob Whitman, b | 24 | 5-11 | 175 | New Orleans |
| 20 | George Kinek, b | 19 | 6-2 1/2 | 190 | Allentown, Pa. |
| 21 | Ray Prats, b | 23 | 5-8 | 175 | New Orleans |
| 23 | Bobby Jones, b | 19 | 5-9 | 170 | Houston, Tex. |
| 25 | Al Waller, b | 22 | 5-10 | 165 | New Orleans |
| 26 | Cliff Van Meter, b | 21 | 6-2 | 198 | Henryetta, Okla. |
| 31 | Bill Svoboda, b | 21 | 5-11 | 200 | Bonham, Tex. |
| 32 | Johnnie Hickman, b | 23 | 6-1 | 190 | Robert E. Lee, Tex. |
| 35 | Harry Hahn, b | 20 | 5-8 | 185 | New Orleans |
| 40 | John Sikora, b | 22 | 6-2 | 185 | Gary, Ind. |
| 41 | Jimmy Glisson, b | 20 | 5-10 | 171 | Yazoo City, Miss. |
| 42 | Paul Bienz, b | 23 | 5-7 | 170 | Fort Wayne, Ind. |
| 43 | Bobby Maxwell, b | 19 | 5-8 | 165 | Dallas, Tex. |
| 45 | Eddie Price, b | 23 | 5-11 | 188 | New Orleans |
| 50 | Homer Dedeaux, c | 20 | 6-2 | 197 | Gulfport, Miss. |
| 51 | George Maddox, c | 20 | 6-2 | 199 | Dallas, Tex. |
| 52 | Al Crutchfield, c | 19 | 6-1 | 190 | Bristow, Okla. |
| 53 | Vernon Vick, c | 22 | 5-11 | 188 | Port Arthur, Tex. |
| 54 | Stanley Kottemann, c | 23 | 6- | 194 | New Orleans |
| 55 | Henry Boyles, c | 25 | 6- | 203 | Magnolia, Ark. |
| 60 | Dennis Doyle, g | 21 | 5-11 | 205 | San Angelo, Tex. |
| 61 | Harold Headrick, g | 19 | 6-1 | 203 | San Angelo, Tex. |



R. Eddy
tackle



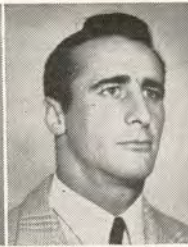
D. Doyle
guard



S. Kottelman
center



R. Partridge
end



A. Waller
back



A. Kleinschmidt
guard



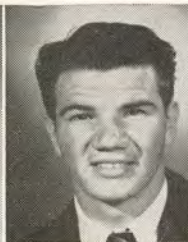
D. Fortier
back



G. Kinek
back



R. Prats
back



D. Joyce
tackle



J. Keeton
back



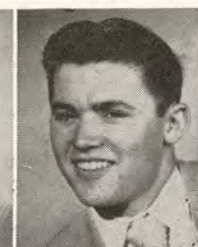
C. Van Meter
back

TULANE

| No. | Name and Position | Age | Ht. | Wt. | Hometown |
|-----|------------------------|-----|------|-----|----------------------|
| 62 | Arthur Kleinschmidt, g | 22 | 5-11 | 209 | New Orleans |
| 64 | Nick Eggenberger, g | 20 | 6- | 195 | White Plains, N. Y. |
| 65 | Rainey Brown, g | 20 | 5-11 | 207 | New Orleans |
| 66 | Bob Franz, g | 23 | 6-2 | 198 | Crystal Lake, Ill. |
| 67 | Vernon Ramke, g | 23 | 6-1½ | 208 | Port Neches, Tex. |
| 68 | Tom Reising, g | 19 | 6-½ | 195 | Evansville, Ind. |
| 70 | Euel Davis, t | 26 | 6-3 | 235 | Van Buren, Ark. |
| 71 | Paul Lea, t | 19 | 6-2 | 215 | New London, Tex. |
| 72 | Max Druen, t | 21 | 6-2 | 206 | Enid, Okla. |
| 73 | Clemon Bounds, t | 20 | 6-4 | 215 | Pascagoula, Miss. |
| 74 | David Rowland, t | 21 | 6-2 | 215 | Hot Springs, Ark. |
| 75 | Walter Villars, t | 20 | 6-1½ | 207 | New Orleans |
| 76 | Dan Rogas, t | 23 | 6-½ | 216 | Port Arthur, Tex. |
| 77 | Don Joyce, t | 19 | 6-½ | 205 | Stubenville, Ohio |
| 78 | Jerome Helluin, t | 19 | 6-2 | 280 | Donaldsonville, La. |
| 79 | Bob Eddy, t | 20 | 6-2 | 225 | Carthage, Mo. |
| 80 | Dick Sheffield, e | 24 | 6-½ | 187 | Kirbyville, Tex. |
| 81 | Rex Partridge, e | 21 | 5-8 | 172 | Odessa, Tex. |
| 82 | Bill Riggs, e | 19 | 6- | 185 | Tulsa, Okla. |
| 83 | Joe Harper, e | 19 | 6-½ | 186 | Houston, Tex. |
| 84 | Ferdie Kibodeaux, e | 20 | 6-1½ | 189 | Jennings, La. |
| 85 | Al Fleider, e | 19 | 6-2 | 205 | Berwyn, Ill. |
| 86 | Emile O'Brien, e | 25 | 6- | 194 | New Orleans |
| 88 | Hank Watkins, e | 23 | 6-1½ | 194 | Corpus Christi, Tex. |
| 89 | Jack Doland, e | 20 | 6- | 175 | Lake Arthur, La. |
| 90 | Dick Chassee, e | 19 | 6-4 | 207 | Chicago, Ill. |
| 91 | Dick Preis, e | 20 | 5-10 | 170 | Metairie, La. |



D. Rogas
tackle



R. Jones
back



B. Whitman
back



V. Ramke
guard



Hank Watkins
end



Joe Harper
end



H. Headrick
guard



Euel Davis
tackle



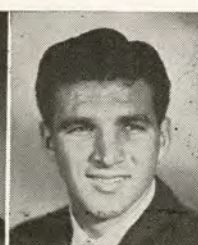
B. Bonar
back



B. Riggs
end

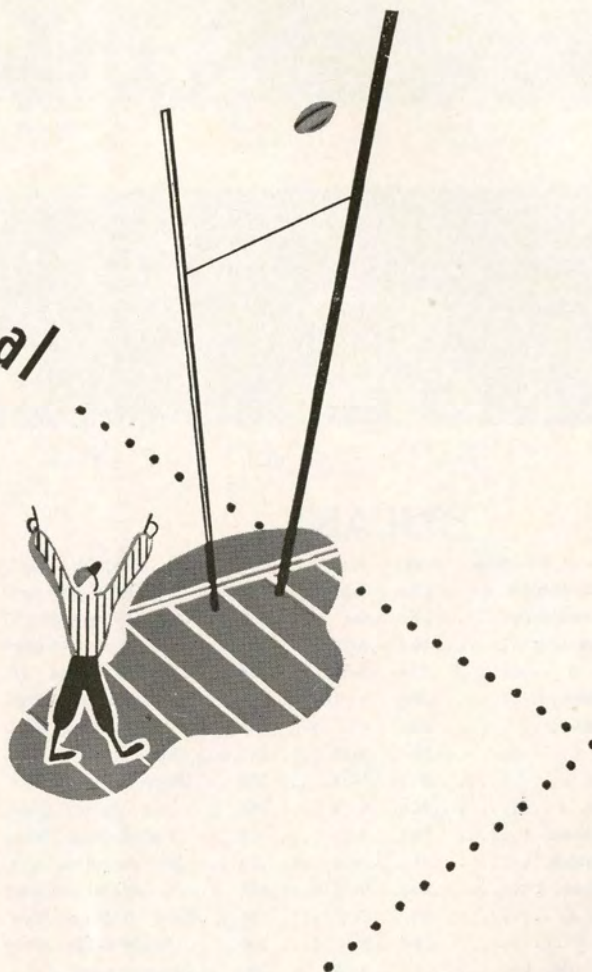


V. Vick
center



J. Ernst
back

our goal



your fullest enjoyment of godchaux's
authentic fashion apparel... distin-
guished by unsurpassed quality
and unchallenged good taste.

Godchaux's

since 1840—fine apparel for men, women, boys and girls

Cam- pix

A MEDLEY OF
CAMPUS PICTURES

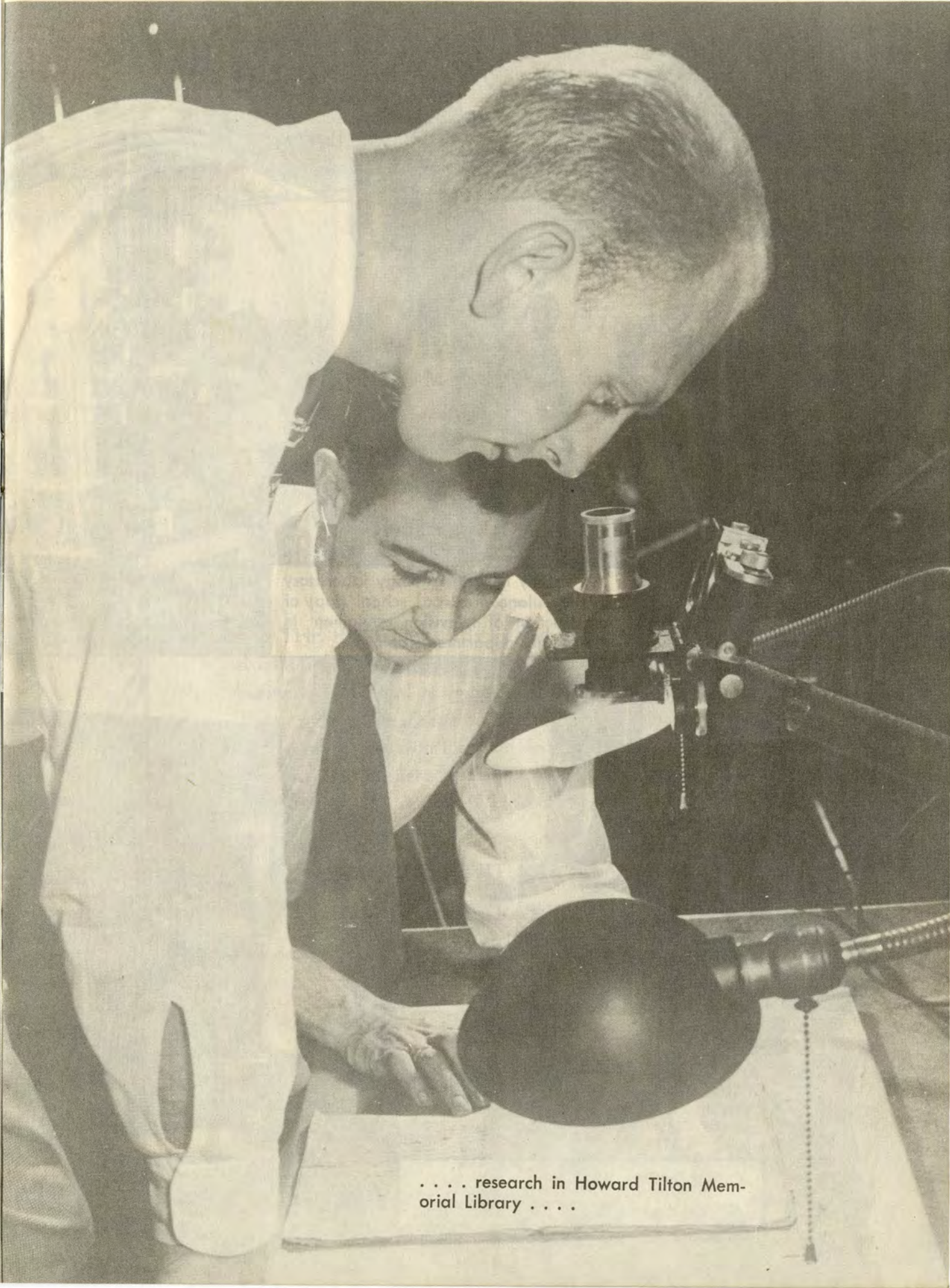
Just wandering with your Cam-Pix photographer on the Tulane campus might find students enjoying New Orleans sunshine



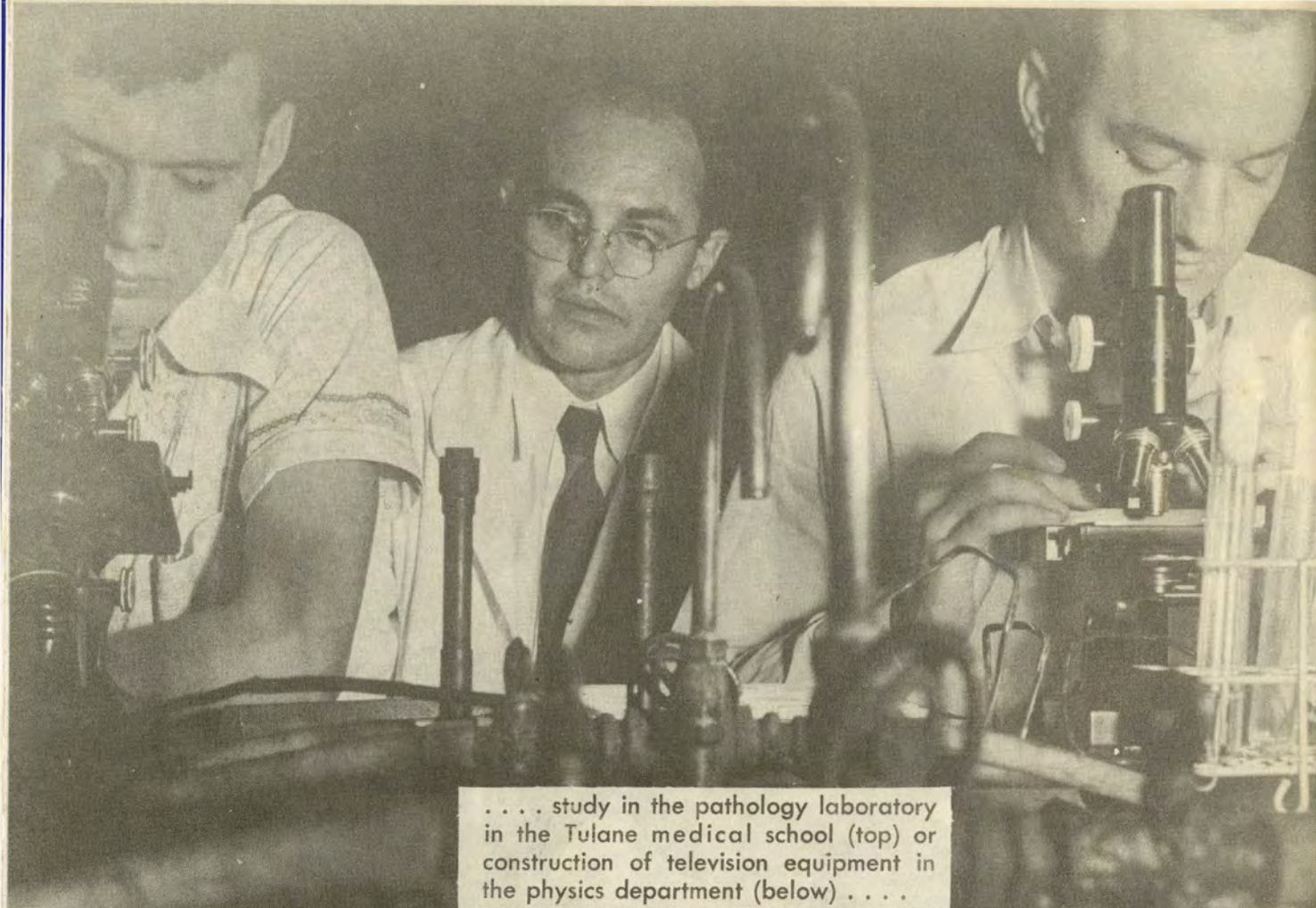


... the Tulane University Band giving a concert (top) of a Glendy Burke debate taking place (below)





. . . . research in Howard Tilton Mem-
orial Library



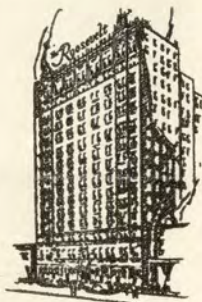
... study in the pathology laboratory
in the Tulane medical school (top) or
construction of television equipment in
the physics department (below) ...



The Roosevelt

New Orleans Finest

In America's Most Interesting City



THE ROOSEVELT is located in the heart of Romantic old New Orleans. It is in the center of business and social activities and is close to the Theatre, Shopping, French Quarter, and Business Districts . . . You will like the tasteful luxury and home-like atmosphere of this modern hotel where the traditions of Southern Hospitality are maintained the year 'round.

800 ROOMS WITH BATH

MODERATE RATES

SEYMOUR WEISS, *President and Managing Director*
J. U. JORDY, *Resident Manager*

The Roosevelt
"The Pride of the South"

REGAL BEER

FRIENDLY FLAVOR-NEVER BITTER

TULANE

PROBABLE STARTING LINEUP

| LE | LT | LG | C | RG | RT | RE |
|---------------|-------------|-------------|--------------|-------------|-------------|---------------|
| S'field 80 | Druen 72 | Brown 65 | Maddox 51 | Doyle 60 | Rogas 76 | O'Brien 86 |

QB
Ernst
13

LHB
Kinek
20

RHB
Svoboda
31

FB
Price
45

SQUAD ROSTER

| | | | |
|------------------|-------------------|-------------------|-----------------|
| 10 Keeton, qb | 40 Sikora, hb | 64 Eggenberger, g | 79 Eddy, t |
| 11 Bonar, qb | 41 Glisson, hb | 65 Brown, g | 80 Sheffield, e |
| 12 Fortier, hb | 42 Bienz, fb | 66 Franz, g | 81 Partridge, e |
| 13 Ernst, qb | 43 Maxwell, hb | 67 Ramke, g | 82 Riggs, e |
| 14 Dick, hb | 45 Price, fb | 68 Reising, g | 83 Harper, e |
| 16 Whitman, qb | 50 Dedeaux, c | 70 Davis, t | 84 Kibodeaux, e |
| 20 Kinek, hb | 51 Maddox, c | 71 Lea, t | 85 Fleider, e |
| 21 Prats, hb | 52 Crutchfield, c | 72 Druen, t | 86 O'Brien, e |
| 23 Jones, hb | 53 Vick, c | 73 Bounds, t | 88 Watkins, e |
| 25 Waller, hb | 54 Kottemann, c | 74 Rowland, t | 89 Doland, e |
| 26 Van Meter, hb | 55 Boyles, c | 75 Villars, t | 90 Chassee, e |
| 31 Svoboda, hb | 60 Doyle, g | 76 Rogas, t | 91 Preis, e |
| 32 Hickman, fb | 61 Headrick, g | 77 Joyce, t | |
| 35 Hahn, fb | 62 Kl'nschmidt, g | 78 Helluin, t | |

BAYLOR

PROBABLE STARTING LINEUP

| LE | LT | LG | C | RG | RT | RE |
|-------------|--------------|-------------|---------------|-------------|---------------|--------------|
| Closs 87 | Wright 75 | Jones 67 | Huebner 55 | Stone 68 | Tinsley 78 | Nevill 80 |

FB
Mangum
41

LHB
Sims
17

RHB
Blackwood
35

SQUAD ROSTER

| | | | |
|-----------------|----------------|------------------|-----------------|
| 10 Parker, b | 36 Crews, b | 61 Hightower, g | 78 Tinsley, t |
| 11 Griffin, b | 37 Jeffrey, b | 62 Mouser, g | 80 Nevill, e |
| 12 Kimbrough, b | 40 Pierce, b | 65 Mayfield, g | 81 Keeton, e |
| 14 Shannon, b | 41 Mangum, b | 66 Reid, g | 82 Downs, e |
| 15 Johnson, b | 42 Hall, b | 67 Jones, g | 83 Dickerson, e |
| 16 Mott, b | 45 Boydston, b | 68 Stone, g | 84 Flanakin, e |
| 17 Sims, b | 46 Sahm, b | 69 Kazanas, g | 85 Riley, e |
| 25 Painter, b | 47 Gajdosik, b | 70 Massey, t | 86 Collins, e |
| 23 Fry, b | 50 Qualls, c | 71 Heironimus, t | 87 Closs, e |
| 24 Parker, b | 51 Taylor, c | 72 Weis, t | 88 Whitley, e |
| 26 Sheats, b | 53 Attaway, c | 73 Roberts, t | 89 Cook, e |
| 32 Curtis, b | 54 Cochrane, v | 74 Still, t | 90 Starr, e |
| 33 Burk, b | 55 Huebner, c | 75 Wright, t | 91 Martin, e |
| 34 McKinney, b | 57 Southern, c | 76 Baughman, t | Jff2 Pt |
| 35 Blackwood, b | 60 Hubbard, g | 77 Forren, t | |

OFFICIALS

Referee—W. G. Bruner (Mercer)
Umpire—Maxey T. Hart (Texas)
Head linesman—Bob King (Missouri)
Field judge—Charley Swartz (Rice)
Clock Operator—Joe Riley (Alabama)



TULANE STADIUM



THIS PROGRAM PRINTED
by
TULANE UNIVERSITY PRESS
Printing Department of Tulane University

CAMPUS PRINTERS
BASEMENT PHONE
GIBSON HALL WALNUT 1286

HAUSMANN
NEW ORLEANS'
LEADING JEWELERS
Special Department for College
and
Fraternal Jewelry

QUALITY PURITY FLAVOR



It's Delicious

It's Nutritious

*Seen at all
the games . . .*

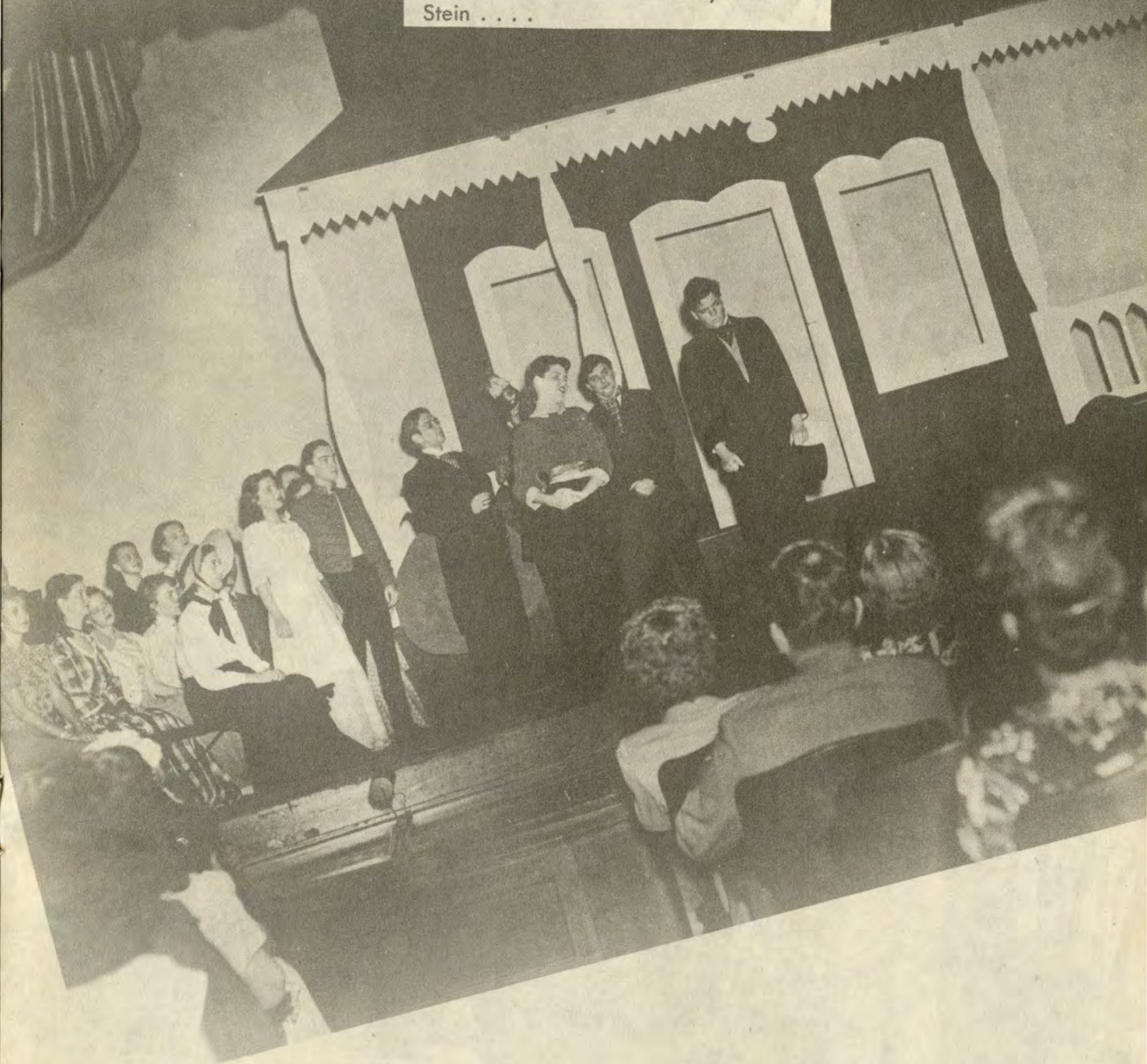


**CLOTHES FROM
MAYER ISRAEL'S . . .**

for over half a century the
store of fine fashions for
men, women and children.

MAYER ISRAEL'S

. . . choral groups on parade, as here
in "The Mother Of Us All" by Gertrude
Stein . . .



TULANE STADIUM



. . . . ROTC students at ease (top) and Latin American students holding a special meeting (below)





. . . . a Newcomb student working in
the college's art school



. . . . and of course the end of four years' work, play, and study—commencement,

TULANE CHEERS

HULLABALOO

Hu- la- ba- loo Ray-Ray!
Hu- la- ba- loo Ray-Ray!
Hoo-Ray! Hoo-Ray!
Vars, Vars, tee-ay!
Tee-ay! Tee-ay!
Vars, Vars, tee-ay!
Tulane!

KILL

Scream! (Drawn out)
Kill! Kill! Kill!

T. U. YELL

T - U
L - A
Nnnnn E!
Fight! Fight! Fight!

GREEN WAVE

R-o-o-ll On!
Gre-e-e-n Wave!
R-o-o-ll On!
Gre-e-e-n Wave!
R-o-o-ll On!
Gre-e-e-n Wave!

LOCOMOTIVE

T- U- L- A- N- E-
T- U- L- A- N- E-
T- U- L- A- N- E-
RAH!
T - u - u - LANE!

YEA, TEAM

Yea Team Fight!
Yea Team Fight!
Yea Team!
Ray Team!
FIGHT! FIGHT!
FIGHT!

VICTORY

V-I-C-T-O-R-Y
Victory! Victory!
That's our cry.

ECHO

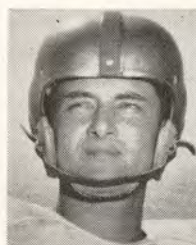
| | |
|------------------|---|
| Cheerleaders: | T |
| Crowd: | T |
| Cheerleaders: | U |
| Crowd: | U |
| Cheerleaders: | L |
| Crowd: | L |
| Cheerleaders: | A |
| Crowd: | A |
| Cheerleaders: | N |
| Crowd: | N |
| Cheerleaders: | E |
| Crowd: | E |
| All: T-u-u-lane! | |
| FIGHT! | |



The Official Watch for Timing All Tulane Games is a Longines—"The World's Most Honored Watch"



Bob Woodruff
coach



Keith Hightower
guard



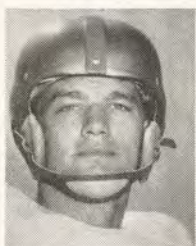
James Parker
back



Weldon Forren
tackle



Cecil Massey
tackle



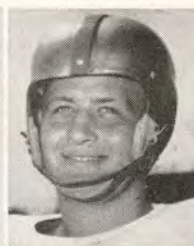
Danny Cochrane
center



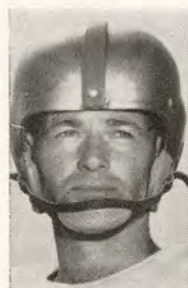
Ben Sheats
back



Johnny Curtis
back



Morris Weis
tackle



Omar Keeton
end



Buddy Attaway
center



Nick Kazanas
guard



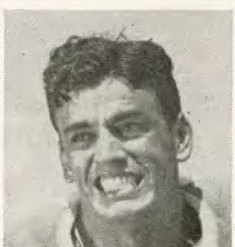
Walter Still
tackle

BAYLOR

| No. | Name and Position | Age | Ht. | Wt. | Hometown |
|-----|--------------------|-----|------|-----|----------------|
| 10 | James Parker, b | 19 | 5-9 | 155 | Corpus Christi |
| 11 | Bobby Griffin, b | 20 | 6- | 170 | Houston |
| 12 | Billy Kimbrough, b | 20 | 5-10 | 175 | Beaumont |
| 14 | Frank Shannon, b | 22 | 5-9 | 165 | Wharton |
| 15 | Mitford Johnson, b | 22 | 5-11 | 155 | Crisco |
| 16 | James Mott, b | 20 | 6- | 170 | Lufkin |
| 17 | George Sims, b | 21 | 5-11 | 170 | Seymour |
| 25 | Ray Painter, b | 20 | 5-11 | 160 | Gatesville |
| 23 | Hayden Fry, b | 19 | 6-2 | 170 | Odessa |
| 24 | Dudley Parker, b | 23 | 5-10 | 170 | Corpus Christi |
| 26 | Ben Dean Sheats, b | 21 | 5-10 | 170 | Dallas |
| 32 | John Curtis, b | 22 | 5-11 | 165 | Waco |
| 33 | Adrian Burk, b | 20 | 6-2 | 185 | Henderson |
| 34 | Frank McKinney, b | 23 | 6-1 | 175 | Lufkin |
| 35 | Lyle Blackwood, b | 20 | 5-8 | 165 | San Antonio |
| 36 | Cal Crews, b | 24 | 5-9 | 165 | Karnes City |
| 37 | James Jeffrey, b | 19 | 5-11 | 175 | Corpus Christi |
| 40 | Sammy Pierce, b | 22 | 5-10 | 220 | Vernon |
| 41 | Jerry Mangum, b | 20 | 6- | 190 | San Antonio |
| 42 | Ben Hall, b | 24 | 5-11 | 200 | Kaufman |
| 45 | Frank Boydston, b | 20 | 5-11 | 195 | Oklahoma City |
| 46 | Jerry Sahm, b | 20 | 5-1 | 175 | San Antonio |
| 47 | Louis Gajdosik, b | 24 | 5-9 | 190 | Dayton |
| 50 | Bucky Qualls, c | 20 | 6-2 | 195 | Hillsboro |
| 51 | Glen Taylor, c | 19 | 5-10 | 185 | Odessa |
| 53 | Harold Attaway, c | 19 | 6- | 195 | Longview |
| 54 | Danny Cochrane, c | 19 | 6-2 | 195 | Galveston |
| 55 | Eugene Huebner, c | 24 | 6-4 | 225 | San Antonio |
| 57 | Jack Southern, c | 20 | 6- | 185 | San Antonio |



Gene Huebner
center



Jasper Flanakin
end



Sammy Pierce
back



Glen Taylor
center



Frank Boydston
back



Harold Riley
end



Wesley Roberts
tackle



Clark Heironimus
tackle



Ray Painter
back



Charles Stone
guard



J. R. Closs
end



G. M. Nevill
end



George Sims
back



Frank McKinney
back



Bentley Jones
guard



Don Mouser
guard



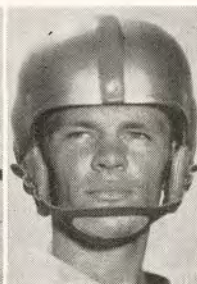
James Jeffrey
back

BAYLOR

| No. | Name and Position | Age | Ht. | Wt. | Hometown |
|-----|---------------------|-----|------|-----|---------------|
| 60 | Ken Hubbard, g | 20 | 6-1 | 210 | San Antonio |
| 61 | Keith Hightower, g | 22 | 6- | 185 | Henderson |
| 62 | Donald Mouser, g | 21 | 6-2 | 195 | Vernon |
| 65 | Ray Mayfield, g | 22 | 5-11 | 195 | Galena Park |
| 66 | Bryce Reid, g | 20 | 6-1 | 195 | Gonzales |
| 67 | Bentley Jones, g | 24 | 5-9 | 175 | Cleburne |
| 68 | Charles Stone, g | 22 | 6- | 180 | Bryan |
| 69 | Nick Kazanas, g | 19 | 5-11 | 175 | Waco |
| 70 | Cecil Massey, t | 26 | 6- | 220 | Stamford |
| 71 | Clark Heironimus, t | 24 | 6-1 | 200 | Denison |
| 72 | Morris Weis, t | 19 | 5-11 | 215 | Marshall |
| 73 | Wesley Roberts, t | 22 | 6-4 | 215 | Andrews |
| 74 | Walter Still, t | 21 | 6-1 | 200 | Lufkin |
| 75 | Rupert Wright, t | 20 | 6-2 | 200 | Goose Creek |
| 76 | A. D. Baughman, t | 24 | 6- | 230 | Houston |
| 77 | Weldon Forren, t | 19 | 5-11 | 200 | San Benito |
| 78 | R. P. Tinsley, t | 24 | 6-4 | 225 | West Columbia |
| 80 | G. M. Nevill, e | 23 | 6-2 | 190 | Bryan |
| 81 | Omar Keeton, e | 22 | 6-1 | 170 | Hillsboro |
| 82 | Terry Downs, e | 20 | 6-3 | 185 | San Antonio |
| 83 | Henry Dickerson, e | 21 | 6- | 175 | Dallas |
| 84 | Jasper Flanakin, e | 24 | 6- | 200 | Silsbee |
| 85 | Harold Riley, e | 20 | 6-2 | 185 | Ft. Worth |
| 86 | Dan Collins, e | 21 | 6-1 | 170 | Crisco |
| 87 | J. R. Closs, e | 22 | 5-11 | 170 | Bryan |
| 88 | Robert Whitley, e | 25 | 6-2 | 200 | Clifton |
| 89 | George Cook, e | 22 | 6-2 | 187 | Odessa |
| 90 | Ed Starr, e | 24 | 6-2 | 175 | Waco |
| 91 | A. J. Martin, e | 22 | 5-11 | 175 | San Antonio |



Frank Shannon
back



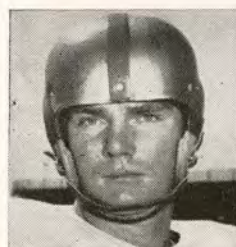
Terry Downs
end



A. D. Baughman
tackle



Bryce Reid
guard



Ken Hubbard
guard



Mitford Johnson
back



Bucky Qualls
center



James Mott
back



Jerry Sahn
back

At the Game ...



IT'S

Porter's

EVERY TIME!

More and more distinguished New Orleans men are buying their clothes at Porter's!
Why — simply because Porter's selects the latest styles for distinguished men.

Porter's

Carondelet Corner Gravier

WSMB

1350 Kilocycles



NEW ORLEANS' OUTLET FOR
THE N B C NETWORK

SCHEDULES

TULANE

21 Alabama 14.
7 Georgia Tech 13.
14 South Carolina 0.
20 Ole Miss 7.
21 Auburn 6.
9 Miss. State 0.
28 V. M. I. 7.
Nov. 13—Baylor—New Orleans
Nov. 20—Cincinnati—Cincinnati
Nov. 27—L.S.U.—Baton Rouge

BAYLOR

7 Miss. State 7.
23 Arkansas 7.
13 Texas Tech 0.
20 Texas A&M 14.
6 T. C. U. 3.
10 Texas 13.
Nov. 13—Tulane—New Orleans
Nov. 20—S.M.U.—Dallas
Nov. 27—Rice—Houston

Time out... Have a Coke



TULANE SONGS



ALMA MATER

We praise thee for thy past, O Alma Mater!
Thy hand hath done its work full faithfully;
The incense of thy spirit hath ascended
And filled America from sea to sea!

We praise thee for thy present, Alma Mater!
Today thy children look to thee for bread!
Thou leadeast them to dreams and actions
splendid!
The hunger of their souls is richly fed!

We praise thee for thy future, Alma Mater!
The vista of its glory gleameth far!
We shall ever be part of thee, great Mother!
There thou will be where e'er thy children are!

Chorus

Olive Green and Blue, we love thee.
Pledge we now our fealty true.
Where the trees are ever greenest,
Where the skies are purest blue.
Hear us now, O Tulane, hear us.
As we proudly sing to thee!
Take from us our heart's devotion!
Thine we are, and thine shall be!

ROLL ON, TULANE

Here's a song for the Olive and the Blue.
Here's a cheer for the team that's tried and true.
Here a pledge of loyalty to thee,
Oh, Tulane Varsity.
Here's to the Greenbacks that never will say die,
And here's to the hearts that are true
To the men of Tulane, who are fighting for her
name,
For the Olive and the Blue.

Chorus

Roll, Green Wave,
Roll them down the field.
Hold, Green Wave,
That line must never yield.
When those Greenbacks charge through the line
They're bound for victory.
Hail, Green Wave,
For you we give a cheer.
Hail Green Wave,
For you we have no fear.
So ev'ry man in ev'ry play,
And then we'll win that game today.
Hurrah for Old Tulane.

TULANE FIGHT SONG

Green Wave, Green Wave,
Hats off to thee,
Fight, fight, fight for our victory
Shouts to the skies
The Green Wave war cry.
The bravest we'll defy.
Hold that line for Olive and Blue
We will cheer for you.
So fight, fight, Old Green Wave
Right on to victory.



FAMOUS FOR FINE FOOD and DRINK

TONIGHT—enjoy
specialties of these
noted restaurants:

ANTOINE'S

713 St. Louis St.

ARNAUD'S

813 Bienville St.

BROUSSARD'S

819 Conti St.

KOLB'S

125 St. Charles St.

LA LOUISIANE

725 Iberville St.

PIGSKIN ROUNDUP

Tennessee vs. Mississippi—The Volunteers should put down this Rebel uprising in Ed Crump's backyard but it won't be easy.

Arkansas vs. S. M. U.—Walker in a walk-away.

Army vs. Penn—The Black Knights of the Hudson are too well armored at all positions for the Philadelphians to penetrate.

Alabama vs. Georgia Tech—Remember last year? It couldn't happen but it did—'Bama 14, Tech 7. This year, it can't happen and it won't.

Auburn vs. Georgia—A semi-final scrimmage for the Bulldogs in preparation for the Engineers.

Michigan vs. Indiana—Slaughter in the Big Nine. The Wolverines.

Notre Dame vs. Northwestern—Closer than love-birds but with different intent. The Irish in a squeak.

Texas vs. T.C.U.—The Frogs should get a Cherry greeting and that means a beating, too.

Columbia vs. Navy—For "ole Lou", a lulu. The Lions.

Minnesota vs. Iowa—March of the Mastadons. The Gophers.

QUICK LIKE—California over Washington State; Cornell to lick Dartmouth; Duke in a romp over George Washington; Brown to whip Harvard; Ohio State to humble Illinois; Mississippi State to stop L.S.U.; Missouri to stem Colorado; Oklahoma to smack Nebraska; North Carolina easily over Maryland; Purdue to lick Pittsburgh; Princeton over Yale; Texas A. and M. to top Rice; Southern Cal to lose to Washington; Oregon over U.C.L.A. and Wisconsin to bypass Marquette.

Official timing watch for the

TULANE-BAYLOR FOOTBALL GAME

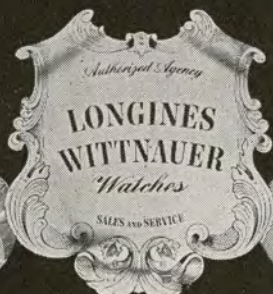
Longines

The World's Most Honored Watch

ACCEPTED AS OFFICIAL WATCH FOR TIMING CHAMPIONSHIP

SPORTS EVENTS IN ALL FIELDS ALL OVER THE WORLD


10 WORLDS FAIR GRAND PRIZES



28 GOLD MEDALS, HIGHEST ACCURACY AWARDS



SOLD BY MORE THAN 4,000 FINE JEWELERS WHO PROUDLY DISPLAY THIS EMBLEM



The Roosevelt

The Roosevelt Hotel Offers
New Orleans' Most Diversified Program
of
Music and Entertainment

in the FOUNTAIN LOUNGE

At LUNCHEON we invite you to listen to the sweet strains of the Gypsy Ensemble. For COCKTAILS and DANCING, alternating nightly from five o'clock until two the next morning is one of Latin America's noted Rhumba bands and the Society Music of two of America's outstanding combinations.

in the BLUE ROOM

Each evening, for DINNER and SUPPER DANCING, is presented one of the Nation's famous orchestras . . . Featured also in the Blue Room Floor Shows at Dinner and Supper, are celebrated stars from radio, stage and screen.

*New Orleans' most discriminating audience choose
The Roosevelt for their relaxation and entertainment*

The Roosevelt

"The Pride of the South"

only a few yards to go...



(Other Pan-Am Stations conveniently located in all parts of the City.)

Choice of Experience!



CAMELS