

SCOOP

Ding'hof'er's Sec'y Reveals All!

"I'll tell all!"

Modest little Prucilla Pimpernel, ace stenographer-secretary of Colonel Dingelhoff, football low-rating system expert and forecaster deluxe, sobbed exclusively to **THE TULANE GREENIE** today.

"Oh yeah!" responded our star reporter, in his meanest tenor.

"Well, the Colonel (Oh, he'll kill poor little me) uses this screw-ball system for figuring the standing of the football teams.

"He takes the programs, adds the weights of the players——"

Here Prucilla shook, glanced fearfully about before continuing:

"Then he divides them by five and adds the weight of the mascot."

"Then what?" demanded our reporter.

"Why that gives him the point rating of the team!"

"That's why Kyosh out-rated Minnesota last week . . . oh it just kills me to see teams like that rated above teams like Minnesota and Tulane . . ."

Little Prucilla sobbed hysterically.

Snow started falling as she left the little rose-entwined cottage with hardly a wrap to protect her.

Sep 25
1937



HOLMES Fall Showing

AND

SALE

Fall Suits—Topcoats—Tuxedos

\$23.75

SUITS—every style, every size, every model and color that you could want! Double-breasted, single-breasted, plain back and sports back models! Styles for youths and men.

TOPCOATS—in just the right weight for New Orleans' fall and winter. All-wool, fleecy models in plaids, checks, herringbone weaves and solid colors. With regulation or raglan sleeves.

TUXEDOS—that are up-to-the minute in style. Double- or single-breasted models, with grosgrain lapels. Come in now and make your selection while our stocks are complete.

*HOLMES MEN'S STORE—Use Separate Entrance on Bourbon
Street or Enter from Main Store*

D. H. HOLMES CO.
LIMITED



“He says ‘Godchaux’s has the Clothes’!”



the New Manley Sportswear Shop

FIFTH FLOOR

Here is a shop for women to revel in. Row upon row of the very finest of garments for women who prefer the tailored type of ensemble. You'll find skirts from Scotland, made of rich imported wools. Sweaters of fleecy Kashmir in brilliant colors, ensembles of corduroy after the California trend toward casual youthfulness. There are also distinguished dresses, classically tailored in the English manner . . . as well as active sports apparel.



the New Beauty Salon

THIRD FLOOR

You can make no better investment than in retaining or regaining your youth. Here amid luxurious surroundings in the loveliest Beauty Salon you have ever seen . . . you will relax, knowing that the finest operators, using the latest ideas and equipment will make you more beautiful, more completely charming from top to toe. Prices are moderate.



Godechaux's

The Greenie

Vol. 7 SEPTEMBER 25, 1937 No. 1

HORACE RENEGAR - - - Editor

Official Souvenir Football Program of Tulane University, Published for Each Home Game

CONTENTS

Editorials	5
Clemson Pictures	6
President Harris of Tulane (picture) . . .	9
Tulane Squad Picture	10
Tulane Pictures	11
Southeastern Conference Map	12
Campus Camera (16 page section) . .	13-37
The Line-ups	Center
Cartoon	38
Football Rules Feature	41
Tulane Pictures	43
The Rosters	44

CAMPUS CAMERA

Through the co-operation and sponsorship of William G. Zetzmman, president of the Zetz 7-Up Bottling Company, we are today presenting a new football program feature supplement which promises to please all fans.

Portraying campus life and football in full page pictures, CAMPUS CAMERA reflects the vibrant force of the game in a style which will appeal to everyone with its freshness. The supplement is entirely new for each game, new pictures and new subject matter.

We join with Mr. Zetzmman in hoping you'll like CAMPUS CAMERA.

BOWL TALK

Colgate is being touted in the Buffalo Times as a possible leading candidate for a New Year's Day Bowl game.

Under the three column caption "Colgate Eastern Possibility for Rose Bowl Invitation," the story points out that the Red Raiders lost but two men from the 1936 team.

All of which is most interesting since the Green Wave has an October 16 engagement with affable Andy Kerr's Raiders at Buffalo.

* * *

The same issue of the paper carries a few interesting remarks credited to Dave West, one time Colgate tackle and a mighty good one, who is now living in Buffalo.

Columnist Bill Abbott says that Dave is busy advising friends to "get down" on Colgate to beat Tulane.

* * *

It's too early for the Greenies to think of Colgate. They have the Royal Tigers of Clemson and the plain but ever stubborn Tigers of Auburn to think about for the time being.

The Auburn Tigers (or Plainsmen as you prefer) come to the Green Wave stadium next Saturday afternoon. Reports are to the effect that Coach Johnny Meagher's team will be perhaps a bit stronger than in 1936, when it was one of the nation's finest.

Back in the Spring some folks thought the loss of 15 or 16 lettermen would "soften" the Plainsmen up a bit this year. Those familiar with Auburn football tradition knew better.

Clemson

TIGERS



LOYELL BRYANT
Back

~



TOM
McCONNELL
End

~



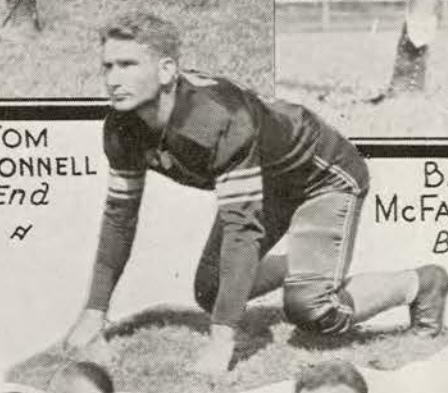
BANKS
McFADDEN
Back

~



CAPTAIN
HAROLD
LEWIS
Center

~



CURTISS
PENNINGTON
Tackle

~



BILL BRYANT ~ Guard



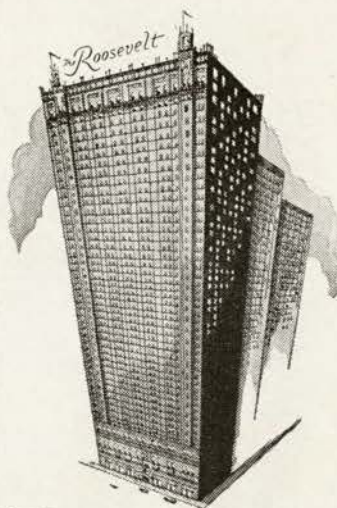
BEN PEARSON
Back

~



RALPH SIMMONS ~ Guard

SEYMOUR WEISS
President and Managing
Director



Famous FOR NEW ORLEANS Foods

Enjoy the world famous Creole food that is to be had only in old New Orleans.

Here at the Roosevelt you will find Creole food prepared from recipes handed down by famed chefs from generation to generation; and service truly distinctive of New Orleans and the South.

COFFEE SHOP

for Breakfast—Luncheon—Dinner

FOUNTAIN TERRACE

for Luncheon and Cocktails

BLUE ROOM

for Dinner—Supper

Air Conditioned Rooms at Low Cost

*Gas. "Pat" O'Shaughnessy
Mgr.*

750 ROOMS
WITH BATHS

350
UP



The Roosevelt

"Pride of the South"

ALSO OPERATING

HOTEL NEW ORLEANS

Just two blocks from the Shopping, Theatre, Business and Financial Districts.

275 Outside Rooms with Bath—Rates from \$2.00

Air conditioned guest rooms—Lobby—Dining room

GEORGE DAWSON, Manager

One of
America's Newest and Smartest Creations
in
Dinner and Supper Rooms



FEATURING

LEE SHELLEY

And His Sensational Band

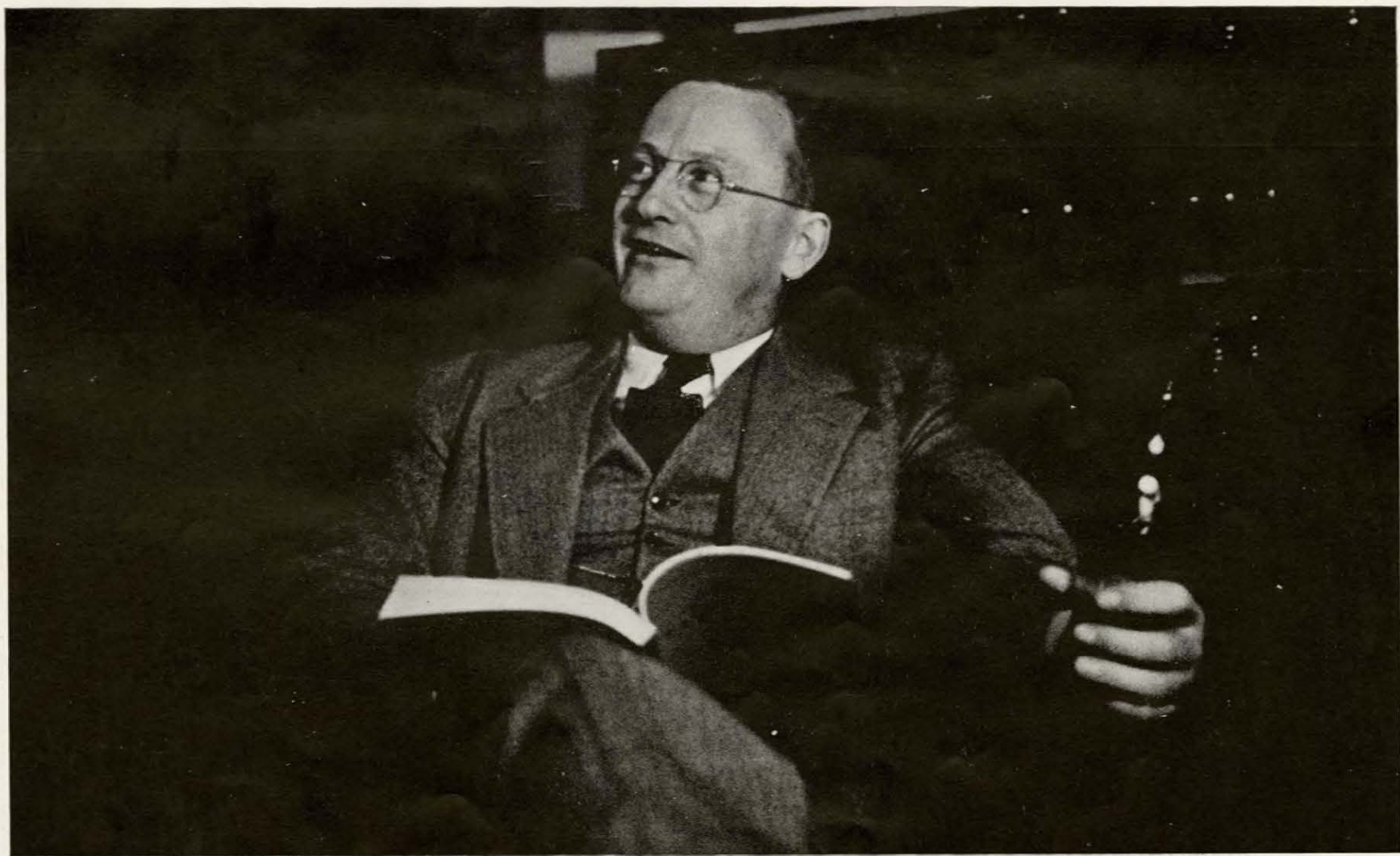
**Rodrigo and Francine
Clare and Sanna Sisters**

**Sunny O'Dea
Nita Cort**

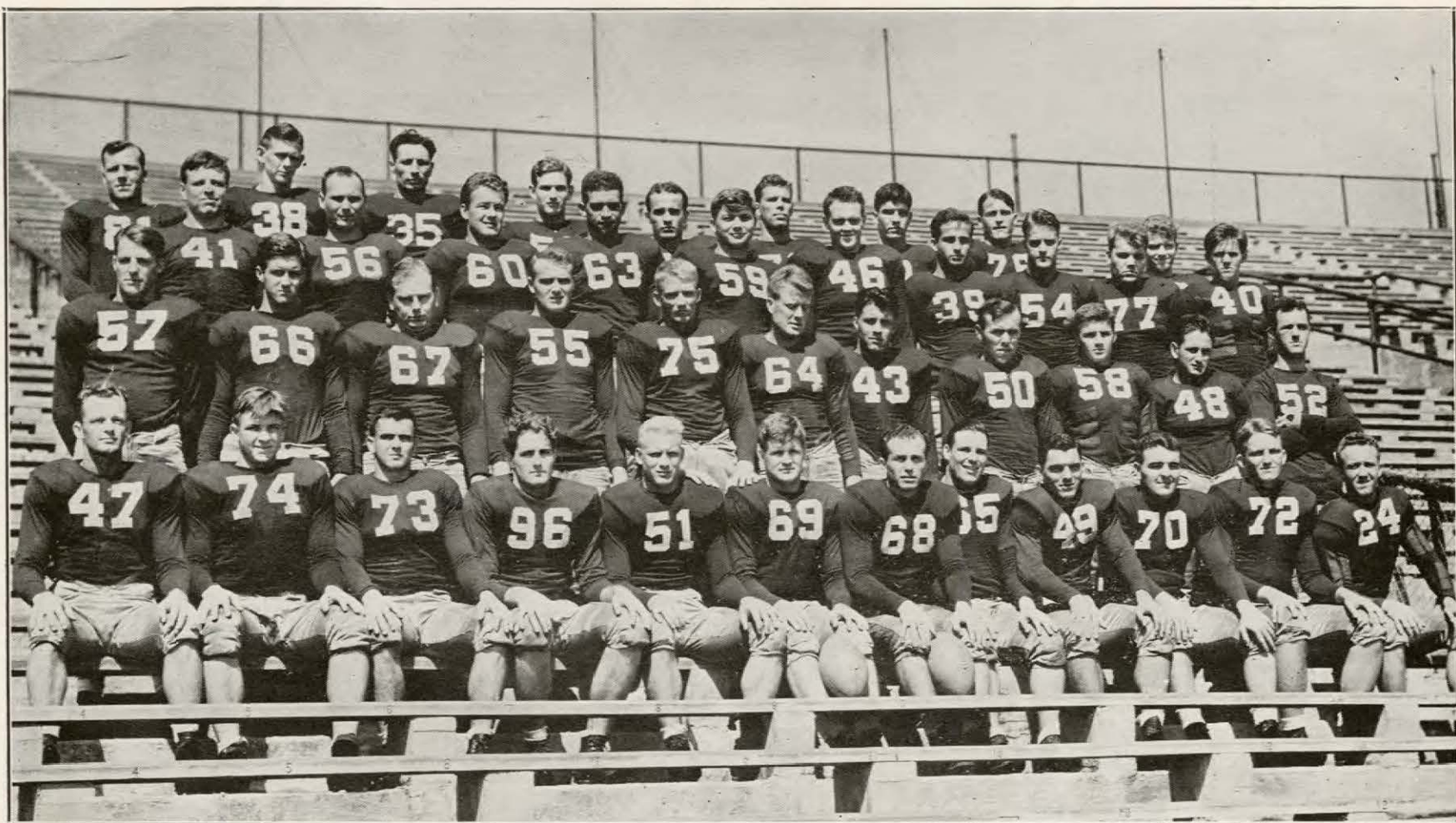
DINNER DANCING
6 to 9 — SHOW 8 O'clock.

SUPPER DANCING
10 to 2 — SHOW 12:15 O'clock

PHONE MAIN 3920 FOR RESERVATIONS



DR. RUFUS CARROLLTON HARRIS became 10th president of Tulane University June 9. Formerly dean of the college of law at Tulane, he gained a national reputation as a legal educator. He is 41 years old.



1937 TULANE GREEN WAVE

FIRST ROW, Left to Right—Bill Flowers, h. b.; Ralph Wenzel, t.; Emanuel DeFraitcs, e.; Bill Kirchem, t.; Leonard Sauer, f. b.; Co-Captain Normal Hall, g.; Co-Captain Norman Buckner, g.; Carl Goll, g.; Bill "Dub" Mattis, h. b.; Mack Avants, t.; Miller Upton, t.; Warren Brunner, h. b. SECOND ROW—Bill Payne, h. b.; Henry Flower, c.; Al Gorman, c.; Kurt Oelschlager, e.; Carl Dailey, g.; Cy Hickey, g.; Monette Butler, f. b.; Stan Nyhan, q. b.; Duke Marmillion, h. b.; George Manteris, h. b.; John Dirmann, e. THIRD ROW—John Andrews, f. b.; Ralph Bond, q. b.; Porter Tull, c.; Elson Goodell, e.; Cecil Henley, g.; Bernie Smith, c.; Ned Richardson, q. b.; Philo Smith, h. b.; Tom O'Boyle, g.; Don Overdyke, q. b. TOP ROW—Bob Dexheimer, h. b.; Buddy Banker, h. b.; Pete Dalovisio, e.; Phil Jahncke, g.; Paul Krueger, q. b.; Ray Miller, t.; Dick Corales, h. b.; Millard White, t.; Dan Watermeier, g. MISSING FROM PICTURE—Jerry Friedrichs and Pete Golomb, ends.

PULANE



LEONARD
SAUER
FULLBACKS



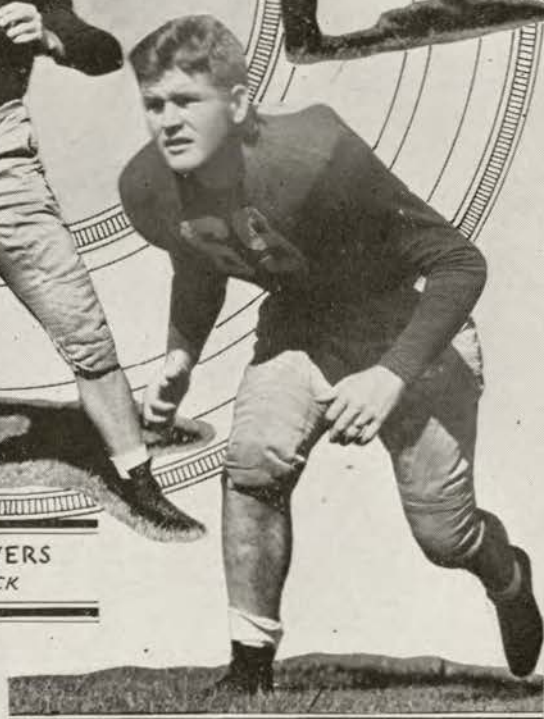
"DUB"
MATTIS
HALFBACK



BILL FLOWERS
HALFBACK

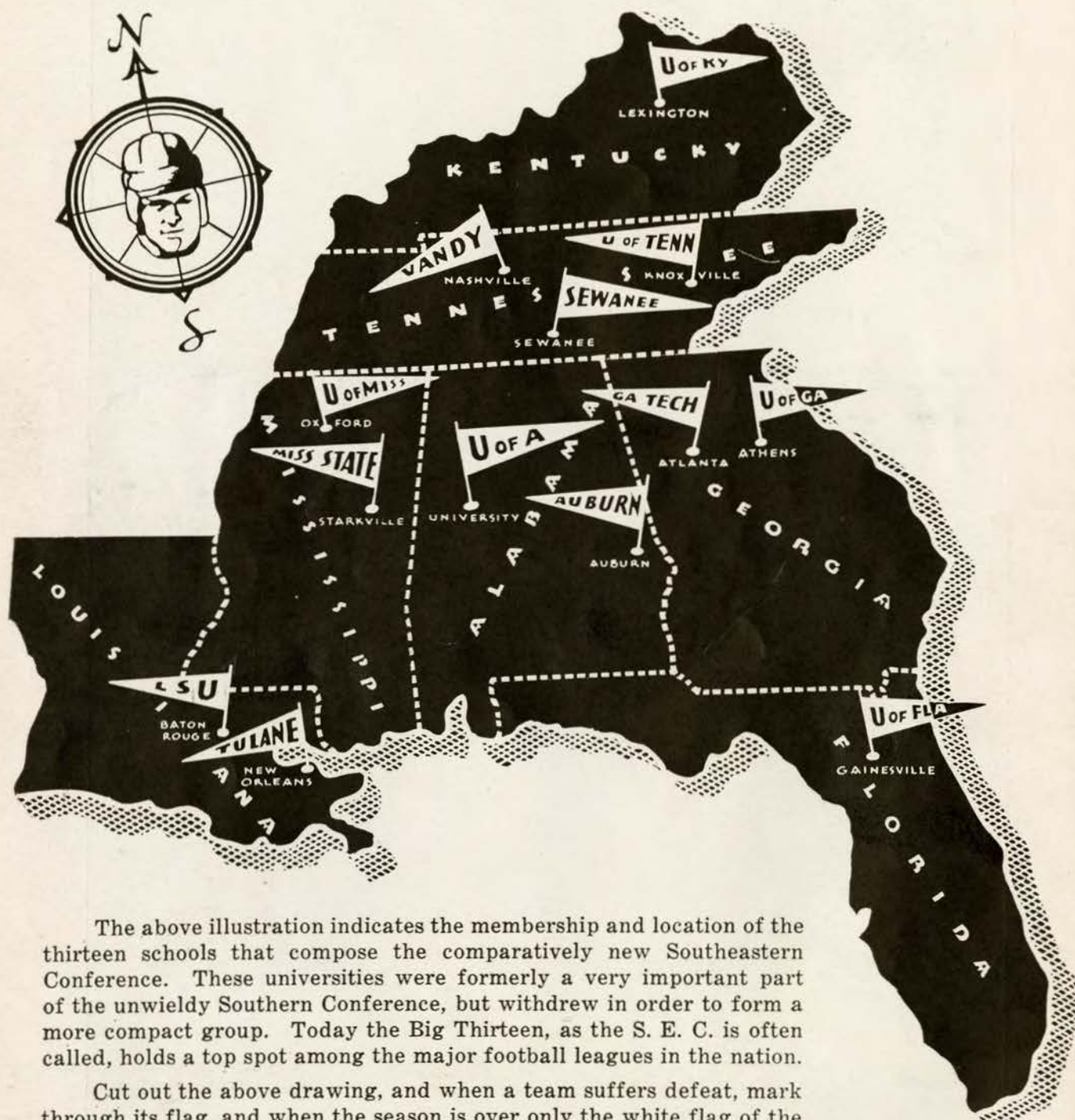


CO-CAPTAIN NORMAN BUCKNER GUARD



CO-CAPTAIN NORMAL HALL
GUARD

The Southeastern Conference



The above illustration indicates the membership and location of the thirteen schools that compose the comparatively new Southeastern Conference. These universities were formerly a very important part of the unwieldy Southern Conference, but withdrew in order to form a more compact group. Today the Big Thirteen, as the S. E. C. is often called, holds a top spot among the major football leagues in the nation.

Cut out the above drawing, and when a team suffers defeat, mark through its flag, and when the season is over only the white flag of the undefeated teams will remain — if any team goes through without a reverse this year.

*The All-American
THIRST QUENCHER*



Presents



CAMPUS CAMERA





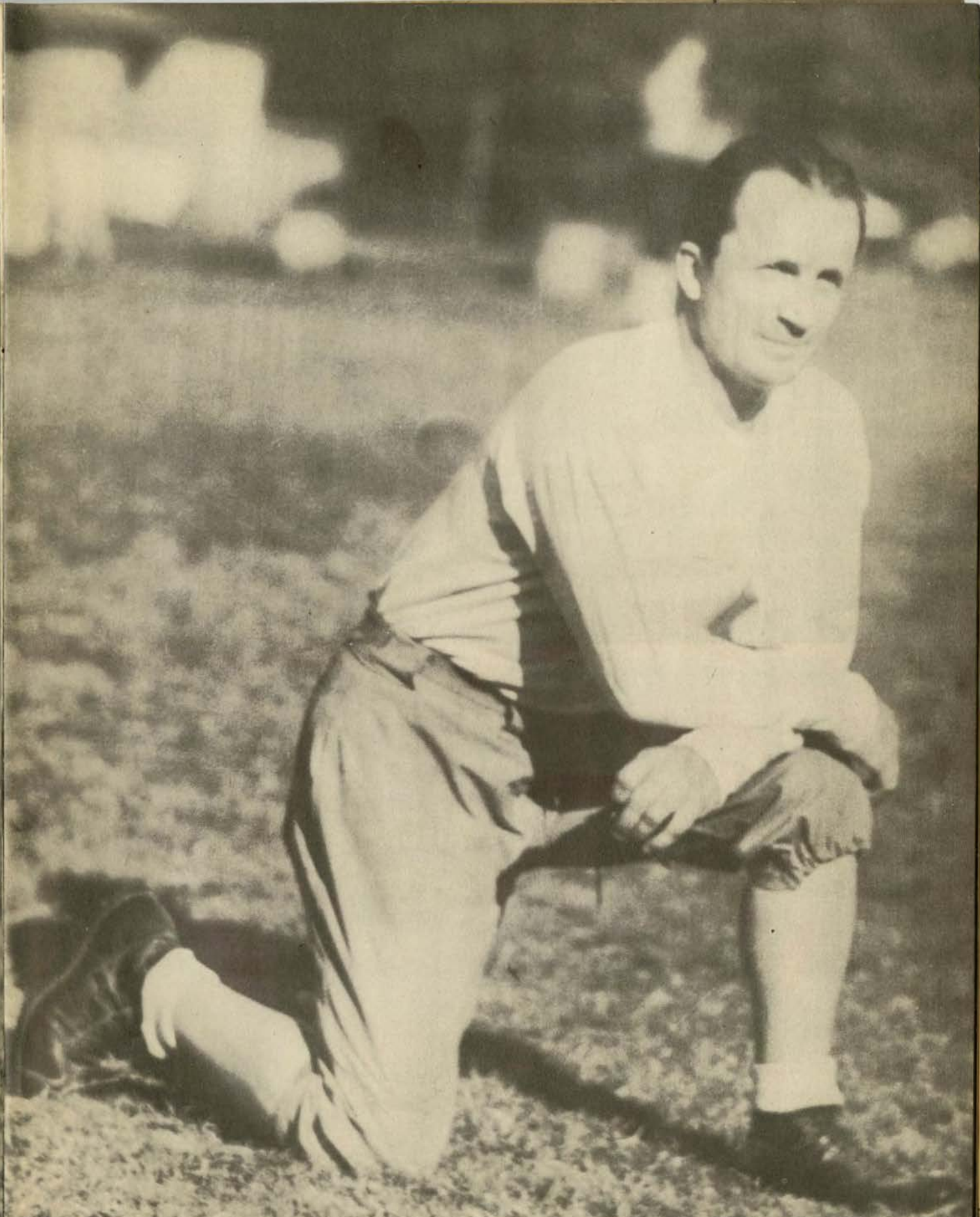
"Moon" Mullins—Florida Back



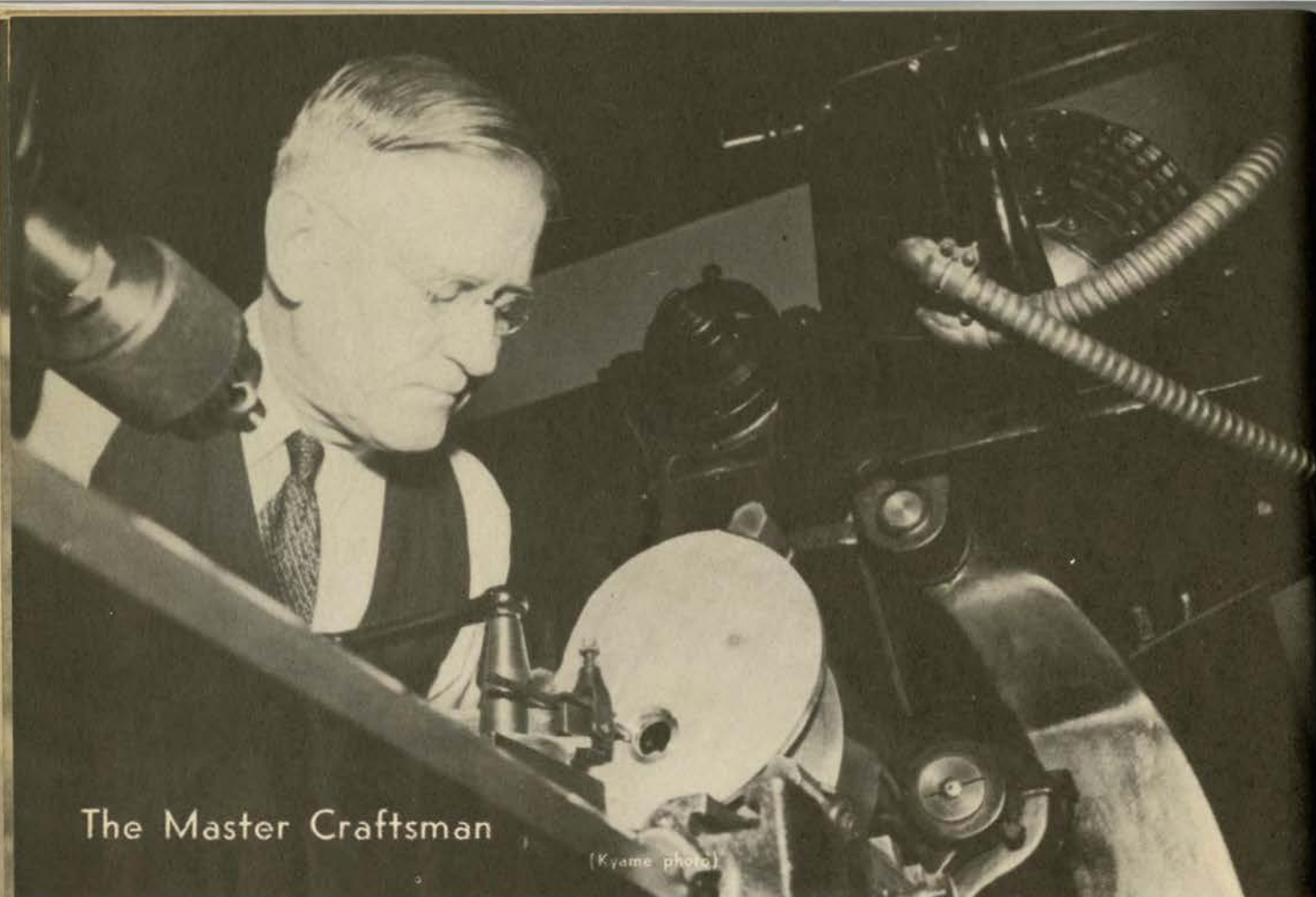
Lou Young—Georgia Quarterback



Osmo Smith—Auburn Quarterback

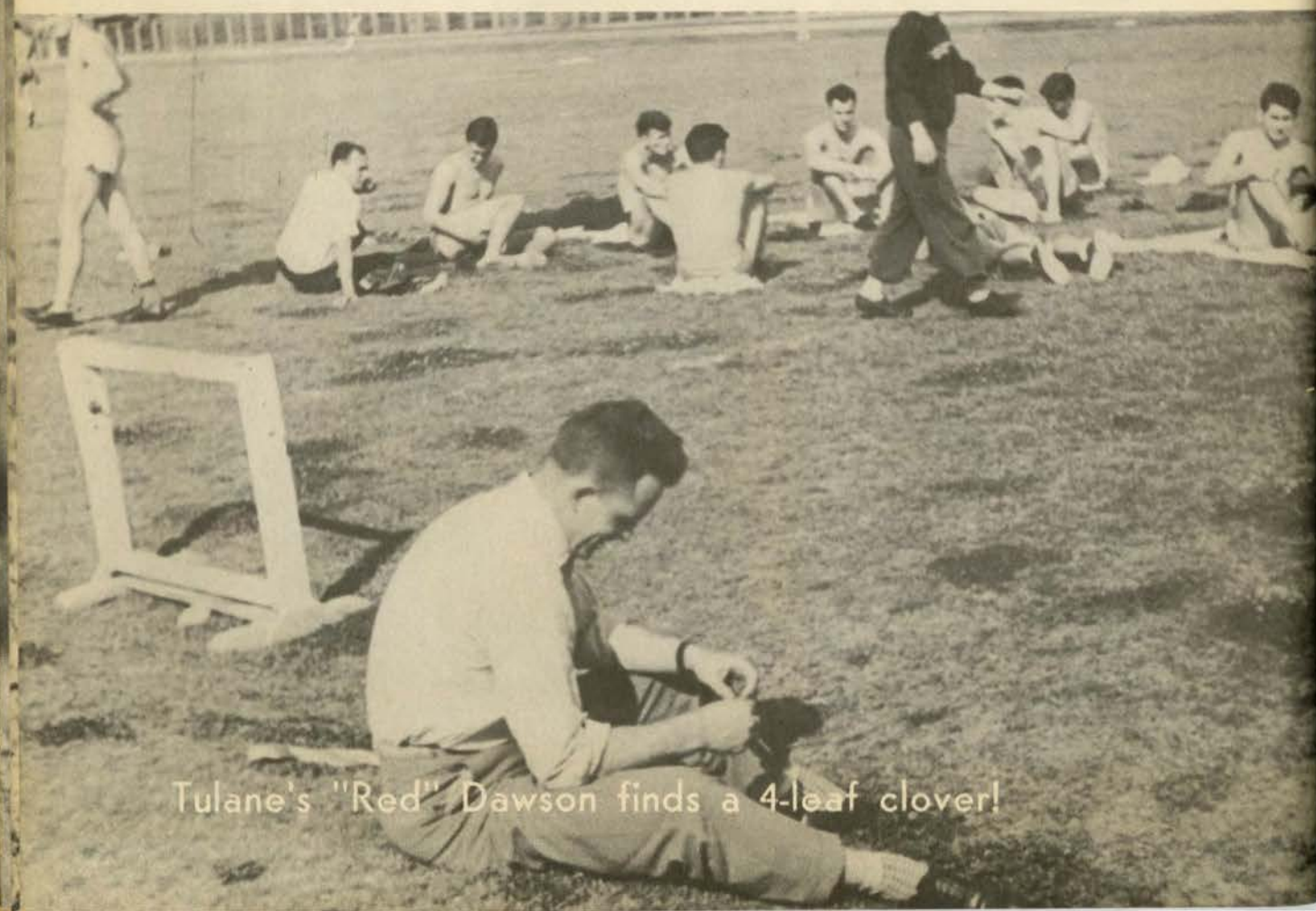


Coach Jack Meagher of Auburn

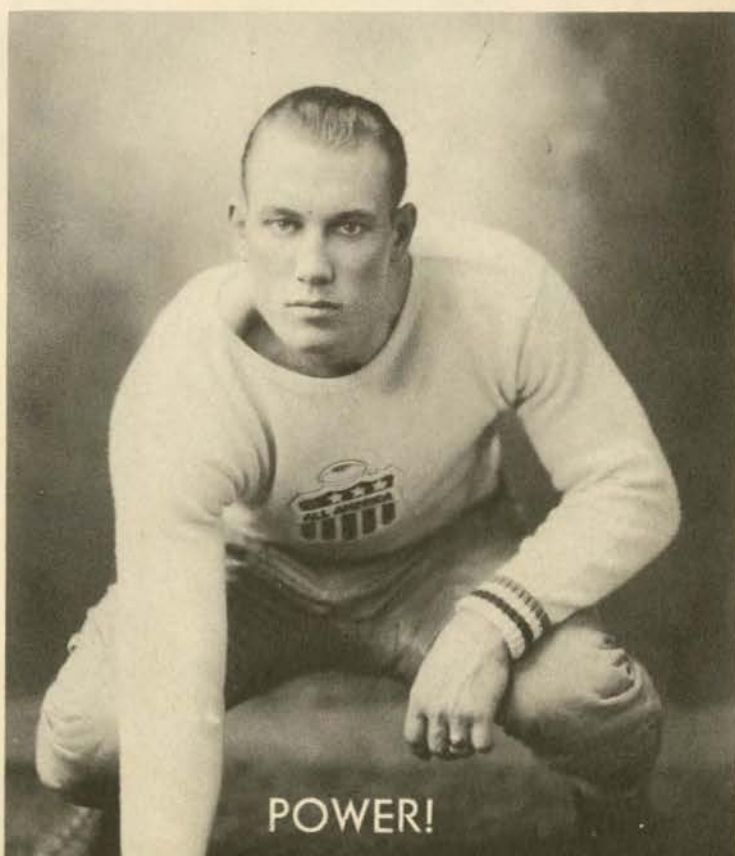
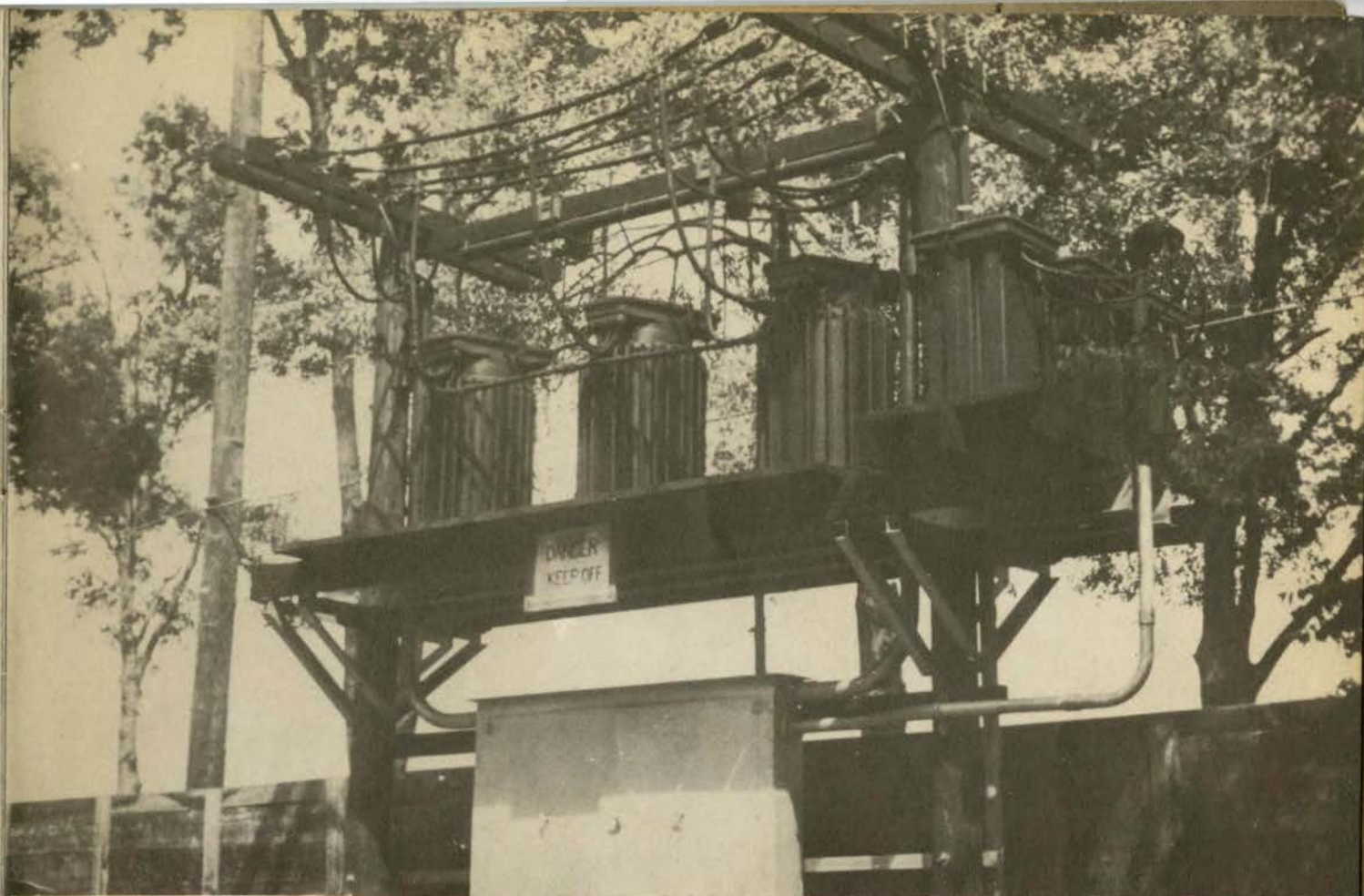


The Master Craftsman

(Kyame photo)

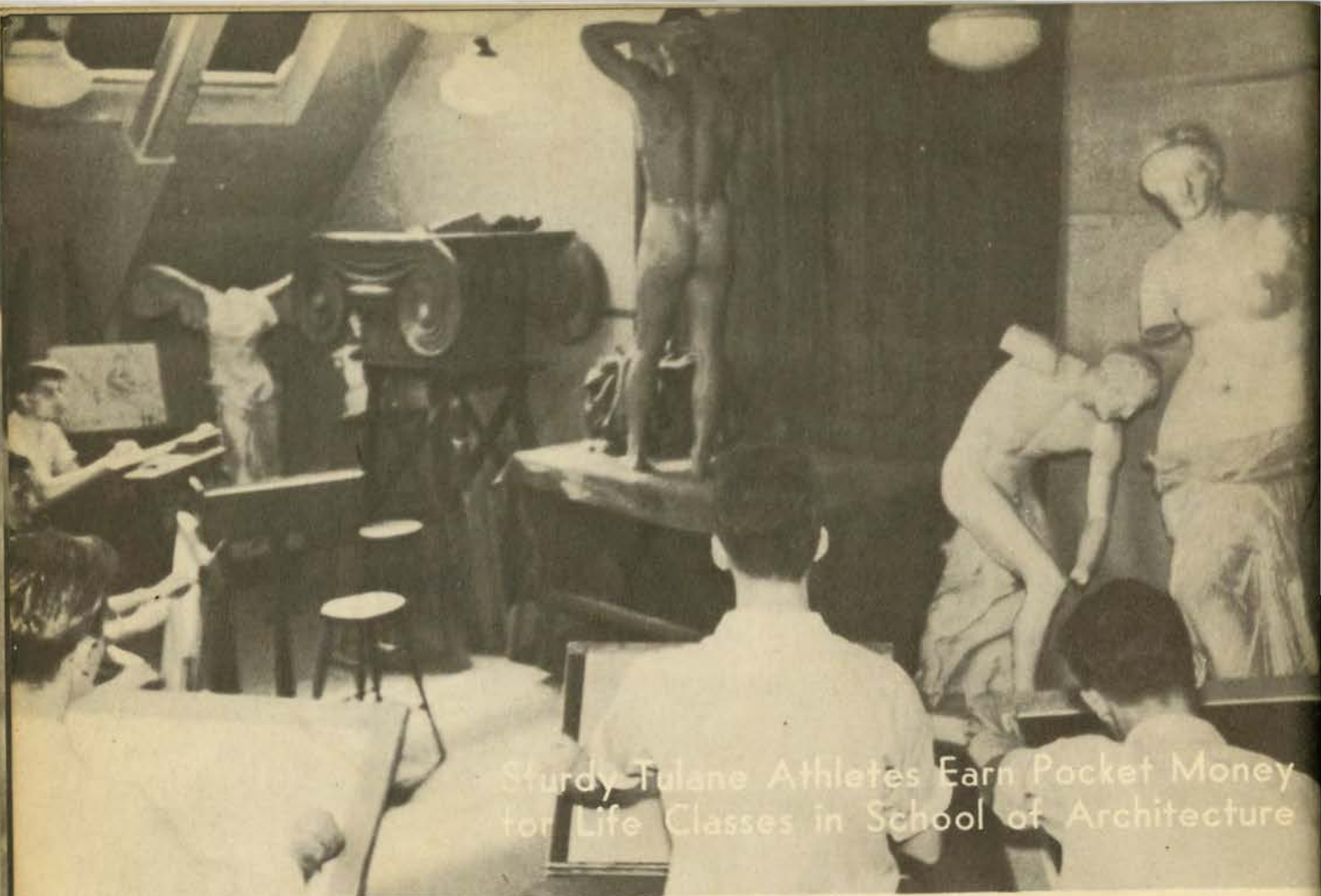


Tulane's "Red" Dawson finds a 4-leaf clover!

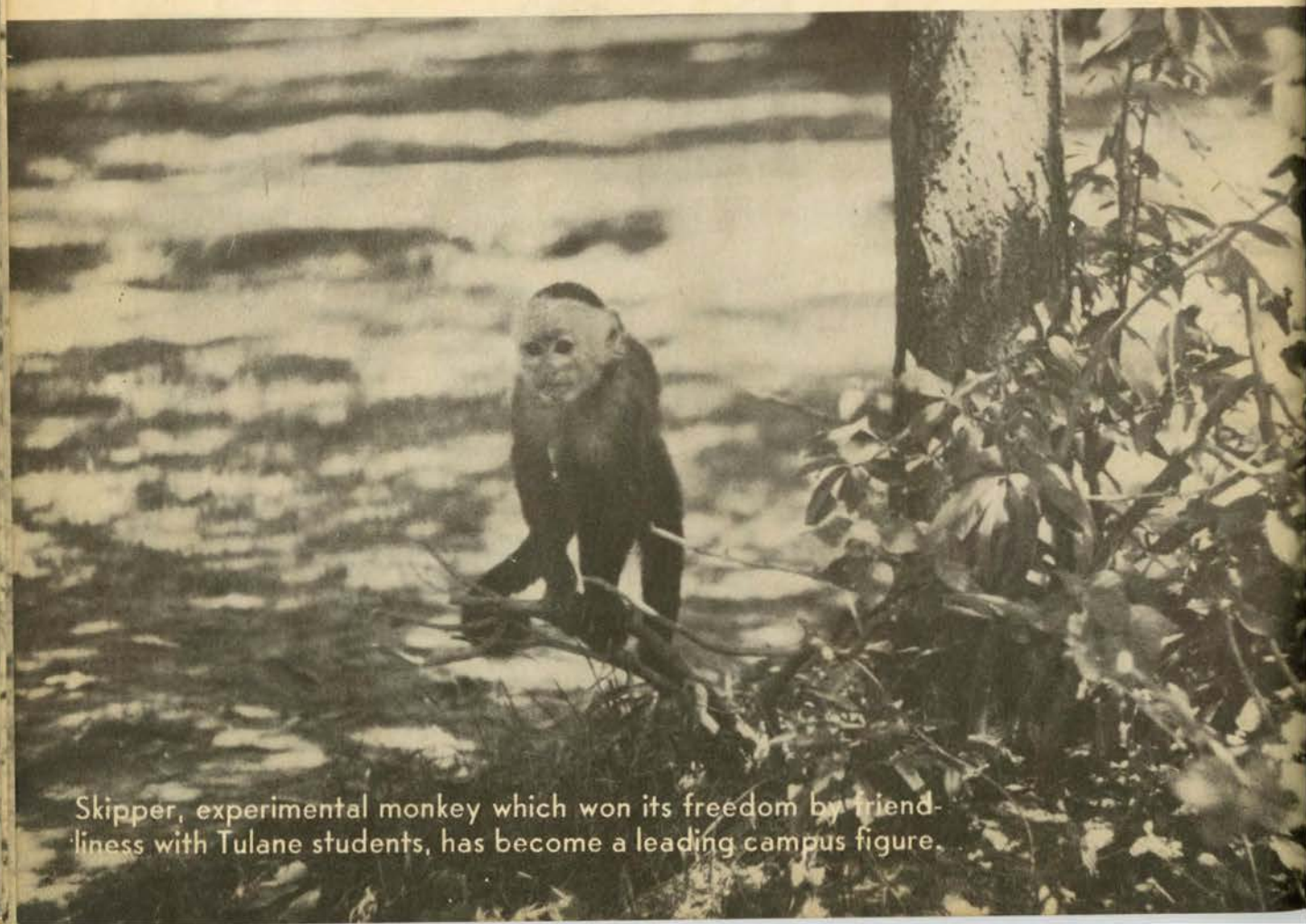


POWER!

"Bruiser" Kinard, Ole Miss' All-American tackle



Sturdy Tulane Athletes Earn Pocket Money for Life Classes in School of Architecture



Skipper, experimental monkey which won its freedom by friendliness with Tulane students, has become a leading campus figure.



YOUR LINE-UP
FOR CLOTHES
THAT DO THINGS
FOR YOU...
HOW DO YOU
STACK UP?

FACTS
OF
FASHION

MAYOR
ISRAEL'S

SEE

Mayor Daniel's
Facts of Fashion

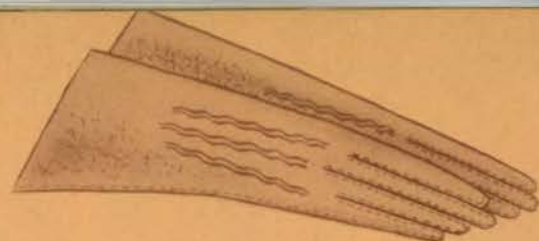


Mayer Israel's Rushka—designed by Madam Marie Alphonsine—a felt high-hat with romantic coronet of two-tone silk jersey—

15.00

Join Mayer Israel's Pigskin Parade—gauntlets like these are at their best with stadium clothes—

4.95



Mayer Israel's Fashion First—snuggle ecstatically into this genuine Leopard Cat—with Molyneaux's picture frame collar—

275.00



Mayer Israel's Cousins Footwear—New two-tone effects in warm Autumn colorings—

10.50



Mayer Israel Clothes Do Things for You



"SPALDING football equipment
certainly is popular, eh Joe?"*

THE PROOF OF
GOOD ICE CREAM

IS IN THE EATING

BROWN'S
Velvet
ICE CREAM
MADE BY NEW ORLEANS ICE CREAM CO.

SOLD EVERYWHERE

New Orleans Corrugated Box Co.
INCORPORATED

*Gaylord
Boxes*

Telephone RAYmond 4258
New Orleans, La.

AMERICA'S MOST FAMOUS
FRENCH RESTAURANT

LA LOUISIANE

Established 1881

La Louisiane is the most enjoyable place to
dine in New Orleans. For food, of course, and
first, but also for the delightful air conditioned
environment and pleasing service.

Available for—
Feature and Sorority Dances, Banquets,
and Other Social Functions.

725 IBERVILLE STREET
Telephone MAin 4664

TULANE SQUAD

LOWELL DAWSON, Coach

5 Painter, q b	57 Payne, W., h b
8 Corales, e	58 Marmillion, h b
9 Stern, t	59 Henley, g
24 Brunner, h b	60 Tull, c
35 Dalovisio, e	61 Ott, f b
38 Banker, h b	62 Goldman, g
39 Richardson, q b	63 Goodell, e
40 Overdyke, q b	64 Hickey, g
41 Andrews, f b	65 Goll, g
42 Watermier, g	66 Flower, c
43 Butler, f b	67 Gorman, c
44 Krueger, q b	68 Buckner, g
45 Moreau, e	69 Hall, g
46 Smith, B., c	70 Avants, t
47 Flowers, h b	71 Friedrichs, e
48 Manteris, h b	72 Upton, t
49 Mattis, h b	73 DeFraitcs, e
50 Nyhan, q b	74 Wenzel, t
51 Sauer, f b	75 Dailey, g
52 Dirmann, e	76 White, t
53 Jahncke, g	77 O'Boyle, g
54 Smith, P., h b	78 Golomb, e
55 Oelschlager, e	79 Miller, t
56 Bond, q b	81 Dexheimer, h b
	96 Kirchem, t

CLEMSON SQUAD

JESS NEELY, Coach

21 Magee, h b	42 Bailey, q b
22 Woods, c	43 Sanders, h b
23 Jackson, e	44 Sharpe, c
25 Moore, c	45 Segars, t
26 Wiles, f b	46 Cox, g
27 Davis, b	48 Goins, e
28 Payne, t	49 McFadden, b
29 Bryant, L., h b	50 Fox, g
31 Carlisle, e	53 Wyse, t
32 Pritchett, g	54 Willis, f b
33 Pennington, t	55 Trexler, b
34 Lewis, c	56 McConnell, e
35 Folger, h b	59 Moorer, g
37 Holman, h b	60 Bryant, W., g
38 Chovan, h b	61 Miller, t
39 Pearson, h b	62 Black, e
40 Payne, g	63 Simmons, g
41 Heatwole, q b	65 Coleman, h b



*ACE of THEM ALL
for MILDNESS and TASTE*

CLEMSON vs. TULANE

THE STARTING LINEUPS (Subject to Change by Coaches)

CLEMSON

No.	Name	Position
56	McConnell	L. E.
33	Pennington	L. T.
60	Bryant	L. G.
34	Lewis	C.
40	Payne	R. G.
53	Wyse	R. T.
48	Goins	R. E.
42	Bailey	Q. B.
39	Pearson	L. H.
54	Willis	R. H.
43	Sanders	F. B.

TULANE

Name	No.
Friedrichs	71
Kirchem	96
Buckner	68
Gorman	67
Hall	69
Miller	79
Dalovisio	35
Bond	56
Flowers	47
Mattis	49
Andrews	41

OFFICIALS

Referee—Buck Cheves (Georgia)
Umpire—W. Powell (Wisc.)
Head Linesman—G. M. "Pup" Phillips (Georgia Tech)
Field Judge—Wilson Collins (Vanderbilt)

Copyright 1937, LIGGETT & MYERS TOBACCO CO.



HAUSMANN,

INCORPORATED

NEW ORLEANS'
LEADING JEWELERS



SPECIAL DEPARTMENT FOR COLLEGE
AND FRATERNAL JEWELRY

1840—Antoine's Restaurant—1937

Now in Its 98th Year

ROY L. ALCIATORE, Prop.

717 St. Louis Street

Let me tell you, brother, when you have a famous eating place in New Orleans, it must be some place because they do know how to eat, and what to eat, and hospitality, and when you speak of Antoine's, you have reached the "Z" and "&" in alphabetical praise. Antoine's was founded in 1840 and has never had to resort to a jazz band. Imagine a restaurant existing and making a worldwide reputation on just food. My sombrero is tipped to Jules at Antoine's.

—WILL ROGERS

To Antoine's—Specially Roy, from a Gourmand to a Gourmet.
—Dolores Costello Barrymore.

May I say as everyone has said—"The finest foods in the World."
—Harry Richman.

Antoine cooks, like other cooks think they are cooking.
—Mayor Fiorello LaGuardia.

To Jules—A prince of good fellows, and the king of good cooking.
—Robert L. Ripley.

What Jules can do to oysters and fish and various other things that make up a meal is what the cooks must do to them in heaven.
—Irvin S. Cobb.

I have found a truly great restaurant in North America.
—Prince Louis Ferdinand Hohenzollern.

"Time Out"

DRINK—

Coca-Cola

TRADE MARK
REG. U.S. PAT. OFF.

PAUSE--

RELAX--

REFRESH YOURSELF



MAYER ISRAEL'S Kuppenheimer Football Fashion line-up, hits you right between the eyes—Spectator Sports Apparel in all of its casual glory—Fine worsted suitings—soft, warm, fleecy overcoat fabrics. Plaids, checks, pencil stripes; rich mixtures and smart solids. You can't miss a choice.

KUPPENHEIMER SUITS
Single and Double Breasted
47.50 to 75.00

KUPPENHEIMER OVERCOATS
Single and Double Breasted
45.00 to 68.50



Mayer Israel Clothes Do Things for You



Mayer Israel's Stetson Snap—a slick, bound edge felt that takes its place in the sun on the 50-yard line—brown and shades of steel—

7.50

Mayer Israel's Phoenix Pure Silk Socks have plenty of appeal in nonchalant stadium attitudes—and when you go wild with the crowd—

1.00



Mayer Israel's Manhattan Shirts; neat patterns with slightly longer collars for men who enjoy assembling their haberdashery for the greater pleasure of their fellow-spectators—

5.00

Mayer Israel's Neckwear—as important as the occasion—the final magic touch to a perfect ensemble. Rich, handsome silks, individual patterns —

3.50

Mayer Israel's Smith Oxford; tan calf; stadium last. Smith Smart Shoes for YOU men who want the BEST, and you can't wear out their looks—

10.00



Mayer Israel Clothes Do Things for You



Color Guards Head Review
at Mississippi State



Campus in the Winter

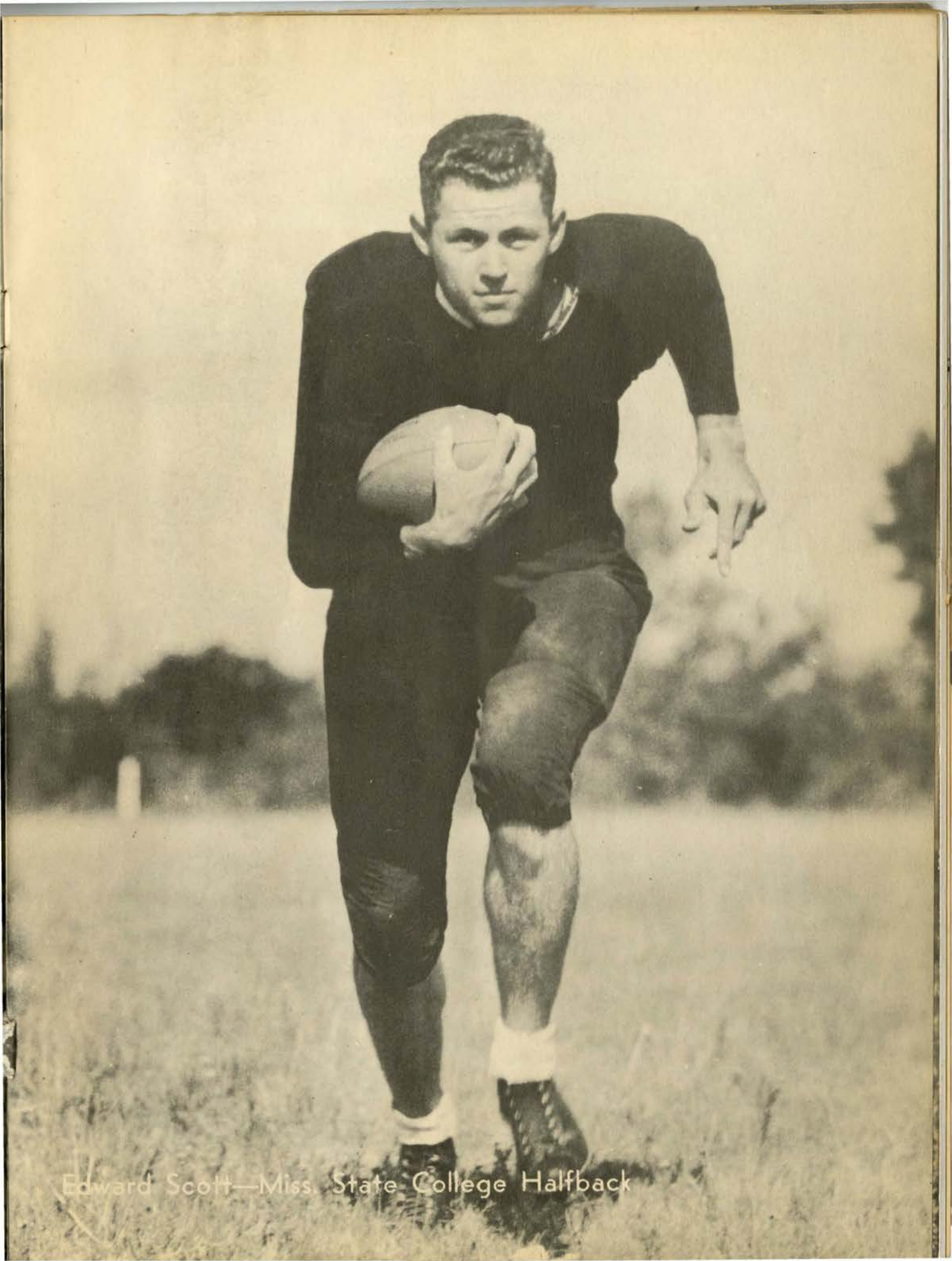


"Dub" Mattis, Tulane Halfback

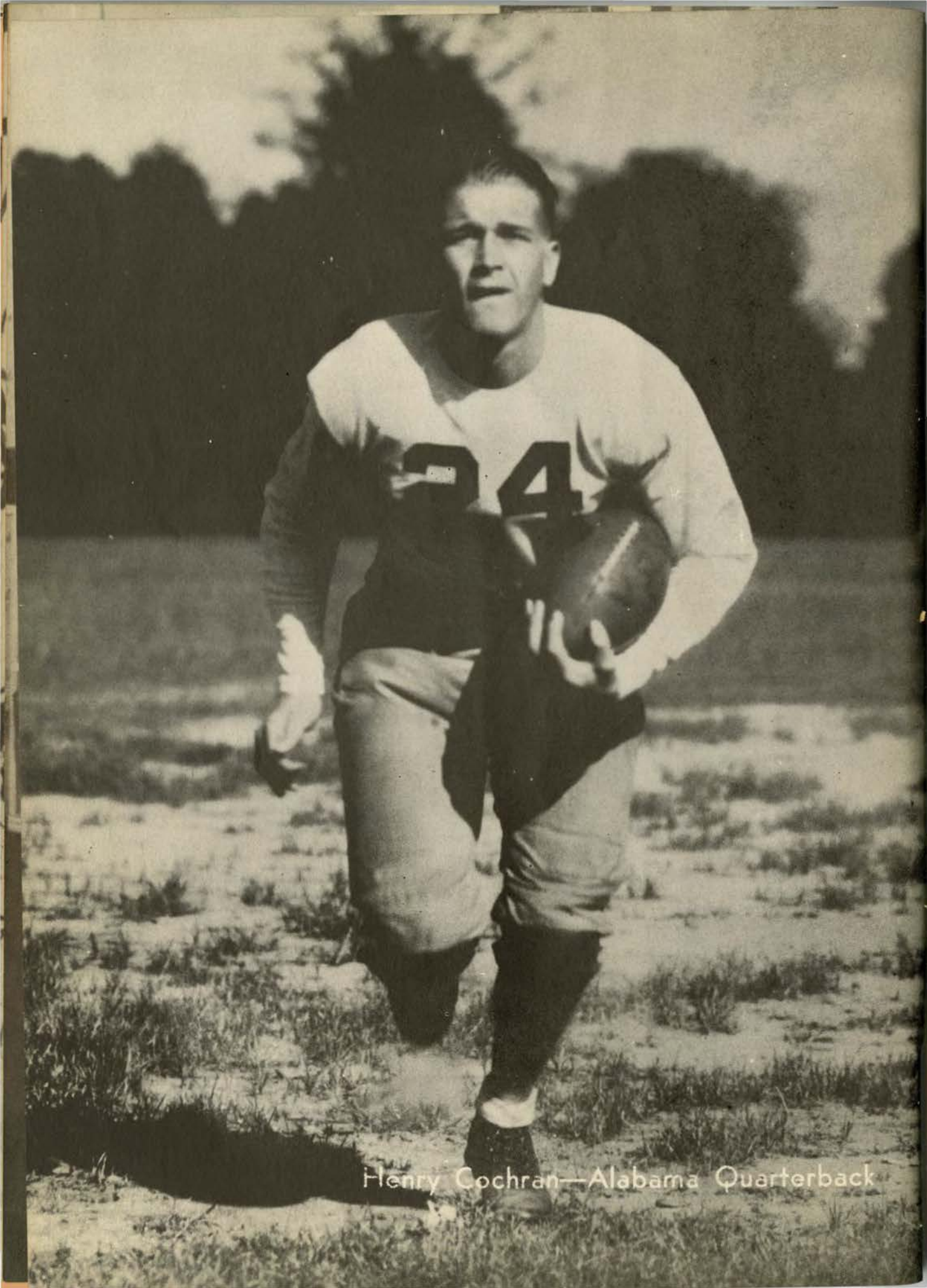


WAR BABY GROWS UP

Mary Ashley Greene, Newcomb senior, born at Nogales, Arizona, in November, 1916, while her father chased Villa as a captain of infantry under Funston. Her mother traveled to Nogales in October, 1916, by caboose from Alabama with wives of other officers! Major Greene was killed in France, while leading gallant Company "C" of the 167th Infantry, Rainbow Division. Mary Ashley Greene, descendant of an old Alabama family, nationally known in 1916 as the "Border Baby" has grown up.



Edward Scott—Miss. State College Halfback



Henry Cochran—Alabama Quarterback



Ray Hapes—Ole Miss Halfback



Chas. "Pinky" Rohm
Halfback—L.S.U.

DEAR FOOTBALL FAN: The Campus Camera is published for your enjoyment. We hope that you have been pleased with the portrayals of campus life shown in this issue. If you have any suggestions which would make this publication more interesting, we would like to hear from you. Just write the Football Program Manager of the home team. You are seeing "All-Americans" in action on the field today! May we remind you that 7-Up is the "All-American Thirst Quencher."

Cordially,

TRY A BOTTLE OF 7-UP NOW
YOU LIKE IT — IT LIKES YOU!

YOUR 7-UP BOTTLER.

THE
BEST
SHOP
IN
TOWN



"... and please, just any man for the opening party. One in a Hart Schaffner & Marx suit would be asking too much."



Stevens

Hart Schaffner & Marx Clothes

710 CANAL STREET

*Compliments to the
Tulane Green Wave*

FROM

*Kolb's
Restaurant*

AND

The Tyrolean Singers

Fine Foods—Unexcelled Service
and Novel Entertainment Nightly.

125 St. Charles St.
(Near Canal)

The Thinking Fellow Calls a Yellow

TO AND FROM GAMES

35c

ANYWHERE WITHIN CITY

(Outlying Points Excepted)

FIVE can ride for the price of ONE—
Club together!

Phone
RAYmond 3311

TOYE BROS.
YELLOW CABS



"So you thought you heard somebody yell, 'SHIFT'?"

"Aw, be a sport, Coach, she's got to go back to Keokuk right after the game!"

Bob Row

Graduate Shirt Styles As Set by the Undergraduate



This season's
trend is to whites
and stripes.

•

The Three most
popular styles in
Tulane Shirts.

"All-American"
Comfort-plus.

"Touch Down"
Collegiate
fashioning.

"Green Wave"
Freshman's
special.

•

*Be Smartly Styled and Always Comfortable
in—*

TULANE SHIRTS

O'Shea...

A name synonymous with the best in athletic knitted goods from Coast to Coast. Tulane's Green Wave and every other leading institution uses O'Shea goods.

Ask any coach—he will tell you that O'Shea is the best.

O'SHEA KNITTING MILLS
2414 N. Sacramento Ave.
Chicago, Illinois

DUNLAP

SPORTING GOODS CO., INC.

ATHLETIC SUPPLIES
GOLF TENNIS
SPORT CLOTHING
GUNS AMMUNITION
FISHING TACKLE

DISTRIBUTORS
A. J. REACH, WRIGHT & DITSON CO.
138 Carondelet Street. MAin 6660

Did YOU send HER a CORSAGE
to WEAR to the GAME?

We Supply Flowers for Campus Occasions

J. C. Quinette
Floral Service

1345 Lowerline St. at Willow
Phone WALnut 0451

*Just Five Blocks up Willow Street from
the Stadium*

Tickets
Tulane-Auburn Game
Go On Sale
MONDAY
221 Baronne Street

1st Reserved	- - - - -	\$2.75
2nd Reserved	- - - - -	2.20
3rd Reserved	- - - - -	1.65
General Admission	- - - - -	1.10

NO RULES CHANGES . . .

THE PROSECUTION RESTS

Football's playing rules this season are much the same as they were in 1936. Differences, if any, noted by the spectator, will be in interpretation rather than in actual coding.

For some years, after a sort of epidemic of revision, the Rules Committee, headed by Walter Oke-son of Lehigh, has been exceedingly chary of any drastic changes. And despite the wholesale hue and cry for change that went up at the tail-end of the 1936 campaign, the rule-makers decided on a program which was standpattish, to say the least.

The big holler, of course, was over the forward pass interference rule. Many games, particularly eastern fixtures, were marred by literal interpretation of pass interference. "Marred" is too mild a word, for, actually, the final outcome was definitely reversed in at least 20 major contests.

Having duly considered and digested the yelps about pass interference, the rule-makers drafted one paragraph for the report. This read, in part: "Defensive players have as much right to the ball as the eligible opponents, and bodily contact, however severe, between players making a bonafide attempt to catch or bat the ball shall not be construed as interference."

This throws the entire burden back on the harried officials. They must decide whether a defending player is interested solely in snaring a pass or grounding it, or whether he is actually trying to interfere with a would-be receiver. The official is the goat in any case, for the partisan fan always sees such incidents as favorable to his side.

The rules contain two changes which theorists of the game might term as major, but which make but little actual difference to the casual observer.

No. 1 is the rule which defines the striking by a player of a free ball. It prevents a player from kicking a ball "accidentally on purpose" by defining the manner in which a ball hits him. If it strikes any part of his body "except his feet" it's okeh, or, as they say in golf, a "rub of the green."

No. 2 deals with the kickoff. Under the present code there is but one kickoff. If the ball goes outside

bounds on the first try, that's just too bad. It's brought in, and the receiving team has the choice of placing it on its own 35-yard line or ten yards in from the point where the ball left the field.

Wearing of numbers is now mandatory. The committee finally listened to complaints of the cash customers by ordering players to wear numerals in front and back. There is a joker in the regulation, however. Any coach who wants to hide identity of his players has only to order numerals which offer little or no contrast with the jerseys. If this is too much trouble he can adopt numerals of size so small they couldn't be seen through the Lick telescope. Some day the fan will get his due by having ALL players on ALL teams so numbered that he can tell whom he's looking at before reading it in the papers the next day.

But the story of our rules today centers about that old devil, the pass interference penalty. As stated above, the matter is largely one of judgment.

But until the rules committee becomes more specific in its definition, an official could be well within his rights in charging interference and thus ordering possession by the attacking team at the point where the alleged foul occurred.

One of the panaceas offered for the difficulty was to establish a certain amount of yardage gain (under a term of penalty for the defense). This, however, leads to obvious difficulties. It could (and often would) make the penalty more severe than it is at the present time. Another would make the interference penalty effective only when a pass was started at a considerable distance from the goal line, and would allow the defense to shoot the works in the matter of interference within a given territory under the goal post shadows. This would immediately put back into the game a chance for roughing that would make the old flying wedge look like a Vassar daisy chain.

No, the answer is simply sane officiating—reasonable decision as to whether or not a foul, deliberate or unintentional, was committed. And now who's going to decide the margin of reasonableness?



Dingelhoff Selections



Here's the selections for today as named by Colonel "Screwball" Dingelhoff, the old handicapper:

BAYLOR over Southwestern
(Texas).

PURDUE over Butler.

COLGATE over St. Lawrence.

SOUTHERN CAL. over Col. of
Pacific.

CORNELL over Penn. State

DUKE over V. P. I.

WASH. STATE over Gonzaga.

L. S. U. over Florida.

CALIFORNIA over St. Mary's.

SANTA CLARA over Stanford.

VANDERBILT over Kentucky.

OLE MISS over La. Tech.

NORTH CAROLINA over South
Carolina.

Tulane Green Wave 1937

Varsity Football Schedule

—SEPTEMBER 25—

Clemson - - - - - New Orleans

—OCTOBER 2—

Auburn - - - - - New Orleans

—OCTOBER 9—

Mississippi College - - - New Orleans

—OCTOBER 16—

Colgate - - - - - Buffalo, N. Y.

—OCTOBER 23—

North Carolina - - - Chapel Hill, N. C.

—OCTOBER 30—

Univ. of Mississippi - - - New Orleans

—NOVEMBER 6—

Alabama (Homecoming) - New Orleans

—NOVEMBER 13—

Georgia - - - - - Athens, Ga.

—NOVEMBER 20—

Sewanee - - - - - New Orleans

—NOVEMBER 27—

Louisiana State U. - - - New Orleans



And He Learned
about *FRESHNESS*
from Her!



Copyright, 1937, P. Lorillard Co., Inc.

**PRIZE CROP TOBACCOS MAKE THEM DOUBLE-MELLOW
2 JACKETS OF "CELLOPHANE" KEEP THEM FACTORY-FRESH**

PULANE



**RALPH
BOND**
QUARTERBACK



**BILLY
PAYNE**
HALFBACK



**BILL
BRUNNER**
HALFBACK

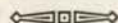


**JOHN
ANDREWS**
FULLBACK

RAY MILLER
TACKLE

TULANE ROSTER

No.	PLAYER—	HOME TOWN—	Position	Wt.	Year On Team
5	Painter, Steven	New Orleans	QB	160	1
8	Corales, Richard	New Orleans	E	185	1
9	Stern, Morris	New Orleans	T	183	1
24	Brunner, Warren	New Orleans	HB	180	2
35	Dalovisio, Pete	Lake Charles, La.	E	180	3
38	Banker, Buddy	Lake Charles, La.	HB	169	1
39	Richardson, Ned	Ponchatoula, La.	QB	170	1
40	Overdyke, Don	Shreveport, La.	QB	169	1
41	Andrews, John	New Orleans	FB	196	3
42	Watermier, Dan	New Orleans	G	190	3
43	Butler, Monette	Oak Grove, La.	FB	180	1
44	Krueger, Paul	Gary, Ind.	QB	173	1
45	Moreau, James	New Orleans	E	162	3
46	Smith, Bernie	Clarksdale, Miss.	C	200	1
47	Flowers, Bill	Big Spring, Texas	HB	175	3
48	Manteris, George	Monroe, La.	HB	160	3
49	Mattis, Bill "Dub"	Oak Grove, La.	HB	184	2
50	Nyhan, Stanley	Waterloo, Iowa	QB	175	1
51	Sauer, Leonard	Kildare, Okla.	FB	182	1
52	Dirmann, John	New Orleans	E	171	3
53	Jahncke, Phil	New Orleans	G	178	1
54	Smith, Philo	Shelbyville, Ky.	HB	178	1
55	Oelschlager, Kurt	Oshkosh, Wisc.	E	183	1
56	Bond, Ralph	New Orleans	QB	180	2
57	Payne, William	Winterville, Miss.	HB	175	2
58	Marmillion, Norman	Ponchatoula, La.	HB	170	1
59	Henley, Cecil	Rosedale, Miss.	G	185	2
60	Tull, Porter	New Orleans	C	173	2
61	Ott, Tate	Osyka, Miss.	FB	177	1
62	Goldman, Corneal	Waterproof, La.	G	181	1
63	Goodell, Elson	Independence, Kans.	E	175	2
64	Hickey, "Cy"	New Orleans	G	186	1
65	Goll, Carl	New Orleans	G	196	3
66	Flower, Henry	New Orleans	C	182	1
67	Gorman, Albert	New Orleans	C	205	2
68	Buckner, Norman (Co-Capt.)	Marshall, Texas	G	195	3
69	Hall, Normal (Co-Capt.)	Sweetwater, Texas	G	190	3
70	Avants, Mack	Baton Rouge, La.	T	211	3
71	Friedrichs, Jerry	New Orleans	E	190	3
72	Upton, Miller	New Orleans	T	210	2
73	DeFraithe, Emanuel	New Orleans	E	185	1
74	Wenzel, Ralph	Tucker, Ark.	T	208	1
75	Dailey, Carl	Balboa, Panama	G	184	2
76	White, Millard	Arkansas City, Kans.	T	207	1
77	O'Boyle, Tom	Gary, Ind.	G	210	1
78	Golomb, Pete	Oshkosh, Wisc.	E	200	1
79	Miller, Ray	New Orleans	T	209	2
80	Benedict, Calvin	New Orleans	QB	160	3
81	Dexheimer, Bob	Abbeville, La.	HB	169	3
83	Payne, H.	Winterville, Miss.	HB	160	2
96	Kirchem, Bill	New Orleans	T	215	1




CLEMSON ROSTER

21	Magee, Watson	Nashville, Tenn.	HB	164	2
22	Woods, Charlie	Savannah, Ga.	C	175	2
23	Jackson, Wister	Starr, S. Car.	E	190	1
25	Moore, Gilmore	Rock Hill, S. Car.	C	168	1
26	Wiles, Billy	Columbia, S. Car.	FB	180	3
27	Davis, Cauty	Greenville, S. Car.	B	160	1
28	Payne, Joe	Greenville, S. Car.	T	180	1
29	Bryant, Loyell	Carthage, Tenn.	HB	155	1
31	Carlisle, Bill	Spartanburg, S. Car.	E	168	1
32	Pritchett, Jess	Experiment, Ga.	G	195	3
33	Pennington, Curtiss	Matthews, Ga.	T	200	2
34	Lewis, Harold (Capt.)	Mullins, S. Car.	C	180	3
35	Folger, Al	Pickens, S. Car.	HB	160	2
37	Holman, Grady	Augusta, Ga.	HB	165	2
38	Chovan, Phil	Bethlehem, Penna.	HB	170	2
39	Pearson, Ben	Savannah, Ga.	HB	165	2
40	Payne, Oliver	Greenville, S. Car.	G	173	3
41	Heatwole, Holmes	Washington, D. C.	QB	135	2
42	Bailey, Bob	Florence, S. Car.	QB	170	2
43	Sanders, Al	Camden, S. Car.	HB	170	3
44	Sharpe, Robert	Abbeville, S. Car.	C	180	1
45	Segars, Albert	Hartsville, S. Car.	T	190	1
46	Cox, Walter	Belton, S. Car.	G	175	1
48	Goins, Gus	Fitzgerald, Ga.	E	190	2
49	McFadden, Banks	Great Falls, S. Car.	B	180	1
50	Fox, Regan	Landrum, S. Car.	G	180	1
53	Wyse, Fred	Columbia, S. Car.	T	190	2
54	Willis, Don	Greenville, S. Car.	FB	195	2
55	Trexler, Bru	Greenville, S. Car.	B	180	1
56	McConnell, Tom	Anderson, S. Car.	E	179	3
59	Moorer, Tom	Charleston, S. Car.	G	200	1
60	Brvant, Bill	Marion, S. Car.	G	205	3
61	Miller, Herbert	Ridgeland, S. Car.	T	200	2
62	Black, Carl	Ward, S. Car.	E	180	1
63	Simmons, Ralph	Pittsfield, Mass.	G	200	1
65	Coleman, Dan	Saluda, S. Car.	HB	170	1

THE *New* RULES THIS SEASON



We particularly want you to meet Madame Bertrand, the new manager of our new millinery department. She will be delighted to discuss your every millinery desire.



Fashion rules for Fall are very easy to follow. If you like to be sure of yourself see the new millinery in Godchaux's . . . whether you want French originals, studio copies, young sporty hats, styles extreme or conservative you'll find your hat at Godchaux's.

The two hats illustrated are exactly right for football games and are \$5.00.

SHOES BY WALK-OVER

You'll go head over heels in love with the new style we're sponsoring, Half Hite Heels by Walk-Over. Here are heels low enough for dashing about in comfort and at the same time they are definitely high style. Delightfully new models in luxurious soft suède . . . all at attractive prices.

Be comfortable as well as correct
in shoes by Walk-Over



GODCHAUX'S HAS THE CLOTHES

GRANDSTAND QUARTERBACKS

are wearing

CAVALIER SUITS

If you are not wearing a new Cavalier suit right now you should be. Slip into one and we think you'll agree with us because Cavalier features the new plaid patterns and the new drape **\$39.75** and regular models. The price is only.

and the

Mystery Hat

What will happen to your hat if it suddenly starts to rain? If it's a Mystery Felt you needn't worry at all. For no matter how hard or how much it rains it never loses its shape and color. Here is a hat that is truly weatherproof. It's lightweight, too, and comes in the new colors and **\$5.00** models that are style right for this Fall...

the Mystery Hat comes up smiling from a soaking

Godechaux's





**See
and
Be
Seen**



at the Game . .

SEE every play of the game with field glasses. The magnifying lenses may be focused individually for clear vision.

Hook these glasses behind your ears, like spectacles, your hands free for excited gestures!.....

1.95

Sports Shop—Third Floor

BE SEEN wearing a suit that sets you apart from the cheering crowd—makes you the well-dressed man. Maison Blanche does things in a big way—so you'll find suits in *greatest variety* here. Your type—your style—tailored to your liking—priced within your range.

THE VARSITY SHOP...
Street Floor

Maison Blanche

GREATEST STORE SOUTH

THIS PAGE SOLD TO

**The
American Tobacco Co.**

Makers of

Lucky Strike Cigarettes

(Publisher's note: We regret that we were unable to present the cover which had been planned for the Tulane-Clemson issue of this program. The 4-color covers were ordered from the New York printer designated by the American Tobacco Company but failed to arrive in time for use.)