

V. 15, no. 4



# TULANE vs. MISS. STATE

NOVEMBER 3, 1945

*Souvenir Program..... 25¢*



# THESE ARE THE OFFICIAL 1945 Signals



Listen to  
"Time Out"  
WITH  
**JOHNNY LYNCH**  
Thursdays  
**WWL** 5:15-5:30 P.M.

And for Your  
**Time Out**



JACKSON BREWING COMPANY  
NEW ORLEANS, LA.

DRINK

# JAX

BEST BEER IN TOWN



# THE GREENIE

Vol 15

NOVEMBER 3, 1945

No. 4

Official Souvenir Football Program of Tulane University, Published for Each Home Game

National Advertising Representative, Football Publications, 370 Lexington, New York City.

ANDY ROGERS, Editor

CAROL HART, Associate Editor

## State-Wave History

The Tulane Green Wave's opponent today is Mississippi State, one of two unbeaten and untied teams in the Deep South. With Alabama, the Maroons are leading the Southeastern Conference football race and, like the Crimson, have yet to taste defeat.

The Maroons have an impressive record thus far, having won four straight games and scored 108 points while having only two touchdowns scored against them. The Staters opened by whitewashing Southwestern Louisiana Institute, again applied the white paint to the Auburn Tigers, came through with an easy victory over the University of Detroit, and then scored a 16-6 win over Maxwell Field's EFTC Eagles.

Today's encounter marks the 26th time that Wave and Maroon teams have squared off on the gridiron. But it is only the second time that Tulane has faced a State team coached by Allyn McKeen.

Tulane holds a big edge in the all-time series record. The Mississippians have been able to win but seven games of 25 played, while Tulane has taken down 16 triumphs and two tilts have ended in ties.

The Mississippi State series is the second oldest on the Tulane schedule this season. It was begun in 1901 when Tulane copped a 24-6 victory. Since that time such odd scores as 11-11, 5-4, 2-0 and 27-24 have marked the sharp rivalry between these two schools.

The last meeting between the Maroons and the Wave was in 1942 before State discontinued football. Mississippi State ruined a homecoming celebration by winning a 7-0 victory over the Wave. That was the first time an Allyn McKeen team had met the Green Wave.

Despite Tulane's edge in the series, State handed a Greenie team the worst defeat of the long rivalry. In 1914, the Maroons recorded a 61-0 victory over the Wave. Tulane partially avenged that licking with a 53-0 verdict in 1930.

McKeen, a disciple of Tennessee's Major Bob Neyland, has enjoyed remarkable success since taking over the reins at Mississippi State. After leaving a law practice in Memphis to become head

coach at Memphis State College where he stayed for two seasons, McKeen became head man at Starkville in 1939.

In five seasons his teams have won 40, lost seven and tied two games. His 1940 team played in the Orange Bowl, defeating a powerful Georgetown team, 14-7. The next season, he brought the Maroons their first Southeastern Conference championship, winning eight, losing one and tying one. Last year, the Maroons, after a year's layoff returned to the grid wars to win six of eight games.

McKeen is assisted by Line Coach Ed Molinski, former Tennessee star, End Coach Dick Hitt of Mississippi College and Phil Dickens, trainer, who also is an ex-Tennessee man.

C. R. "Dudy" Noble is the director of athletics.

## LOST ARTICLES

Lost articles should be turned in at Room 18 near the North end of the West Side, Tulane Stadium. Room 18 is located near the foot of Ramp 6. For telephone information regarding lost and found articles, call WALnut 5754.

WHY BE IRRITATED?

ARMY

Old Gold CIGARETTES

-LIGHT AN OLD GOLD

Apple "Honey" helps guard O.Gs. from Cigarette Dryness



*The Roosevelt*

## *New Orleans' Finest*

In America's Most Interesting City



THE ROOSEVELT is located in the heart of Romantic old New Orleans. It is in the center of business and social activities and is close to the Theatre, Shopping, French Quarter, and Business Districts . . . You will like the tasteful luxury and home-like atmosphere of this modern hotel where the traditions of Southern Hospitality are maintained the year 'round.

**800 ROOMS WITH BATH**

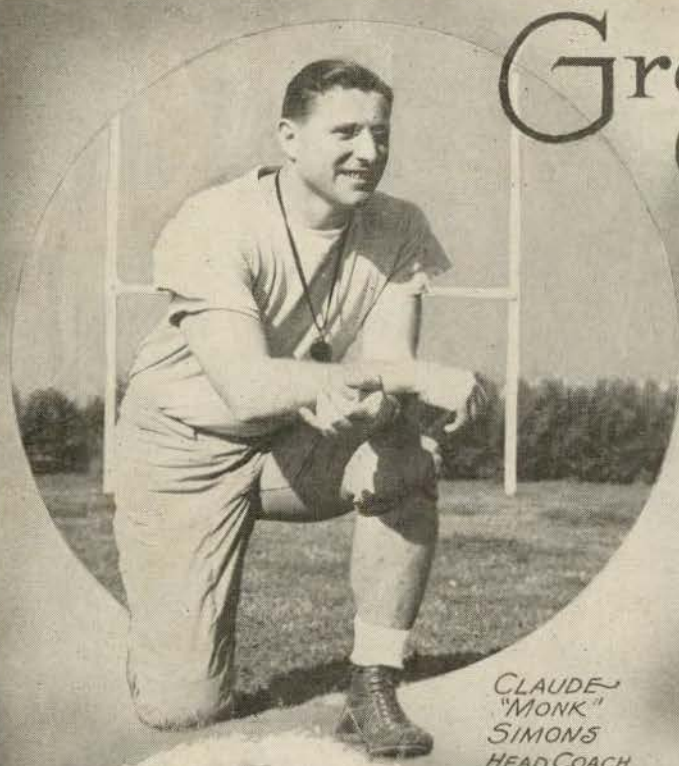
**MODERATE RATES**



*The Roosevelt*  
*"The Pride of the South"*



# Green Wave Coaches



CLAUDE  
"MONK"  
SIMONS  
HEAD COACH



WERNER "DUTCH" LUCHSINGER  
TRAINER



MUREL  
NEMECEK  
BACKFIELD  
COACH



TOMMY O'BOYLE  
ASST. LINE COACH



TATE "PINEY" PAGE  
LINE COACH



VERNON "LEFTY" HAYNES  
END COACH

*Famous for*  
**FINE FOOD**  
and **DRINK**



TONIGHT — enjoy  
specialties of these  
noted restaurants:

**ANTOINE'S**  
713 St. Louis St.

**ARNAUD'S**  
813 Bienville St.

**BROUSSARD'S**  
819 Conti St.

**KOLB'S**  
125 St. Charles St.

**LA LOUISIANE**  
725 Iberville St.

*Shop With Confidence*



You can't go wrong with  
your choice when it comes  
from Mayer Israel's. For  
over 50 years, the words  
Mayer Israel's and fine  
fashions have been syn-  
onymous — signifying  
only the finest in quality.

Shop with confidence at  
Mayer Israel's—the store  
of fine fashions for men,  
women and children.



**Mayer Israel's**

714 Canal Street





RICHARD HOOT  
HALFBACK



JAMES LEE  
FULLBACK



WALTER FERGERSON  
FULLBACK



JACK COUNCE  
HALFBACK



GEORGE  
ROBINSON  
TACKLE



LEROY  
SCHNEIDER  
TACKLE



WILLIAM  
LEAHEY  
QUARTERBACK



GASTON BOURGEOIS  
GUARD



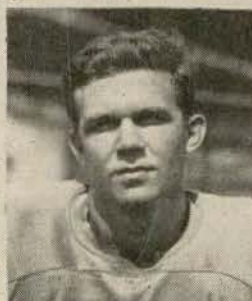
JIMMY LASSETTER  
END



MARVIN MCCAIN  
HALFBACK



HUGH BOWERS  
CENTER



WILLIAM REYNOLDS  
HALFBACK

T  
U  
L  
A  
N  
E

1  
9  
4  
5



# TWEEDS ARE COLLEGIATE!



## ALL WOOL SUITS

Smartly tailored suits in both single and double-breasted styles. New fall colors. Full size range.

**32.50**

Other Tweeds . . 27.50 -- 35.00

- Smart Herringbones!
- Fancy Diagonals!
- Plain Donegals!

● Men's Clothing,  
MB First Floor

# *Maison Blanche*

GREATEST STORE SOUTH



# Pulane



ERNEST CROUCH  
QUARTERBACK



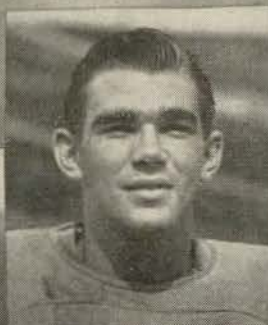
RAY ARTHUR  
QUARTERBACK



LARRY McDONALD  
END



DAVID RIDEOUT  
HALFBACK



JOE YOUNG  
HALFBACK



ROBERT SHIRLEY  
END



TONY CASH  
END



WILLIAM WATKINS  
END



ROBERT LOGAN  
TACKLE



ELLIOTT  
IGLEHEART  
GUARD



ROY BAILEY  
END



JOHN  
FRANK  
GUARD

# Greenies



## Penalties

- 1 Taking more than three times out during either half
- 2 Illegal delay of game
- 3 Failure of substitute to report to umpire
- 4 Violation of kick-off formation

### LOSS OF FIVE YARDS

- 5 Failure to maintain proper alignment of offensive team before ball is snapped. Also, backfield man illegally in motion
- 6 Offside by either team, or encroachment on neutral zone
- 7 Attempt to draw opponents offside

- 8 Taking more than two steps with ball after signaling for fair catch
- 9 Illegal use of hands and arms by defensive players
- 10 Flying block or flying tackle
- 11 Player in motion less than 5 yards behind line of scrimmage.
- 12 Crawling by the runner

### LOSS OF FIFTEEN YARDS

- 13 Team not ready to play at scheduled time
- 14 Substitute communicating with teammates before ball is put in play
- 15 Illegal substitution (player also suspended from game)
- 16 Failure to stop at least one second on shift play
- 17 Forward pass by member of team which did not put ball in play

- 18 Forward pass touched by ineligible player
- 19 Intentional grounding of forward pass
- 20 Interference by member of passing team with defensive player eligible for pass
- 21 Interference with fair-catch or tackling player before ball is caught

- 22 Illegal use of hands and arms by offensive players
- 23 Defensive player striking opponent above shoulders
- 24 Roughing the kicker
- 25 Piling up, hurdling, clipping
- 26 Tackling player out of bounds
- 27 Coaching from the sidelines
- 28 Illegal interference with defense by passing team

### OTHER PENALTIES

- 29 Striking, kneeling, or kicking opponent—half the distance to the goal and disqualification of offending player
- 30 Foul within one yard line—half the distance to the goal

- 31 Interference by defensive team on forward pass—first down for passing team at spot of foul
- 32 Flagrant roughing of kicker—disqualification, plus fifteen yards

- 33 Flagrant unsportsmanlike conduct—disqualification, plus fifteen yards
- 34 Forward pass touched by ineligible player on or behind line of scrimmage—loss of down

JOHNNY  
CALLS 'EM

## SIGNALS & PENALTIES

**Holding.** (Penalty—by offense, 15 yards; by defense, 5 yards.)

**Player illegally in motion.** (Penalty, 5 yards. If from shift or huddle, 15 yards.)

**Time out.**

**Unsportsmanlike conduct.** (Penalty—15 yards.) For flagrant unsportsmanlike conduct—15 yard penalty and disqualification.

**Offside or violation of kick-off formation.** (Penalty, 5 yards.)

**Illegal touching of kicked ball inside opponent's 10-yard line—touchback.**

**Score—touchdown, field goal, or conversion.**

**Unnecessary roughness, illegal defensive use of the hands, clipping, running into or roughing the kicker.** (Penalty, 15 yards.)

**Penalty refused, incomplete pass, missed field goal or conversion, both sides offside, etc.**

**Delay of game or extra time-outs.** (Penalty, 5 yards.)

**Interference with forward pass, pass touching ineligible player, or "screening" pass receiver.** (If penalty on offense, when interference occurs beyond line of scrimmage, 15 yards and loss of down; on or behind line of scrimmage, loss of down only. Interference by defense, ball to offense on spot of foul as first down.)

**Illegal formation or position of one or more players.** (Penalty—5 yards from where ball was put in play.)

**Illegal forward pass.**

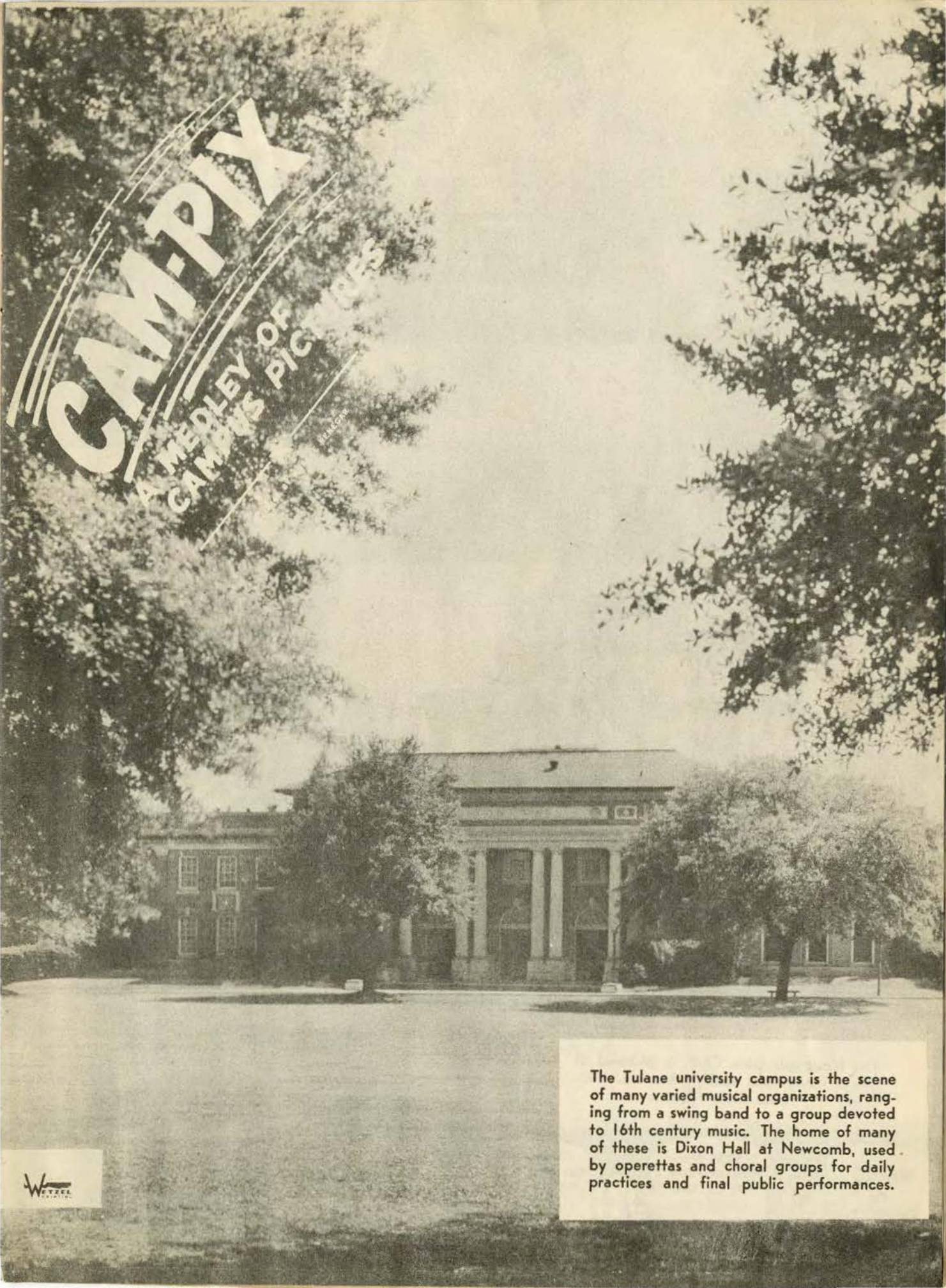
**Safety.**

**Intentional grounding of forward pass.** (Penalty—loss of down and 15 yard penalty from spot of preceding down.)

**Crawling or pushing, 5 yds.; helping ball carrier, 15 yards.**

**CALL FOR PHILIP MORRIS**  
AMERICA'S FINEST CIGARETTE





# CAMPPIX

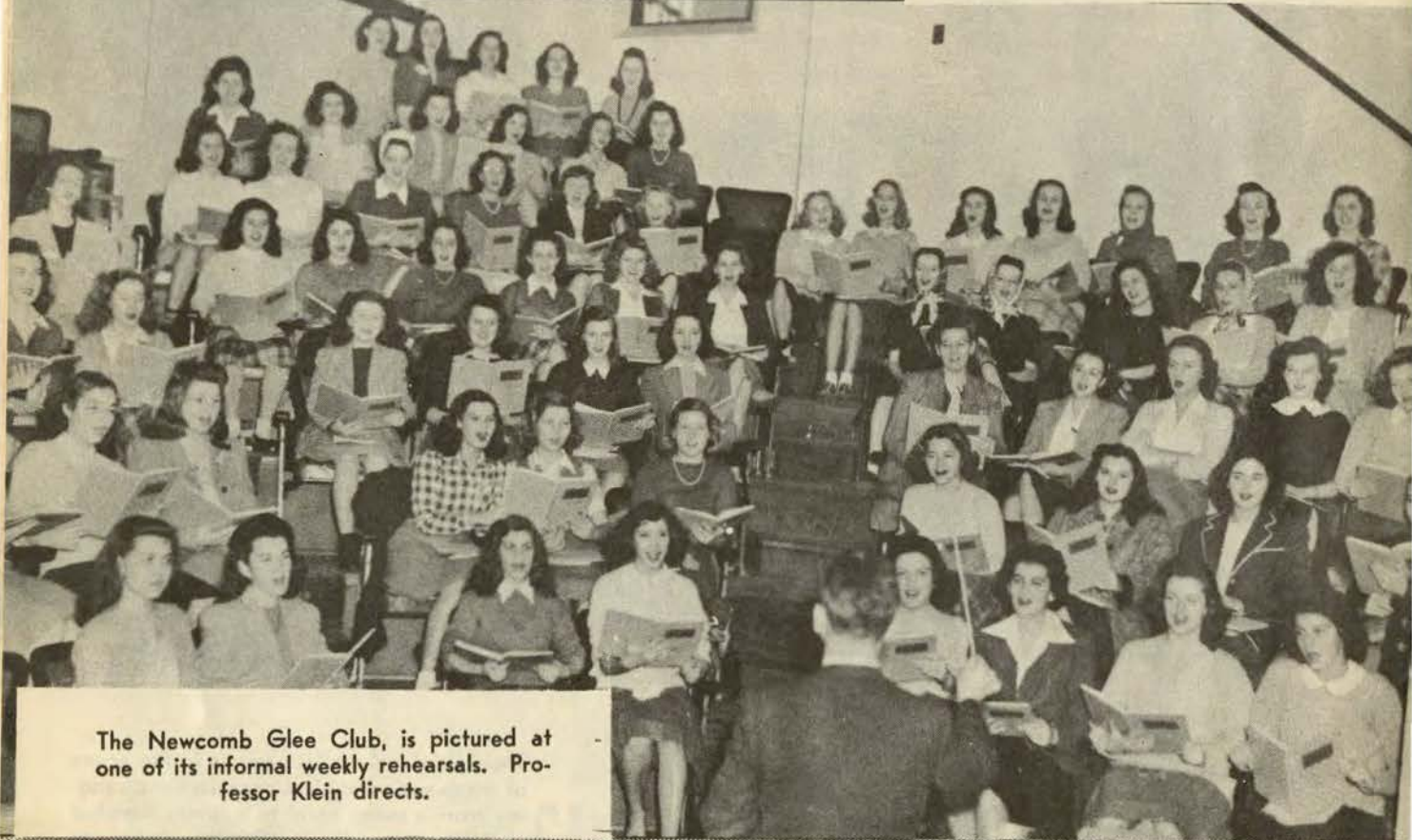
A MEDLEY OF  
CAMPUS PICTURES

The Tulane university campus is the scene of many varied musical organizations, ranging from a swing band to a group devoted to 16th century music. The home of many of these is Dixon Hall at Newcomb, used by operettas and choral groups for daily practices and final public performances.





Maynard Klein, right, the director of choral activities, leads a group of select students called the "Elizabethans", specialists in 16th century music.



The Newcomb Glee Club, is pictured at one of its informal weekly rehearsals. Professor Klein directs.

WHERE  
IS  
PORTER'S?  
HUH?

ACROSS THE  
STREET FROM  
THE COTTON  
EXCHANGE..

AROUND THE  
CORNER FROM  
THE ST. CHARLES  
HOTEL ..

OPPOSITE THE HIBERNIA  
NATIONAL BANK AND  
IN THE SAME BLOCK  
WITH THE  
AMERICAN BANK

ASK ANYBODY!

EVERYTHING MEN WEAR

**Porter's**

CARONDELET COR. GRAVIER STS.



Tulane's own dance band the "Tulanians", swings out on a hot piece in one of the many performances at student body functions.



keep dry on WETTEST DAYS

**RAINFALL STORMCOATS**



from  
**Porter's**



The Tulane-Newcomb Festival Choir is the largest choral group at Tulane. It specializes in first performances of modern compositions and annually appears in public recital.



Individual voice instruction is given by Professor Klein in one of the many specially equipped music rooms in Dixon Hall.

Good Grooming  
A-HEAD  with  
**STYLEPARK HATS**  
from *Porter's*



*This Program Printed*

*by*

**TULANE UNIVERSITY PRESS**

*Printing Department of Tulane University*



**CAMPUS PRINTERS**

Basement, Gibson Hall  
Phone WALnut 0082

*Cover printed on recently installed  
automatic press*

**AT THE GAME**

**and**

**AFTER THE GAME**

**ENJOY**



**“Time Out”**

**DRINK—**

**Coca-Cola**

**PAUSE—**

**RELAX—**

**REFRESH YOURSELF**



# Good Old REGAL BEER



## TULANE

### STARTING LINEUP

LE	LT	LG	C	RG	RT	RE
Bailey 32	Robinson 36	Brinker 44	Bowers 14	Bourgeois 38	Schneider 45	Watkins 50

LHB  
Counce  
33

QB  
Crouch  
20

RHB  
Arthur  
10

FB  
McCain  
25

### SQUAD LIST

10 Arthur, b	26 Banowetz, b	40 Stolen, c
11 Lee, b	27 Rowland, t	41 Frank, g
12 Rideout, b	28 Robertson, b	42 Bie, c
14 Bowers, c	29 Reynolds, b	43 Ferguson, t
15 Leahey, b	30 Cash, e	44 Brinker, g
16 Levonian, b	31 Lassetter, e	45 Schneider, t
18 Young, b	32 Bailey, e	49 Terrell, g
19 McDonald, e	33 Counce, b	50 Watkins, e
20 Crouch, b	34 Logan, t	58 Shirley, e
21 Seybold, g	35 Woodiel, g	65 Johnson, t
22 Hoot, b	36 Robinson, t	80 Ellender, e
23 Chavez, b	37 Carter, g	86 Paxton, t
24 Timken, t	38 Bourgeois, g	
25 McCain, b	39 Igleheart, g	

### OFFICIALS

Referee—Buck Cheves (Georgia)  
Umpire—Cliff Norvell (Memphis, Tenn.)

## MISS. STATE

### STARTING LINEUP

LE	LT	LG	C	RG	RT	RE
Howard 87	Kerby 75	Harris 67	Cadenhead 54	Lowe 66	Garrett 76	Hildebrand 86

QB  
Floyd  
24

LHB  
Robinson  
44

RHB  
Stuart  
13

FB  
Rhoades  
34

### SQUAD LIST

11 Nobles, hb	43 Davis, hb	72 Martin, t
12 Wall, hb	44 Robinson, hb	74 Stewart, t
13 Stuart, hb	51 Bullock, c	75 Kerby, t
14 Trammell, hb	52 Miley, c	76 Garrett, t
15 McIngvale, hb	53 Jeffreys, c	77 Carroll, t
21 France, qb	54 Cadenhead, c	81 Williams, e
22 Black, qb	61 Matthews, g	82 Forrester, e
23 Wallace, qb	62 McCracken, g	84 Smith, e
24 Floyd, qb	64 Williams, g	85 Wolverton, e
31 King, fb	65 Saia, g	86 Hildebrand, e
32 McCaleb, fb	66 Lowe, g	87 Howard, e
33 Bramlett, fb	67 Harris, g	88 Burrese, e
34 Rhoades, fb	68 Morganti, g	
41 Winstead, hb	71 Hegwood, t	

### OFFICIALS

Head Linesman—G. C. Gardner, (Georgia Tech)  
Field Judge—T. L. Johnson (Georgia Tech)

*Prince of Golden Beers*



D  
U  
N  
L  
A  
P

Equipment for all sports...

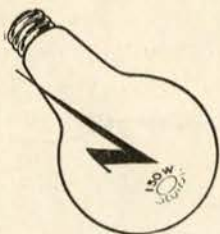
*Specialists in all types of  
school athletic  
supplies*

**Sporting Goods Co.**  
(JOHNNY LYNCH'S)  
138 Carondelet Street  
MAgnolia 5891



*Better Printers  
in New Orleans*

**150 WATTS IS RIGHT HERE**

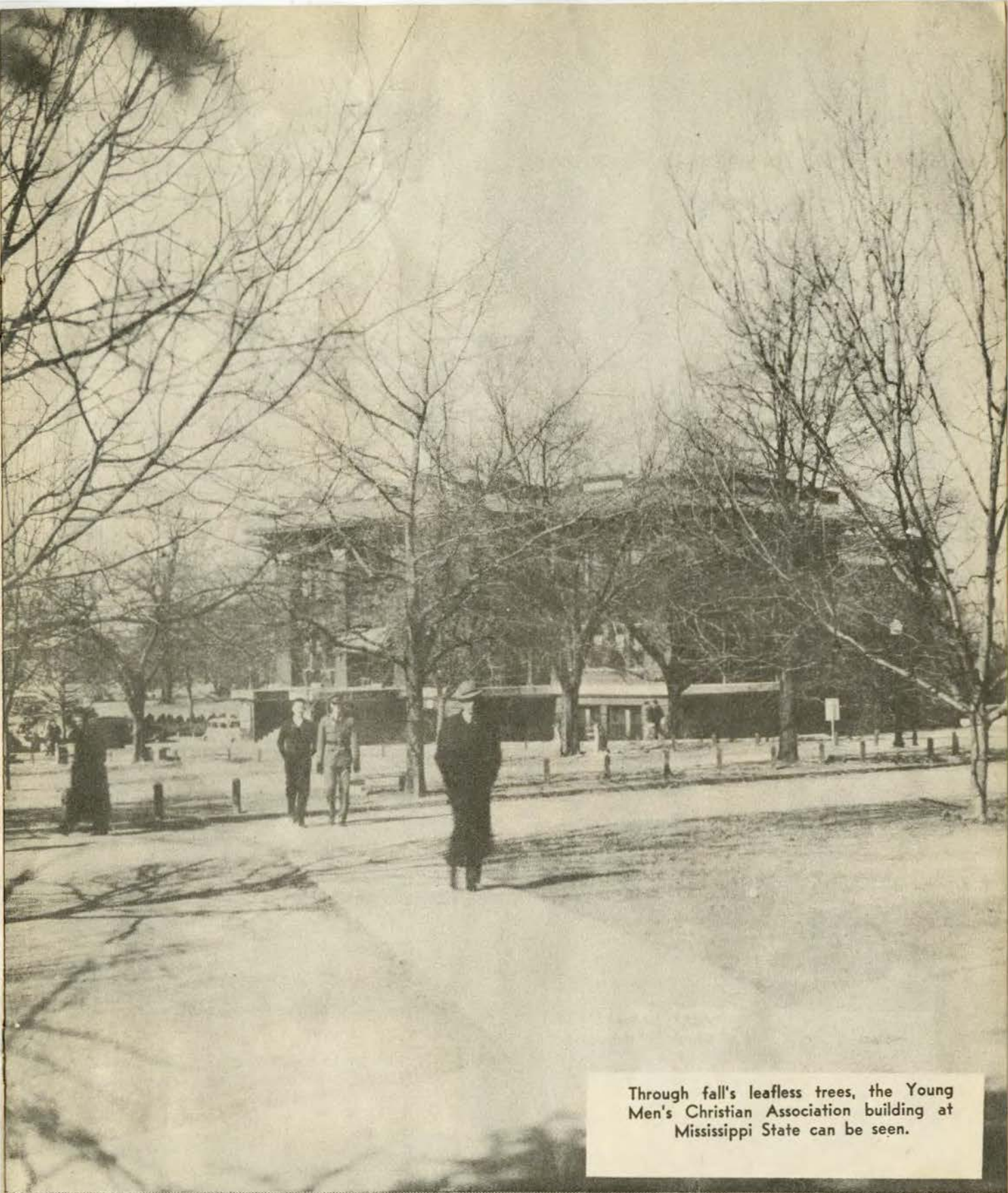


You'll get more pleasure out of winter evenings at home when congenial friends call to play a few rubbers of bridge or other games if you use enough light. See that your bridge lamps contain 150-watt bulbs for comfortable seeing. Give your family and guests the protection and cheer of better light in your home.



NEW ORLEANS **Public Service**





Through fall's leafless trees, the Young Men's Christian Association building at Mississippi State can be seen.

**Nunn Bush  
SHOES**



**FOOT  
COMFORT**



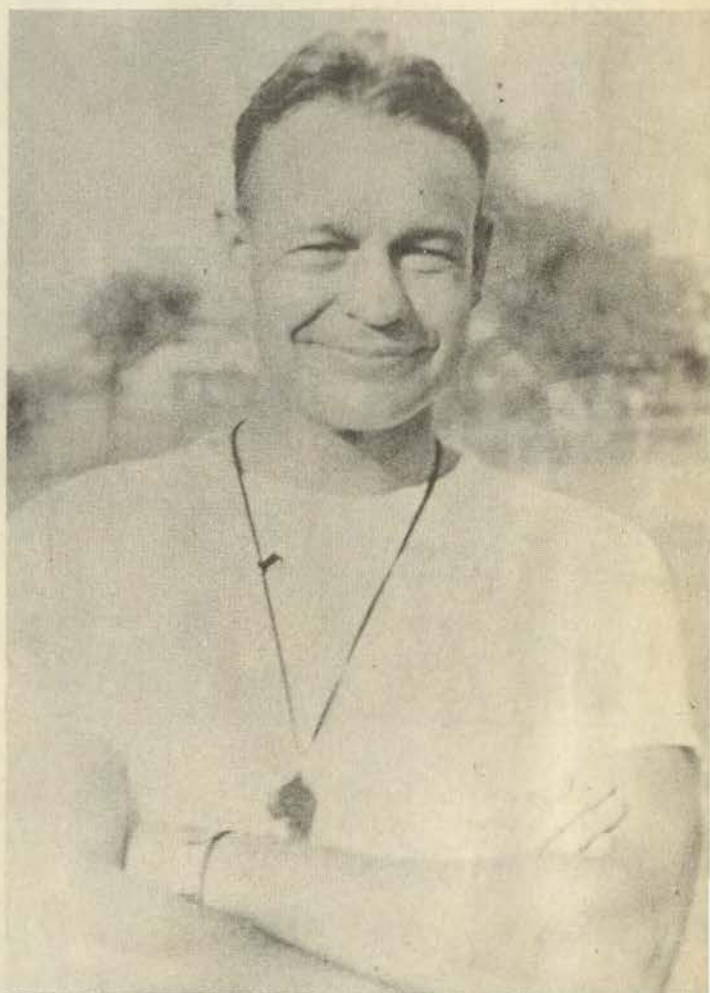
**MILES OF WEAR**

*at*  
**Porter's**





C. R. "DUDY" NOBLE  
athletic director for Mississippi  
State's Maroons.



ALLYN McKEEN  
head coach for the Maroons.

Good Grooming  
**A-HEAD**



with  
**STYLEPARK HATS**  
from Porter's





Magruder Hall for men is one of the newest residences for students at Mississippi State.

**Nunn Bush  
SHOES**



FOOT  
COMFORT



MILES OF WEAR

at  
**Porter's**



Magruder Hall for men is one of the newest residences for students at Mississippi State.



This air conditioned grill and book store is the in-between-class meeting place for students at Mississippi State.



keep dry on WETTEST DAYS

RAINFAIR STORMCOATS



from  
Porter's



# Ellis F. Robert, Inc.

*formerly* BROADMOOR NURSERY

NURSERY

FLORIST

LANDSCAPING

GENERAL

HOUSE

REPAIRS



*for*

COMPLETE HOME MAINTENANCE

Phone Ra. 9104



where good things  
need not be expensive  
... and inexpensive  
things have to be good



105 YEARS OF FINE APPAREL FOR  
MEN, WOMEN AND CHILDREN

**Godchaux's**

**A WINNER!**





# PIGSKIN ROUNDUP

**NAVY vs. NOTRE DAME**—A classic for both, and Navy probably will end up at the "foot of the class-ic".

\* \* \*

**DUKE vs. GEORGIA TECH**—A battle of bowl-bidders yet. But here the Jackets are outbid.

\* \* \*

**ALABAMA vs. KENTUCKY**—Frankie and Harry in another victory lullaby duet.

\* \* \*

**ARMY vs. VILLANOVA**—The Army and is there an adding machine in the house?

\* \* \*

**FLORIDA vs. AUBURN**—A battle of "so-so" clubs. The 'Gators will be a little less "so-so" after this.

\* \* \*

**GEORGIA vs. CHATTANOOGA**—Trippi at last finds a team he can "trip-pi" all alone.

\* \* \*

**MINNESOTA vs. MICHIGAN**—The \$64 question: "Can the Gophers rebound?" The answer: "Yes", but weakly.

**OLE MISS vs. L. S. U.**—Humph. More fresh meat for the Bengals.

\* \* \*

**NORTHWESTERN vs. OHIO STATE**—The Buckeyes opened a few eyes last week. A few more should pop this go-round.

\* \* \*

**TEXAS vs. S. M. U.**—The choicest beef from the Southwest meets in a game that may have the conference diadem at stake. Both should be on the bounce, but the Longhorns should bounce higher.

\* \* \*

**TEXAS A. and M. vs. ARKANSAS**—The Razor-backs, "conferencely" speaking, are down. They'll take the "10-count" this week.

\* \* \*

**PITTSBURGH vs. PURDUE**—Whoops! More woe for Shaughnessy.

\* \* \*

The left "overs"—Penn over Princeton . . . T. C. U. over Oklahoma . . . Rice over Texas Tech . . . St. Mary's over Southern Cal . . . California over Washington State . . . Yale over Dartmouth . . . Wisconsin over Iowa . . . Kansas over Nebraska.  
(Andy Rogers)

*Official timing watch for the*



**TULANE-MISS. STATE FOOTBALL GAME**

*Longines*

*The World's Most Honored Watch*  
*winner of 10 world's fair grand prizes,*  
*28 gold medals, and more honors for*  
*accuracy than any other timepiece*



*Product of Longines-Wittnauer Watch Co.*



# *The Roosevelt*

*The Roosevelt Hotel Offers*  
*New Orleans' Most Diversified Program*  
*of*  
*Music and Entertainment*

**in the FOUNTAIN LOUNGE**

At LUNCHEON we invite you to listen to the sweet strains of the Gypsy Ensemble. For COCKTAILS and DANCING, alternately nightly from five o'clock until two the next morning is one of Latin America's noted Rhumba bands and the Society Music of one of America's outstanding combinations.

**in the BLUE ROOM**

Each evening, for DINNER and SUPPER DANCING, is presented one of the Nation's famous orchestras . . . Featured also in the Blue Room Floor Shows at Dinner and Supper, are celebrated stars from radio, stage and screen.

*New Orleans' most discriminating audiences choose the Roosevelt  
for their relaxation and entertainment*



*The Roosevelt*  
*"The Pride of the South"*



# Mississippi State



CAPTAIN  
BILLY  
HILDEBRAND  
END



HAL FRANCE  
QUARTERBACK



TOM BURRESS  
END



BOB  
CADENHEAD  
CENTER



HARPER DAVIS.....LEFT HALF



MUTT  
FLOYD  
QUARTERBACK



MIKE  
KERBY  
TACKLE



W.D. GARRETT, ... TACKLE



LLOYD McDOUGAL, TACKLE ♦ BOBBY JEFFREYS, CENTER ♦ BILLY HOWARD, END



## THE SCHEDULES

### TULANE

October 6—Tulane 6, Florida 6  
 October 13—Tulane 7, Rice 13  
 October 20—Tulane 14, Auburn 20  
 October 27—Tulane 19, S. M. U. 7  
 November 3—Mississippi State at New Orleans  
 November 10—Georgia Tech at New Orleans  
 November 17—Clemson at New Orleans  
 November 24—Notre Dame at New Orleans  
 December 1—L. S. U. at New Orleans



### MISSISSIPPI STATE

September 29—Miss. State 31, S. L. I. 0  
 October 6—Miss State 20, Auburn 0  
 October 13—Miss. State 41, Detroit 6  
 October 20—Miss. State 16, Maxwell Field 6  
 November 3—Tulane at New Orleans  
 November 10—L. S. U. at Baton Rouge  
 November 17—Northwestern State (La.)  
 at Starkville  
 November 24—Ole Miss at Starkville  
 December 1—Alabama at Tuscaloosa



W.L.  
**Douglas Shoes**  
 W.L. DOUGLAS SHOE CO., BROCKTON 15, MASS.  
 218 ST. CHARLES STREET

## HAUSMANN

NEW ORLEANS'  
 LEADING JEWELERS



Special Department for College  
 and  
 Fraternal Jewelry

*The Thinking Fellow  
 Rides a Yellow*



TOYE BROS.



YELLOW CABS

W S M B

1350 Kilocycles



NEW ORLEANS' OUTLET FOR  
 THE N B C NETWORK



IF YOU CAN'T ATTEND ALL OF  
 THE TULANE GAMES, LISTEN  
 TO HARRY ARTHUR'S VIVID  
 DESCRIPTION OF THEM  
 ON W S M B.





STANLEY RHOADES  
FULLBACK



JOE SAIA  
GUARD



LOUIS WILLIAMS  
GUARD



MORRIE WOLVERTON  
END

# Mississippi State



DON ROBINSON  
LEFT  
BACK



JAMES  
STUART  
RIGHT HALF



REX BULLOCKS  
CENTER



SAM CARROLL  
TACKLE



GRAHAM BRAMLETT  
FULLBACK



MIKE  
HARRIS  
GUARD



HENRY LOWE  
GUARD



## TULANE ROSTER

No.	Name and Position	Weight	Height	Hometown	Status
10	Ray Arthur, qb	160	5-8	New Orleans, La.	Civ.
11	James Lee, fb	165	5-11	Memphis, Tenn.	Civ.
12	David Rideout, hb	165	5-10	Henderson, Ky.	Civ.
14	Hugh Bowers, c	179	5-10 1/2	Port LaVaca, Tex.	Navy
15	William Leahy, qb	170	6-1	Rensselaer, N. Y.	Navy
16	Harry Levonian, b	165	5-8	Racine, Wis.	Civ.
18	Joe Young, hb	170	5-11	New Orleans, La.	Civ.
19	Larry McDonald, e	172	6-	Struthers, Ohio	Civ.
20	Ernest Crouch, qb	155	5-10	Sulphur, La.	Civ.
21	Jack Seybold, g	185	5-9	New Orleans, La.	Civ.
22	Richard Hoot, hb	180	5-11 1/2	Swarthmore, Pa.	Navy
23	Joe Chavez, hb	172	5-9	Los Angeles, Cal.	Navy
24	Clayton Timken, t	185	6-	New Orleans, La.	Vet.
25	Marvin McCain, qb	193	6-	New Orleans, La.	Civ.
26	David Banowetz, fb	184	5-10	New Orleans, La.	Civ.
27	David Rowland, t	202	6-2	Hot Springs, Ark.	Navy
28	Bill Robertson, fb	175	5-11	Piggott, Ark.	Civ.
29	William Reynolds, hb	175	5-11	Birmingham, Ala.	Navy
30	Tony Cash, e	195	6-1 1/2	New Orleans, La.	Vet.
31	James Lassetter, e	170	6-1 1/2	Whitehaven, Tenn.	Civ.
32	Roy Bailey, e	180	6-	Sulphur, La.	Civ.
33	Jack Counce, hb	183	6-	New Orleans, La.	Civ.
34	Robert Logan, t	195	6-3	Dennison, Iowa	Navy
35	William Woodiel, g	185	6-	Little Rock, Ark.	Civ.
36	George Robinson, t	195	6-	Homer, La.	Vet.
37	William Carter, g	180	5-11	Irrington, N. Y.	Navy
38	Gaston Bourgeois, g	205	5-11 1/2	Lutcher, La.	Civ.
39	Elliott Igleheart, g	200	5-10	Shelbyville, Ky.	Civ.
40	Al Stolen, c	200	6-1	Duluth, Minn.	Vet.
41	John Frank, g	202	5-10	New Orleans, La.	Civ.
42	James Bie, e	170	6-	Racine, Wis.	Civ.
43	Walter Ferguson, t	190	5-11	Okeene, Okla.	Navy
44	Alvin Brinker, g	200	6-	New Orleans, La.	Civ.
45	Leroy Schneider, t	230	6-	Baltimore, Md.	Vet.
49	Harold Terrell, g	197	5-11	Port Arthur, Tex.	Vet.
50	William Watkins, e	185	6-	Helena, Ark.	Navy
58	Robert Shirley, e	185	6-1	Vicksburg, Miss.	Vet.
65	Caver Johnson, t	215	5-11	Atlanta, Tex.	Vet.
80	Vaughn Ellender, e	175	5-11	Sulphur, La.	Civ.
86	Bernard Paxton, t	230	6-3	Birmingham, Ala.	Civ.



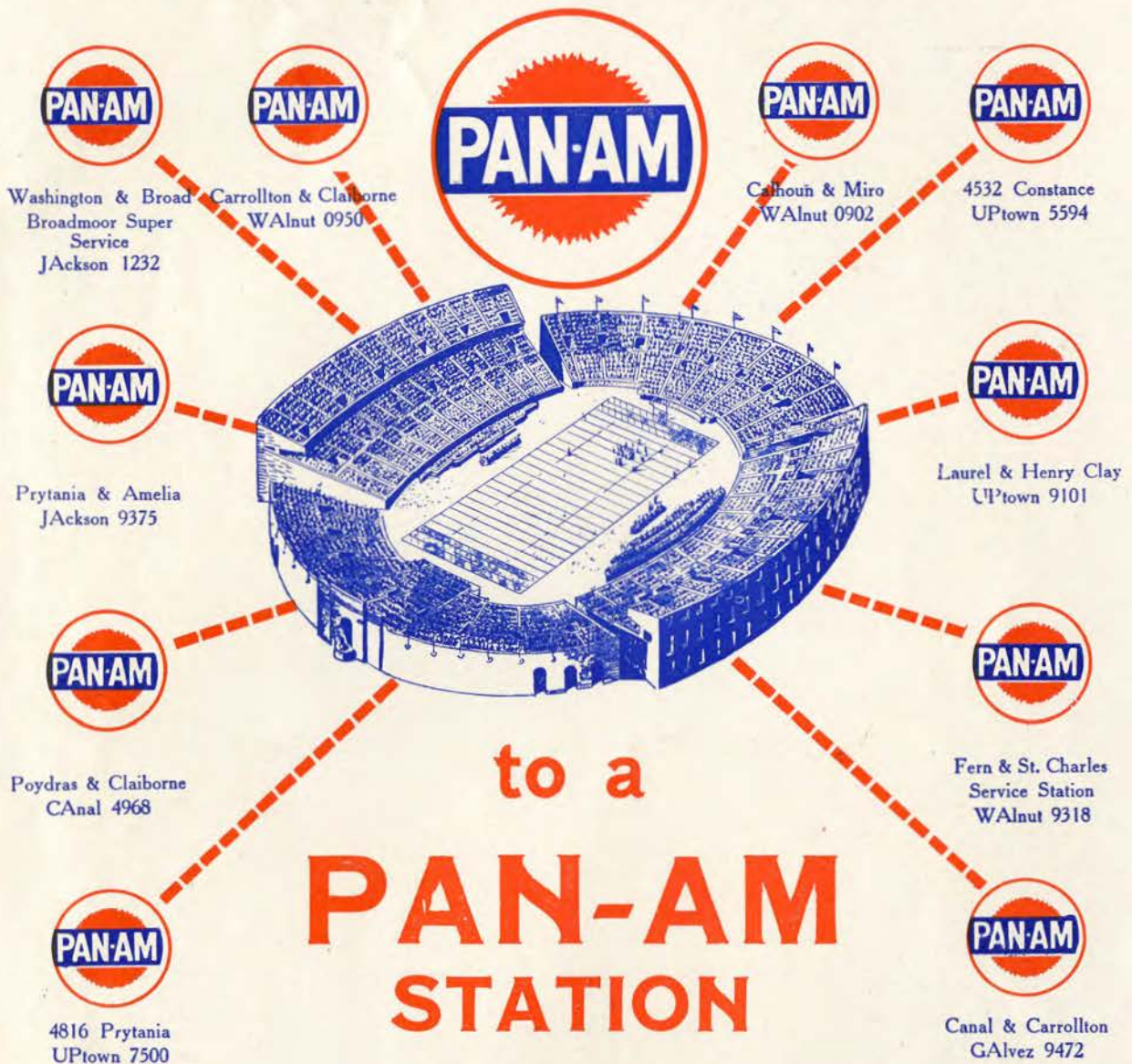
## MISSISSIPPI STATE ROSTER

No.	Name and Position	Weight	Height	Hometown
11	Bennie Ray Nobles, rh	168	5-10	Hattiesburg, Miss.
12	Jim Wall, rh	152	5-10	Noxapater, Miss.
13	James Stuart, rh	168	5-11	Jackson, Miss.
14	James Trammell, rh	177	6-0	Dexter, Mo.
15	George C. McIngvale, rh	170	5-11	Starkville, Miss.
21	Hal France, qb	148	5-8 1/2	Tunica, Miss.
22	Clarence Black, qb	164	5-11 1/2	Marks, Miss.
23	Forest Wallace, qb	166	5-11	Columbus, Miss.
24	D. B. Floyd, qb	182	6-1	Sardis, Miss.
31	Herbie King, fb	166	5-9	Springfield, Ohio
32	Edward McCaleb, fb	176	5-11	Gulfport, Miss.
33	Graham Bramlett, fb	180	6-0	Clarksdale, Miss.
34	Stanley Rhoades, fb	182	5-11	Evansville, Ind.
41	Don Winstead, lh	145	5-8	Jackson, Miss.
43	Harper Davis, lh	170	5-9	Clarksdale, Miss.
44	Don Robinson, lh	171	6-0	Memphis, Tenn.
51	Rex Bullock, e	184	6-2	Tylertown, Miss.
52	W. M. Miley, e	165	5-10 1/2	Newton, Miss.
53	Bobby Jeffreys, e	177	6-2	Memphis, Tenn.
54	C. R. Cadenhead, e	198	6-0	Greenville, Miss.
61	John Matthews, g	172	6-0	Tunica, Miss.
62	J. E. McCracken, g	170	5-10	Jonesboro, Ark.
64	Louis Williams, g	170	5-8 1/2	Memphis, Tenn.
65	Joe Sain, g	202	5-10 1/2	Shaw, Miss.
66	Henry Lowe, g	184	6-1	Helena, Ark.
67	Mike Harris, g	212	6-0	Birmingham, Ala.
68	Fred Morganti, g	210	5-9	Clarksdale, Miss.
71	Wayne Hegwood, t	202	6-0	Jackson, Miss.
72	S. B. Martin, t	184	6-0	Jackson, Miss.
74	Sam Stewart, t	190	6-3	Memphis, Tenn.
75	Mike Kerby, t	184	5-8	Columbus, Miss.
76	W. D. Garrett, t	214	6-1	Tunica, Miss.
77	S. J. Carroll, t	215	6-2	Greenville, Miss.
78	Lloyd McDougal, t	202	6-3	Tishomingo, Miss.
81	Robert Williams, e	174	5-11	Jackson, Miss.
82	J. E. Forrester, e	155	6-0	Memphis, Tenn.
84	Ray Smith, e	185	6-1	Cleveland, Miss.
85	M. L. Welverton, e	174	5-11	Springfield, Ohio
86	C. W. Hildebrand, e	183	6-0	Memphis, Tenn.
87	Billy Howard, e	184	6-2	Laurel, Miss.
88	M. T. Burruss, e	178	5-11 1/2	Jonesboro, Ark.

The Official Watch for Timing All Tulane Games is a Longines—"The World's Most Honored Watch"



only a few yards to go . . .



(Other Pan-Am Stations conveniently located  
in all parts of the City.)





**Lucky Man . . .** Pretty date,  
two good seats, and clothes from  
**The Men's Store of**  
**D. H. HOLMES CO., LTD.**